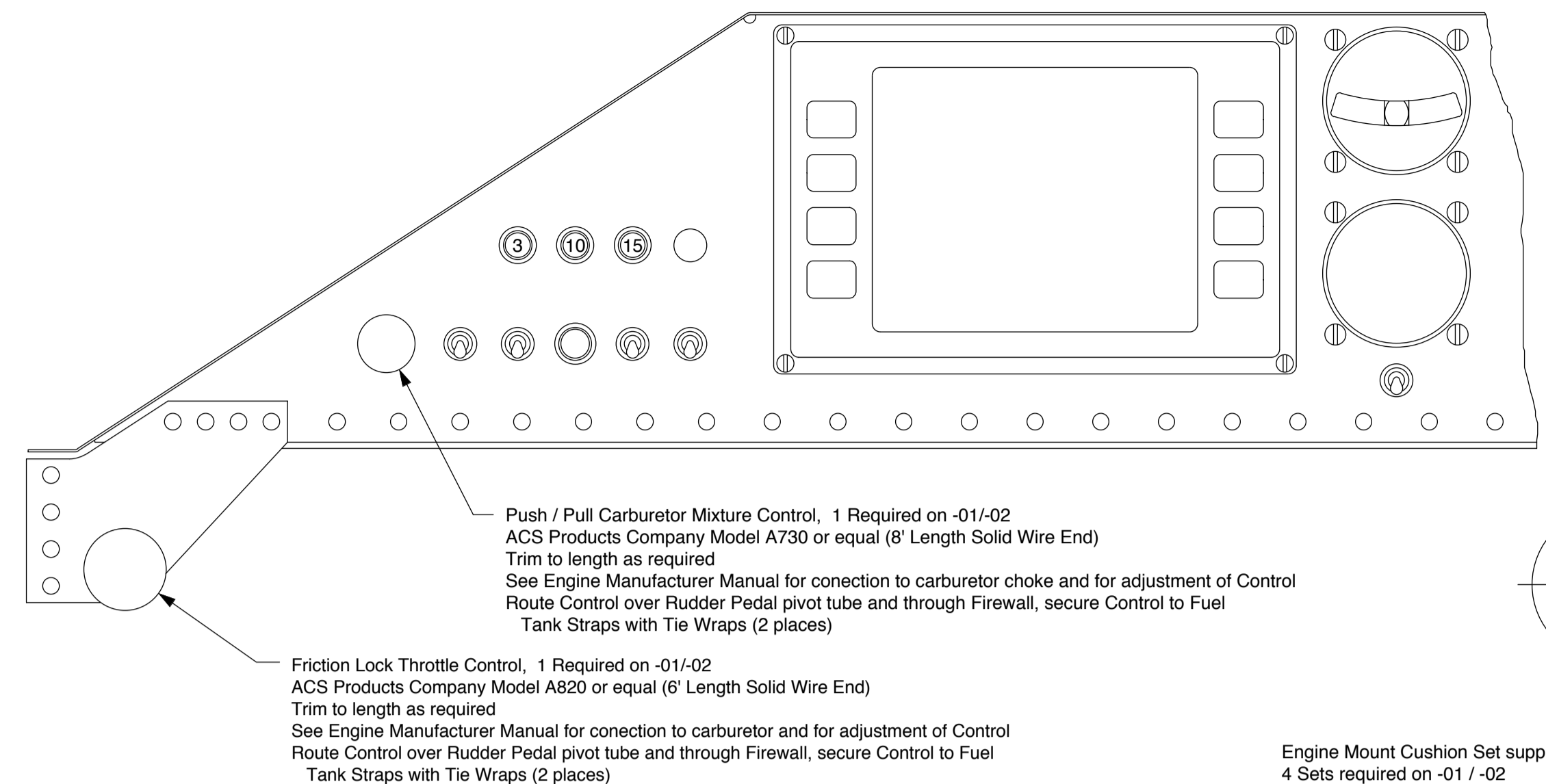


The information disclosed herein is the property of the originator who reserves all patent, design, proprietary, manufacturing, use and sales rights thereto, except for the rights expressly granted to others. This document shall not be reproduced nor shall the information contained within be used by or disclosed to others except as expressly authorized by the originator.

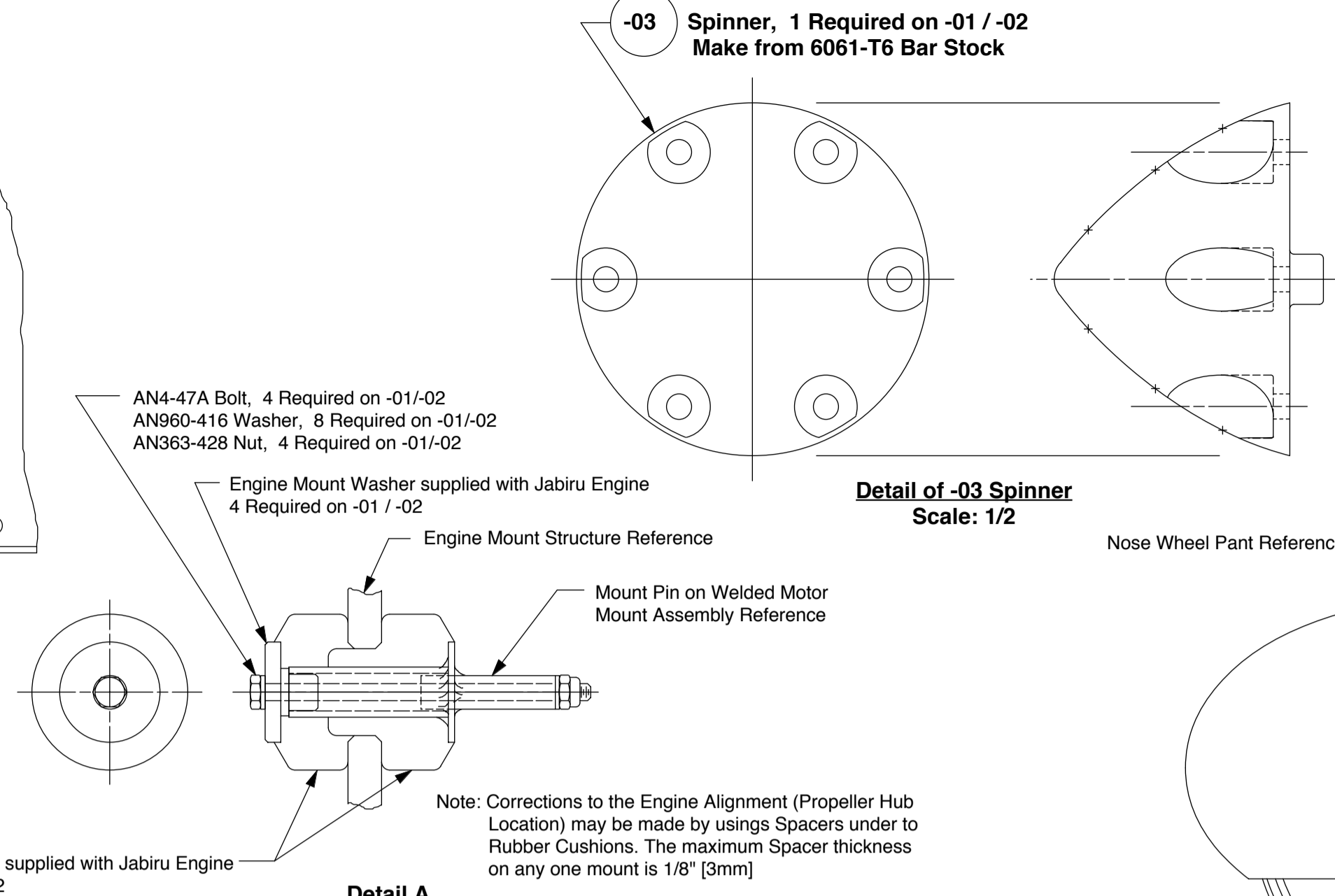
Revision Letter	Change Description
A	Added -04 Fin Installation for Jabiru 3300 powered Tri-Gear Aircraft, Added -05 Fin & -06 Angles Revised 9/30/99
B	Added View for Carb Heat Installation and revised requirement callout for Carb Heat Revised 11/15/03



View B-B
Detail of Instrument Panel and Controls
Scale: 1/2

Push / Pull Carburetor Mixture Control, 1 Required on -01/-02
ACS Products Company Model A730 or equal (8' Length Solid Wire End)
Trim to length as required
See Engine Manufacturer Manual for connection to carburetor choke and for adjustment of Control
Route Control over Rudder Pedal pivot tube and through Firewall, secure Control to Fuel Tank Straps with Tie Wraps (2 places)

Friction Lock Throttle Control, 1 Required on -01/-02
ACS Products Company Model A820 or equal (6' Length Solid Wire End)
Trim to length as required
See Engine Manufacturer Manual for connection to carburetor and for adjustment of Control
Route Control over Rudder Pedal pivot tube and through Firewall, secure Control to Fuel Tank Straps with Tie Wraps (2 places)



Detail A
Detail of Engine Mount Cushions & Bolts
Typical 4 Locations
Scale: 1/2

-03 Spinner, 1 Required on -01 / -02
Make from 6061-T6 Bar Stock

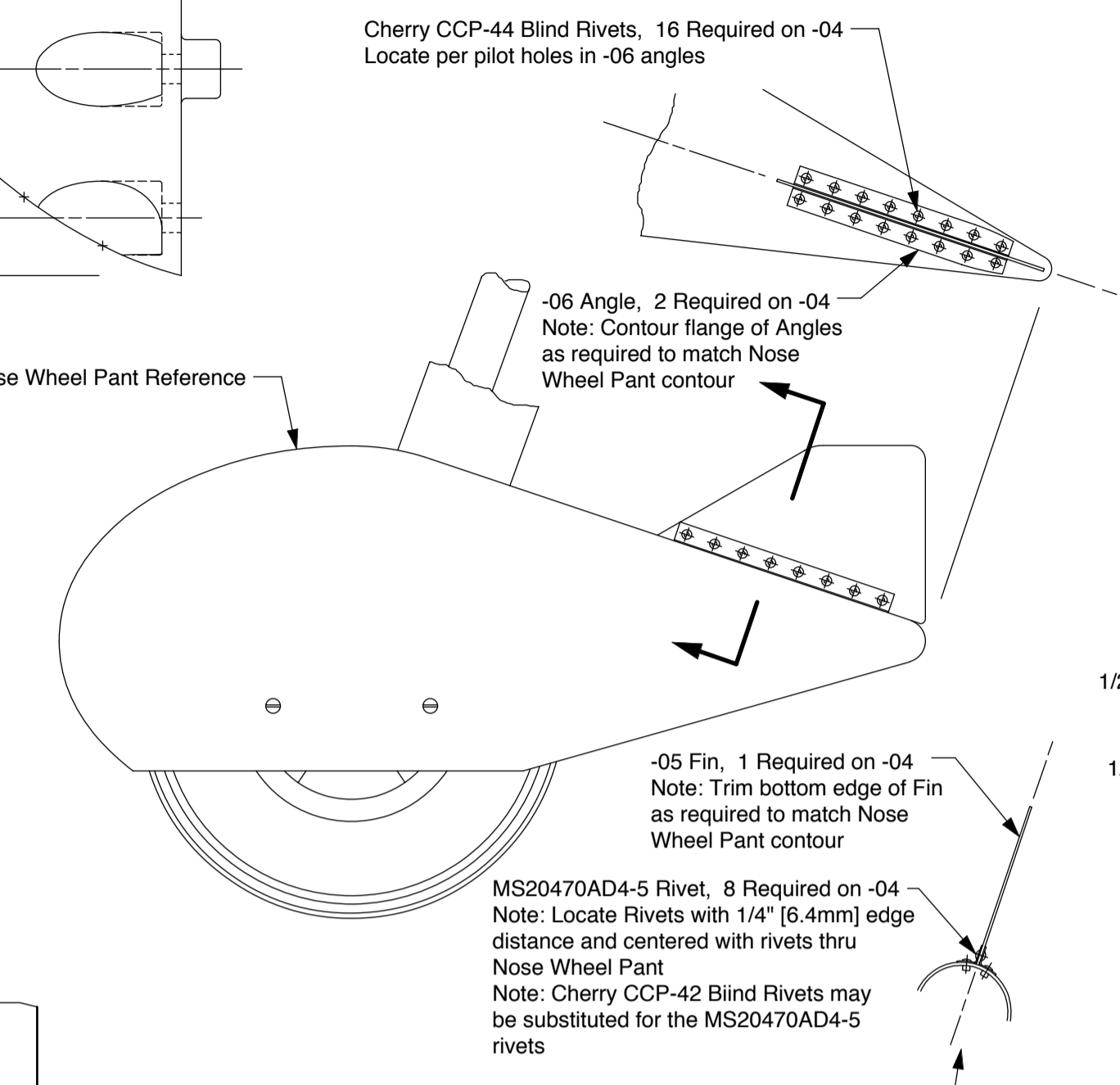
AN4-47A Bolt, 4 Required on -01/-02
AN960-416 Washer, 8 Required on -01/-02
AN363-428 Nut, 4 Required on -01/-02

Engine Mount Washer supplied with Jabiru Engine
4 Required on -01 / -02

Engine Mount Structure Reference
Mount Pin on Welded Motor Mount Assembly Reference

Note: Corrections to the Engine Alignment (Propeller Hub Location) may be made by using Spacers under to Rubber Cushions. The maximum Spacer thickness on any one mount is 1/8" [3mm]

Engine Mount Cushion Set supplied with Jabiru Engine
4 Sets required on -01 / -02



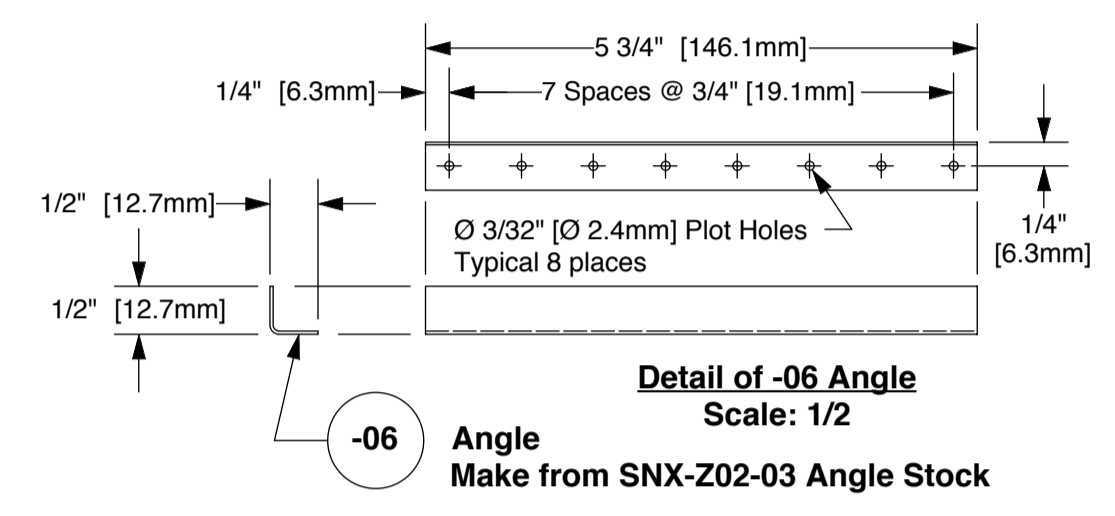
Detail of -04 Fin Installation
Scale: 1/4

Cherry CCP-44 Blind Rivets, 16 Required on -04
Locate per pilot holes in -06 angles

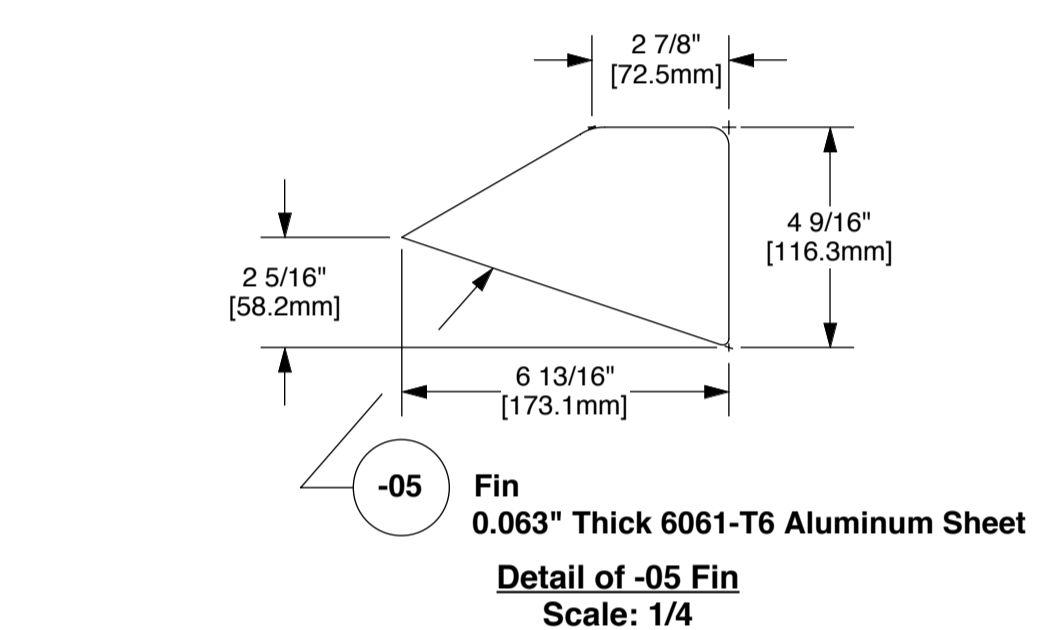
-06 Angle, 2 Required on -04
Note: Contour flange of Angles as required to match Nose Wheel Pant contour

-05 Fin, 1 Required on -04
Note: Trim bottom edge of Fin as required to match Nose Wheel Pant contour

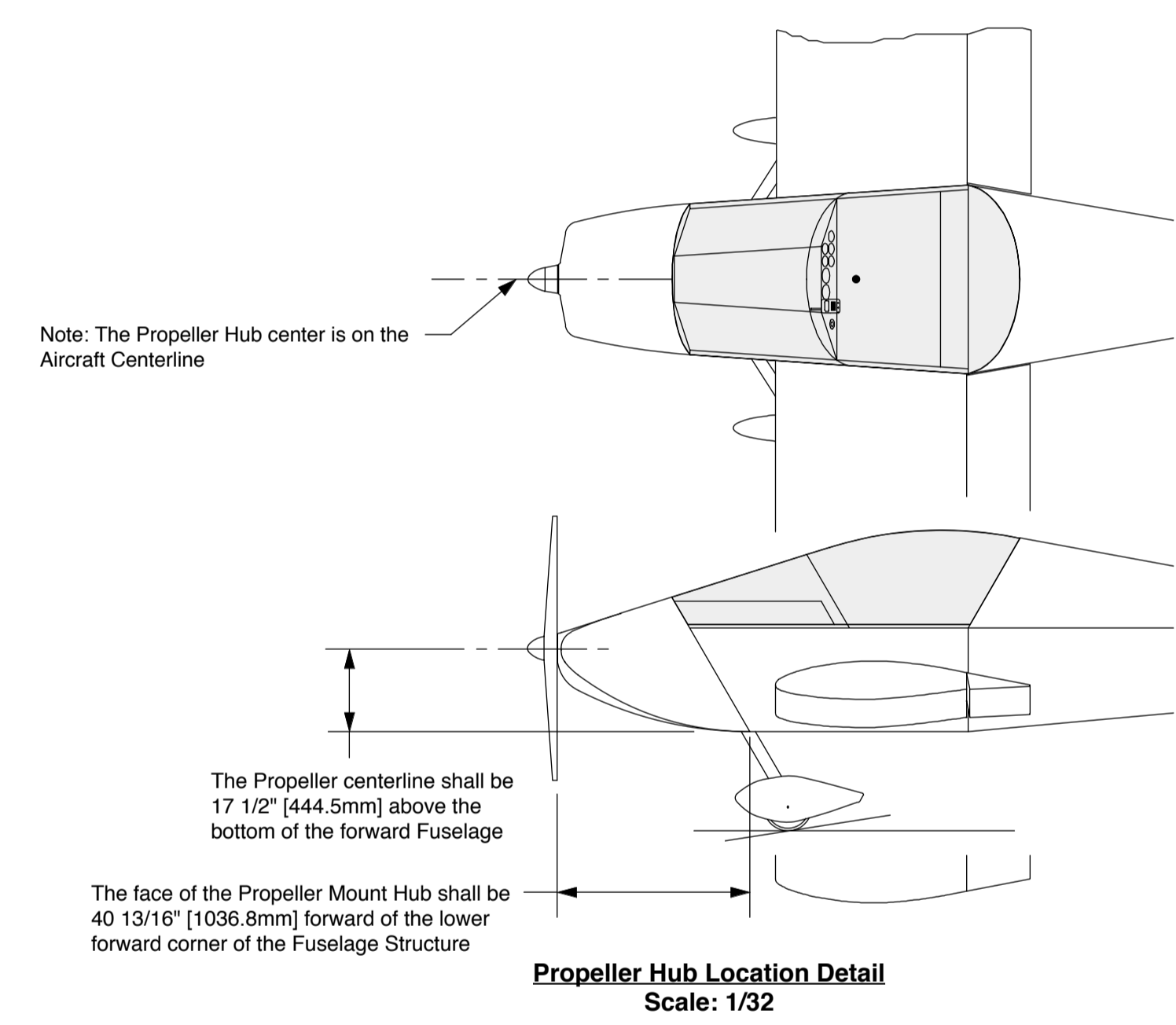
MS20470AD4-5 Rivet, 8 Required on -04
Note: Locate Rivets with 1/4" [6.4mm] edge distance and centered with rivets thru Nose Wheel Pant
Note: Cherry CCP-42 Blind Rivets may be substituted for the MS20470AD4-5 rivets



Detail of -06 Angle
Scale: 1/2



Detail of -05 Fin
Scale: 1/4

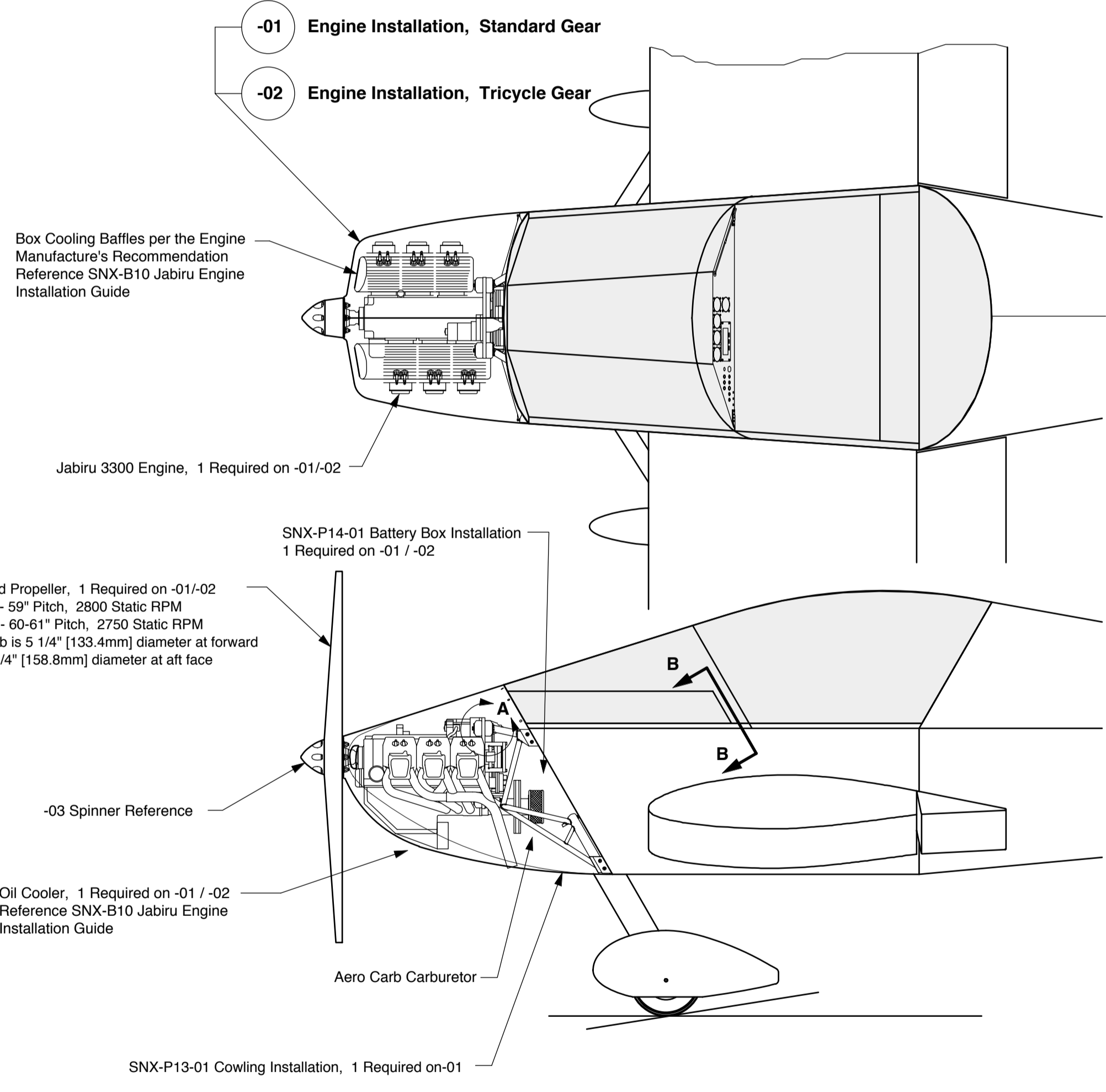


Propeller Hub Location Detail
Scale: 1/32

Note: The Propeller Hub center is on the Aircraft Centerline

The Propeller centerline shall be 17 1/2" [444.5mm] above the bottom of the forward Fuselage

The face of the Propeller Mount Hub shall be 40 13/16" [1036.8mm] forward of the lower forward corner of the Fuselage Structure



Box Cooling Baffles per the Engine Manufacture's Recommendation
Reference SNX-B10 Jabiru Engine Installation Guide

Jabiru 3300 Engine, 1 Required on -01/-02

SNX-P14-01 Battery Box Installation
1 Required on -01 / -02

54" Diameter Wood Propeller, 1 Required on -01/-02
Climb Propeller - 59" Pitch, 2800 Static RPM
Cruise Propeller - 60-61" Pitch, 2750 Static RPM
Note: Propeller Hub is 5 1/4" [133.4mm] diameter at forward face and 6 1/4" [158.8mm] diameter at aft face

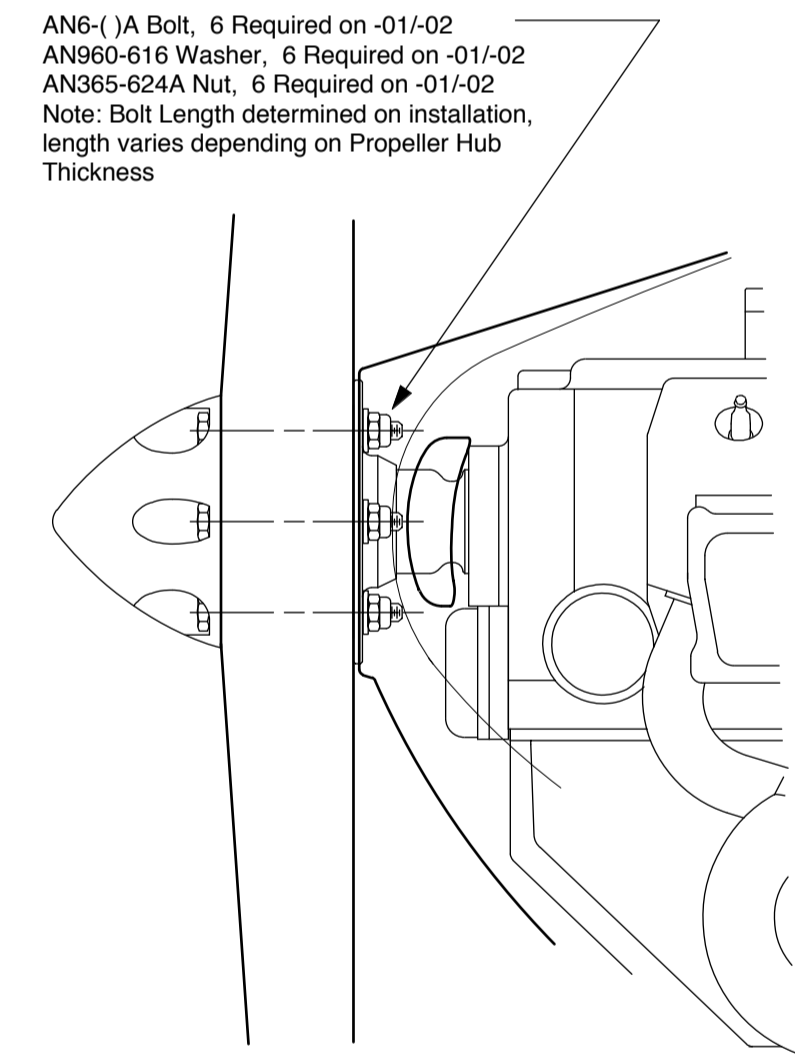
-03 Spinner Reference

Oil Cooler, 1 Required on -01 / -02
Reference SNX-B10 Jabiru Engine Installation Guide

Aero Carb Carburetor

SNX-P13-01 Cowling Installation, 1 Required on-01

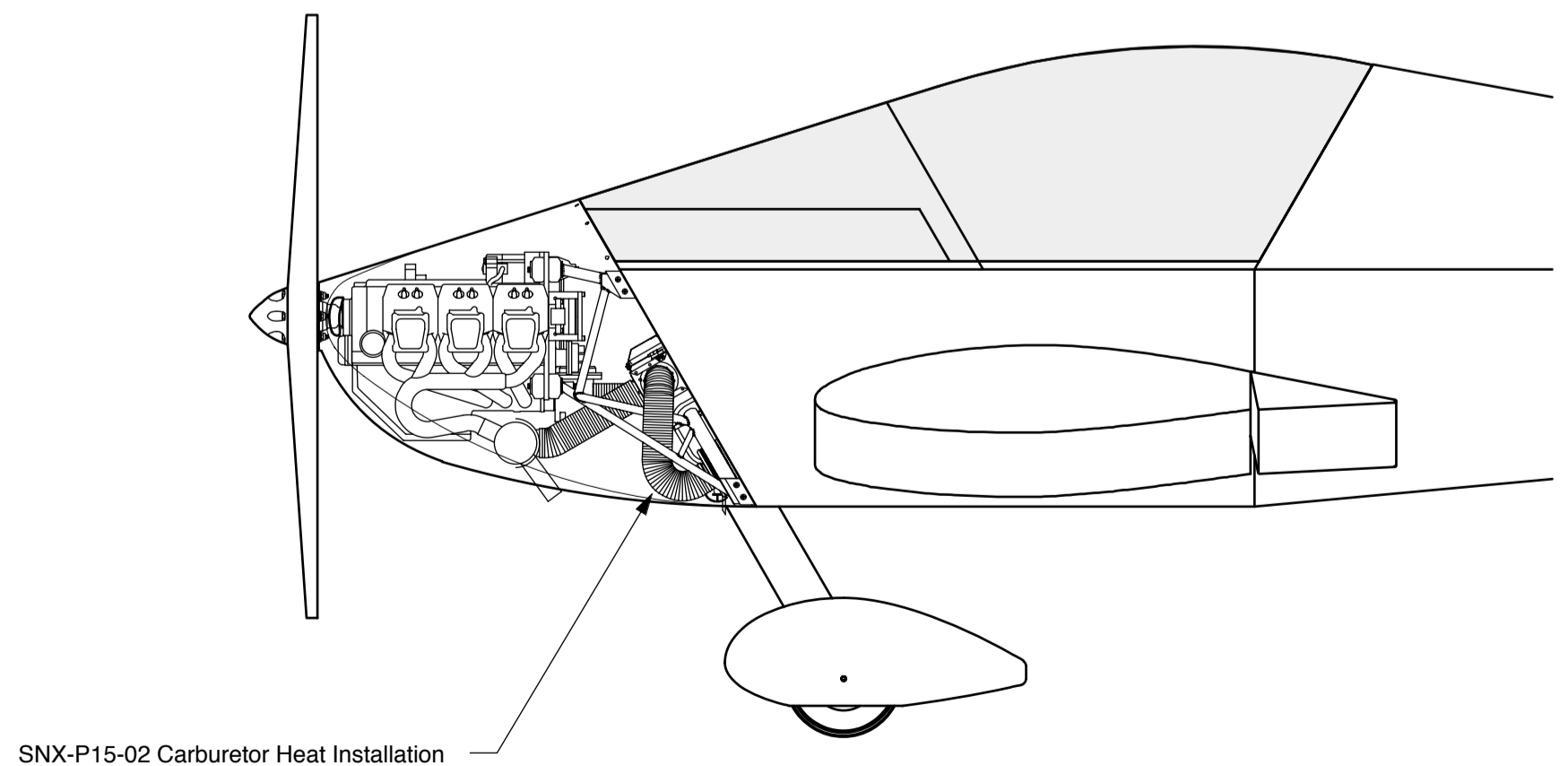
SNX-P13-04 Cowling Installation, 1 Required on-02



-01 Engine Installation, Standard Gear

-02 Engine Installation, Tricycle Gear

AN6-1JA Bolt, 6 Required on -01/-02
AN960-616 Washer, 6 Required on -01/-02
AN365-624A Nut, 6 Required on -01/-02
Note: Bolt Length determined on installation, length varies depending on Propeller Hub Thickness



SNX-P15-02 Carburetor Heat Installation
Optional Requirement

Note: The Design of the Aero Carb which is part of the AeroVee Engine Package makes it not susceptible to carburetor icing and therefore minimizing the need for Carb Heat. The Factory Aircraft are flown with the Aero Carb and do not have Carburetor Heat. The individual builder must determine the need for Carb Heat

Note: The Engine Installation shown represents the Factory Airplane installation and may be different due the Engine changes and/or upgrades. Consult the Engine Manual for the proper installation, propeller and accessories

-04	1	Fin Installation	SNX-B04
-02	1	Engine Instl, Jabiru 3300 with Tri-Gear	SNX-P01
-01	1	Engine Instl, Jabiru 3300 with Std Gear	SNX-P01
Dash Number	Quantity Required	Part Title	Next Assembly

sonex
Engine Installation,
Jabiru 3300 - 6 Cylinder Engine

Drawing Scale	Drawing Number	Revision
1/16 & Noted	SNX-P20	B