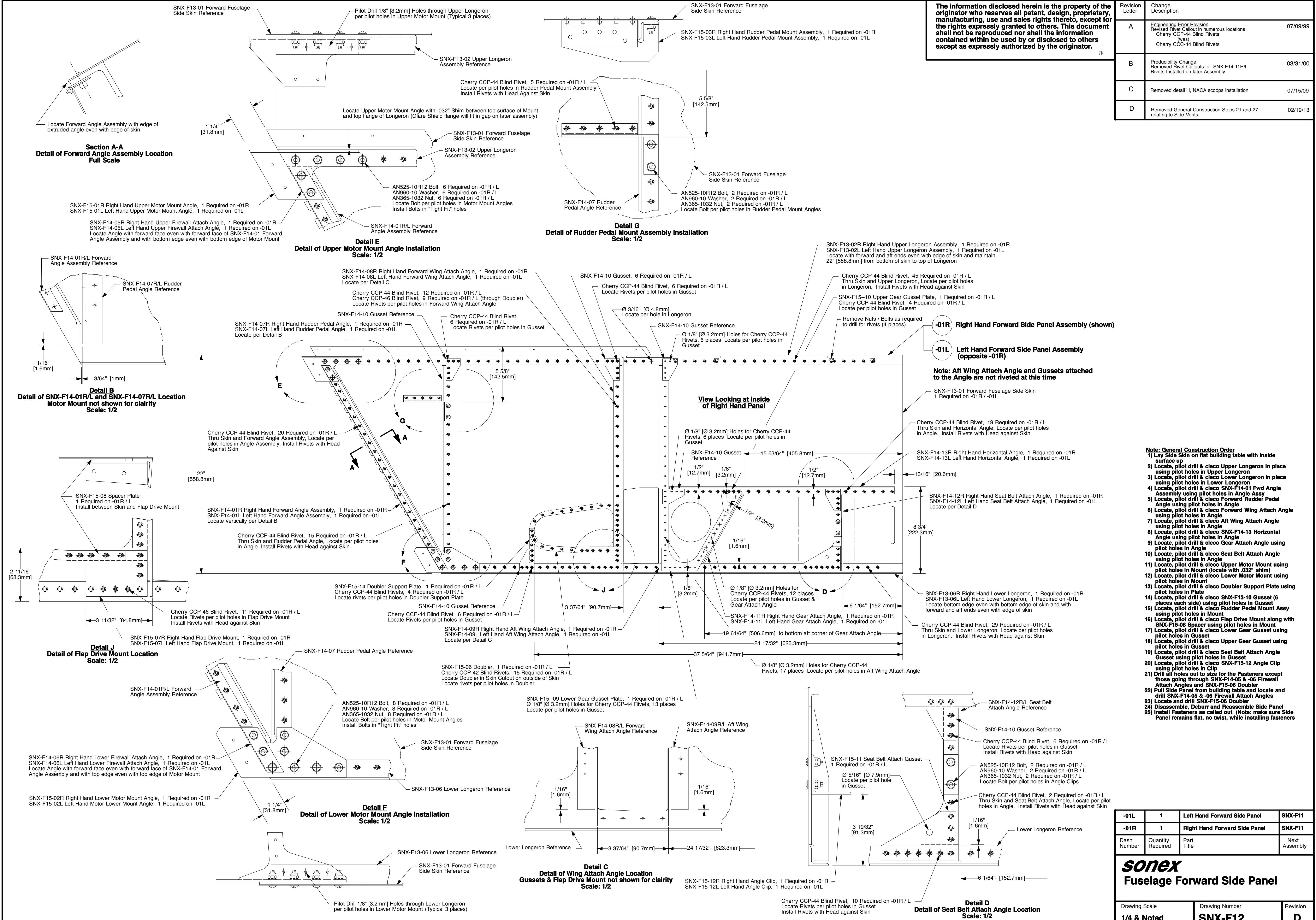


The information disclosed herein is the property of the originator who reserves all patent, design, proprietary, manufacturing, use and sales rights thereto, except for the rights expressly granted to others. This document shall not be reproduced nor shall the information contained within be used by or disclosed to others except as expressly authorized by the originator.

Revision Letter	Change Description	Revision Date
A	Engineering Error Revision Revised Rivet Callout in numerous locations Cherry CCP-44 Blind Rivets (was) Cherry CCC-44 Blind Rivets	07/09/99
B	Productibility Change Removed Rivet Callouts for SNX-F14-11R/L Rivets Installed on later Assembly	03/31/00
C	Removed detail H, NACA scoops installation	07/15/09
D	Removed General Construction Steps 21 and 27 relating to Side Vents.	02/19/13



-01R Right Hand Forward Side Panel Assembly (shown)
-01L Left Hand Forward Side Panel Assembly (opposite -01R)

Note: Aft Wing Attach Angle and Gussets attached to the Angle are not riveted at this time

- Note: General Construction Order**
- 1) Lay Side Skin on flat building table with inside surface up
 - 2) Locate, pilot drill & cleco Upper Longerons in place using pilot holes in Upper Longerons
 - 3) Locate, pilot drill & cleco Lower Longerons in place using pilot holes in Lower Longerons
 - 4) Locate, pilot drill & cleco SNX-F14-01 Fwd Angle Assembly using pilot holes in Angle Assy
 - 5) Locate, pilot drill & cleco Forward Rudder Pedal Angle using pilot holes in Angle
 - 6) Locate, pilot drill & cleco Forward Wing Attach Angle using pilot holes in Angle
 - 7) Locate, pilot drill & cleco Aft Wing Attach Angle using pilot holes in Angle
 - 8) Locate, pilot drill & cleco SNX-F14-13 Horizontal Angle using pilot holes in Angle
 - 9) Locate, pilot drill & cleco Gear Attach Angle using pilot holes in Angle
 - 10) Locate, pilot drill & cleco Seat Belt Attach Angle using pilot holes in Angle
 - 11) Locate, pilot drill & cleco Upper Motor Mount using pilot holes in Mount (locate with .032" shim)
 - 12) Locate, pilot drill & cleco Lower Motor Mount using pilot holes in Mount
 - 13) Locate, pilot drill & cleco Doubler Support Plate using pilot holes in Plate
 - 14) Locate, pilot drill & cleco SNX-F13-10 Gusset (6 places each side) using pilot holes in Gusset
 - 15) Locate, pilot drill & cleco Aft Wing Motor Mount Assy using pilot holes in Mount
 - 16) Locate, pilot drill & cleco Flap Drive Mount along with SNX-F15-08 Spacer using pilot holes in Mount
 - 17) Locate, pilot drill & cleco Lower Gear Gusset using pilot holes in Gusset
 - 18) Locate, pilot drill & cleco Upper Gear Gusset using pilot holes in Gusset
 - 19) Locate, pilot drill & cleco SNX-F15-12 Angle Clip using pilot holes in Clip
 - 20) Drill all holes out to size for the Fasteners except those going through SNX-F14-05 & -06 Firewall Attach Angles and SNX-F15-06 Doubler
 - 21) Pull Side Panel from building table and locate and drill SNX-F14-05 & -06 Firewall Attach Angles
 - 22) Locate and drill SNX-F15-06 Doubler
 - 23) Disassemble, Detour and Reassemble Side Panel
 - 24) Install Fasteners as called out (Note: make sure Side Panel remains flat, no twist, while installing fasteners)

Part Number	Quantity	Part Title	Next Assembly
-01L	1	Left Hand Forward Side Panel	SNX-F11
-01R	1	Right Hand Forward Side Panel	SNX-F11

sonex
Fuselage Forward Side Panel

Drawing Scale	Drawing Number	Revision
1/4 & Noted	SNX-F12	D