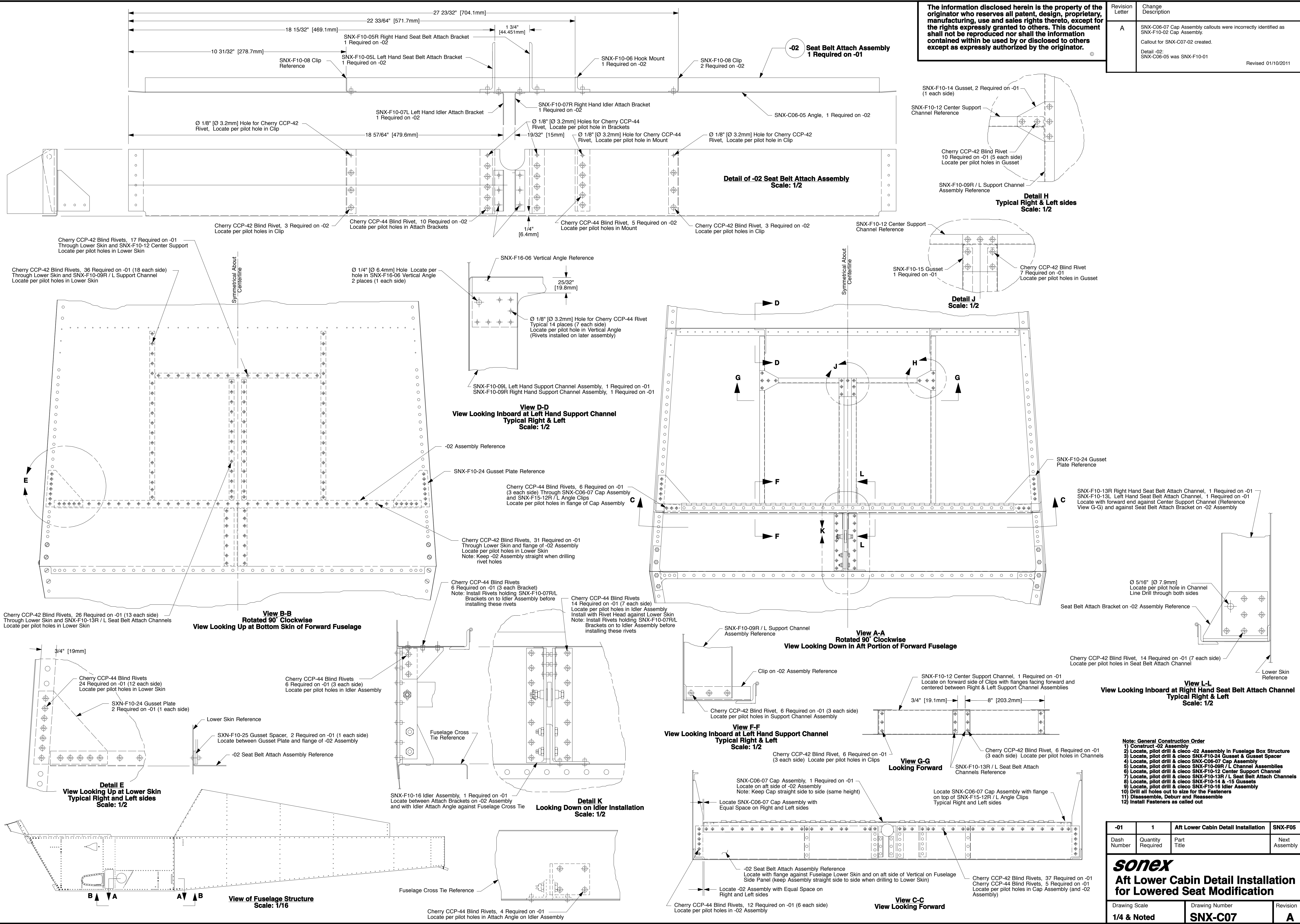


The information disclosed herein is the property of the originator who reserves all patent, design, proprietary, manufacturing, use and sales rights thereto, except for the rights expressly granted to others. This document shall not be reproduced nor shall the information contained within be used by or disclosed to others except as expressly authorized by the originator.

Revision Letter	Change Description
A	SNX-C06-07 Cap Assembly callouts were incorrectly identified as SNX-F10-02 Cap Assembly. Callout for SNX-C07-02 created. Detail -02: SNX-C06-05 was SNX-F10-01
Revised 01/10/2011	



- Note: General Construction Order**
- 1) Construct -02 Assembly
 - 2) Locate, pilot drill & cleco -02 Assembly in Fuselage Box Structure
 - 3) Locate, pilot drill & cleco SNX-F10-24 Gusset & Gusset Spacer
 - 4) Locate, pilot drill & cleco SNX-C06-07 Cap Assembly
 - 5) Locate, pilot drill & cleco SNX-F10-09R / L Channel Assemblies
 - 6) Locate, pilot drill & cleco SNX-F10-12 Center Support Channel
 - 7) Locate, pilot drill & cleco SNX-F10-13R / L Seat Belt Attach Channels
 - 8) Locate, pilot drill & cleco SNX-F10-14 & 15 Gussets
 - 9) Locate, pilot drill & cleco SNX-F10-16 Idler Assembly
 - 10) Drill all holes out to size for the Fasteners
 - 11) Disassemble, Deburr and Reassemble
 - 12) Install Fasteners as called out

-01	1	Aft Lower Cabin Detail Installation	SNX-F05
Dash Number	Quantity Required	Part Title	Next Assembly

sonex

Aft Lower Cabin Detail Installation

for Lower Seat Modification

Drawing Scale 1/4 & Noted	Drawing Number SNX-C07	Revision A
---	----------------------------------	----------------------