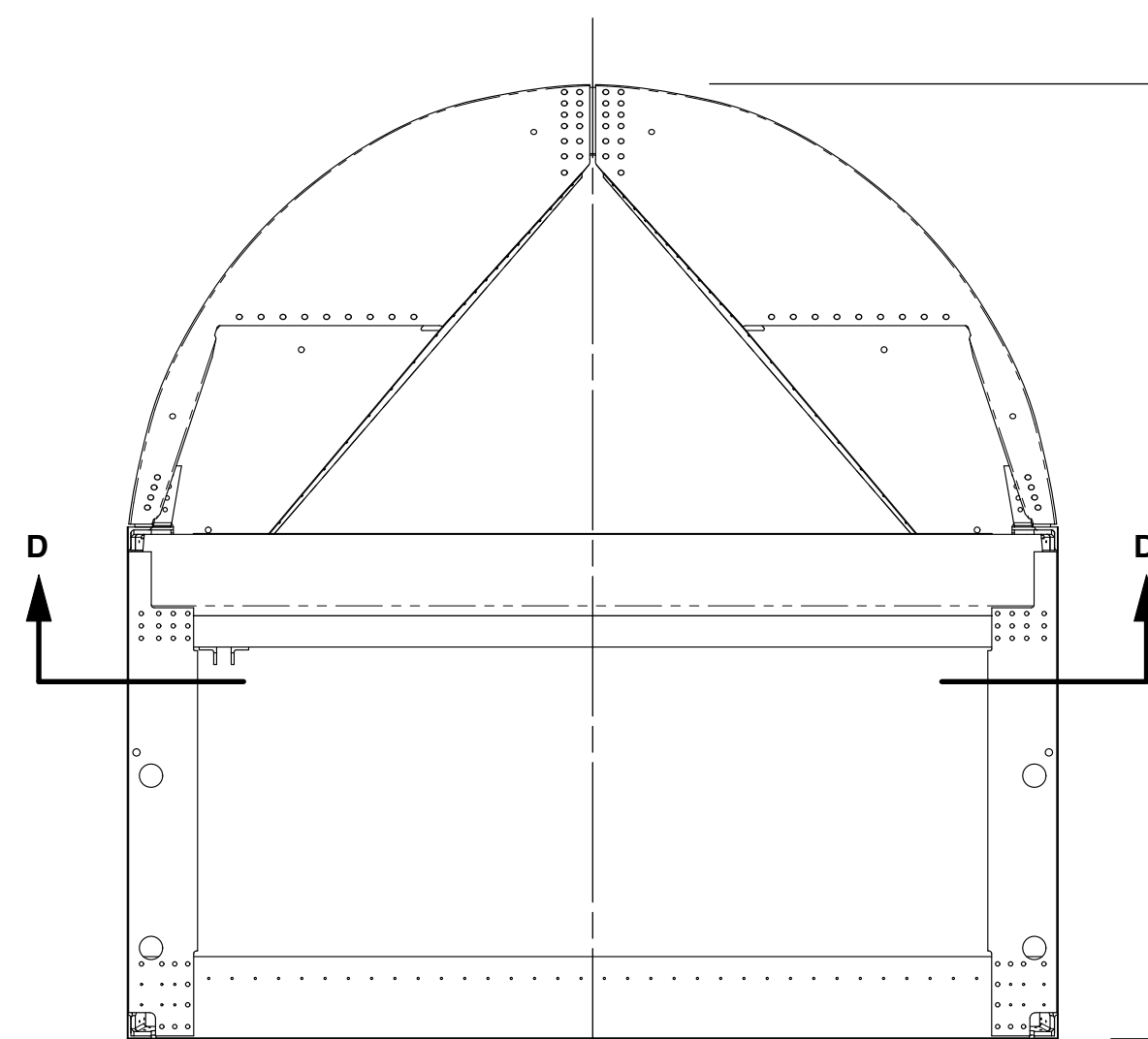


The information disclosed herein is the property of the originator who reserves all patent, design, proprietary, manufacturing, use and sales rights thereto, except for the rights expressly granted to others. This document shall not be reproduced nor shall the information contained within be used by or disclosed to others except as expressly authorized by the originator.

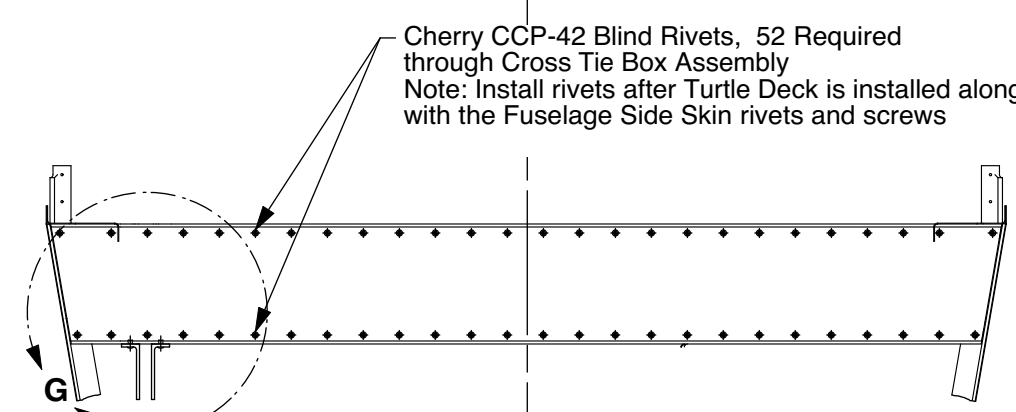
Revision Letter	Change Description	Date
A	Changed AN525-10R12 bolts through splices and forward lower angle mount to AN525-10R11, and added AN960-10 Washers.	08/24/16
B	Changed from SNB-F18-03L/R flap actuator mounts to SNB-F18-03L/R feedback actuator mounts for use with feedback-type actuators equipped with potentiometers.	02/10/21
C	Added Notes to View F-F and Detail G to Back-Rivet Actuator Mounts From Interior of Cross-Tie Box.	02/12/21

AN525-10R11 Bolt, 4 Required (2 per side)  
AN960-10 Washer, 4 Required (2 per side)  
AN365-1032 Nut, 4 Required (2 per side)  
Thru Fuselage Side Skin, Turtle Deck Skin, Longerons and Splice Plate

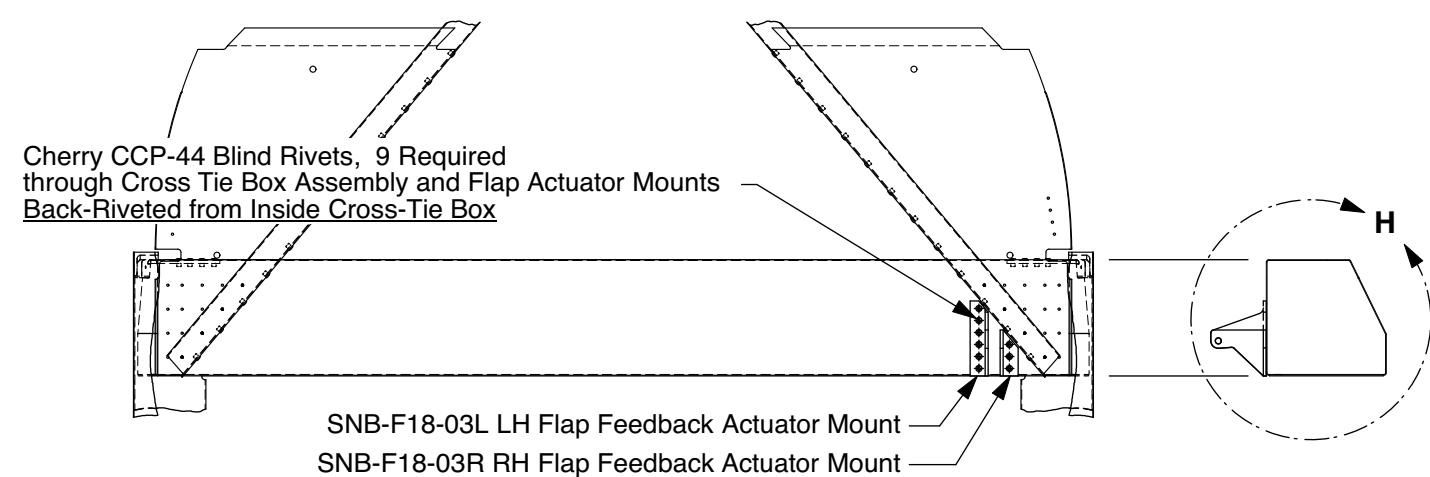
**Detail A**  
Scale: 1/2  
Typical Right and Left Sides



**View D-D**  
View Looking Up at Cross Tie Box  
Reference WXB-F24 and WXB-F21 Drawings



**View F-F**  
View Looking Forward at Cross Tie Box  
Reference WXB-F24 and WXB-F21 Drawings

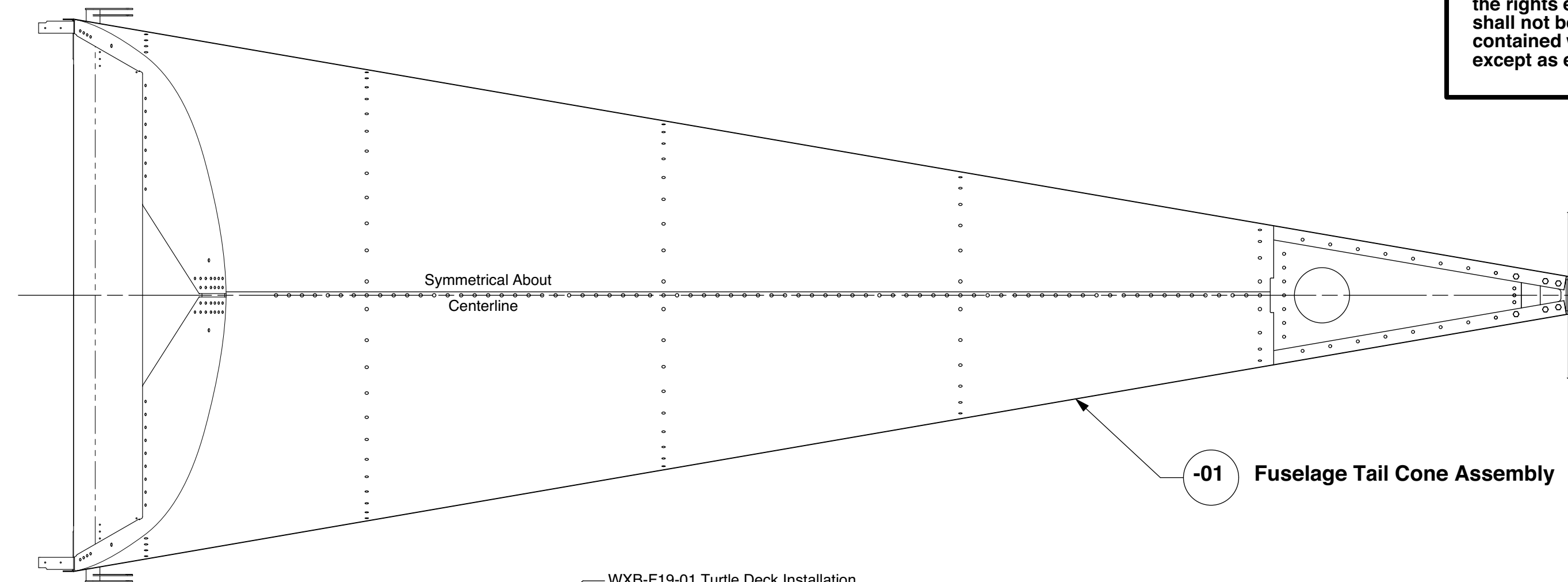


Cherry CCC-42 Blind Rivets, 10 Required  
Note: Rivets through Lower Skin and Mount Beams

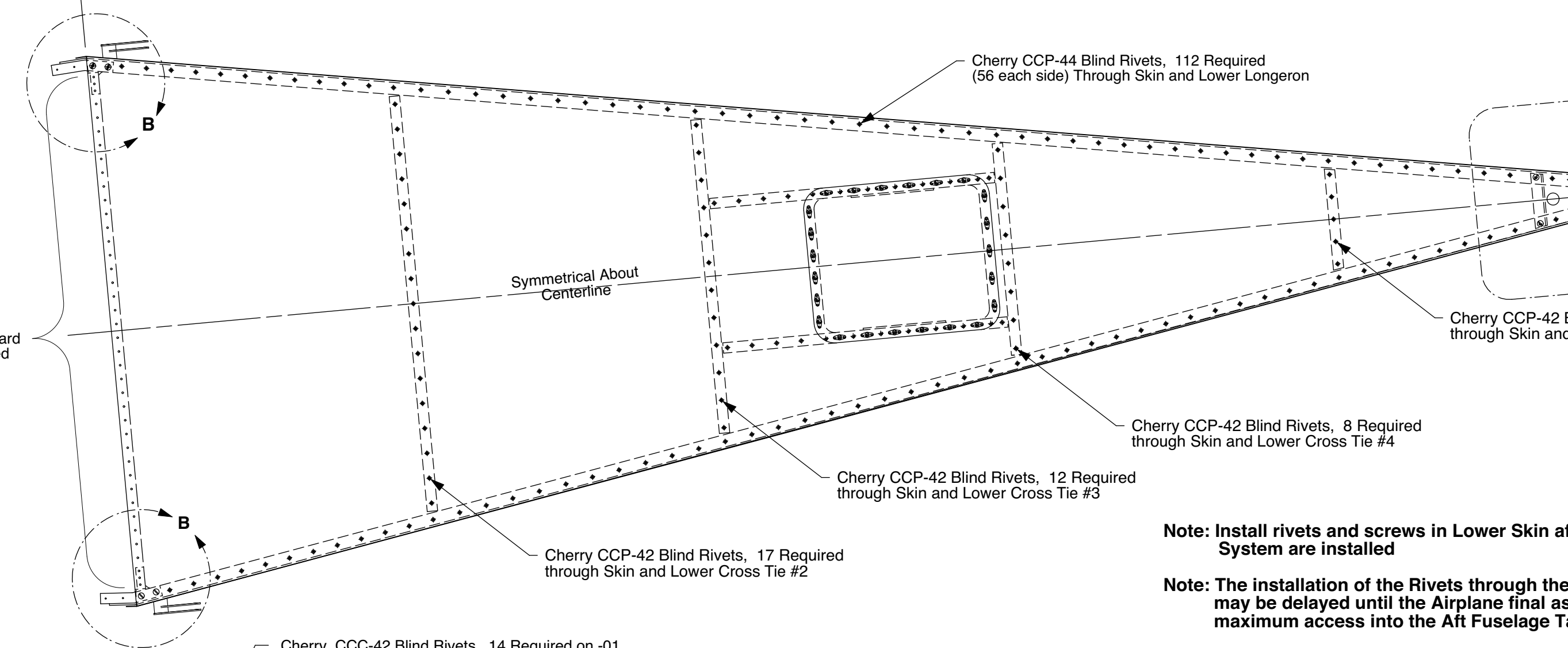
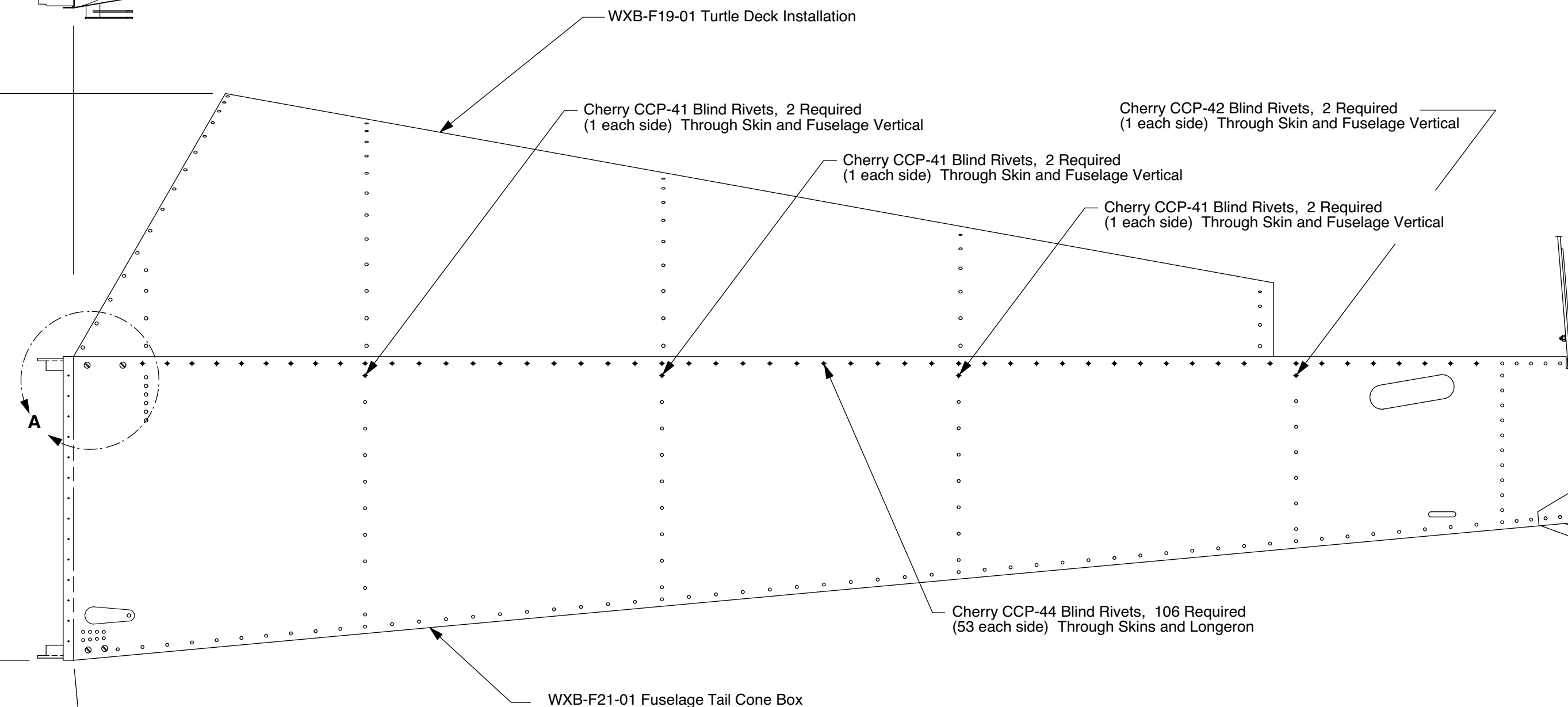
XNS-F22-03 Access Panel Reference

**Detail E**  
View Looking Up at Bottom Access Panel  
Scale 1/4

AN526C-832R6 Machine Screws, 23 Required on -01  
MS21047-08 Anchor Nuts, 23 Required on -01  
Cherry SSC-32 Flush Blind Rivets, 46 Required on -01  
Typical 23 places  
Note: Rivets through Lower Skin and Channel and Anchor Nuts only

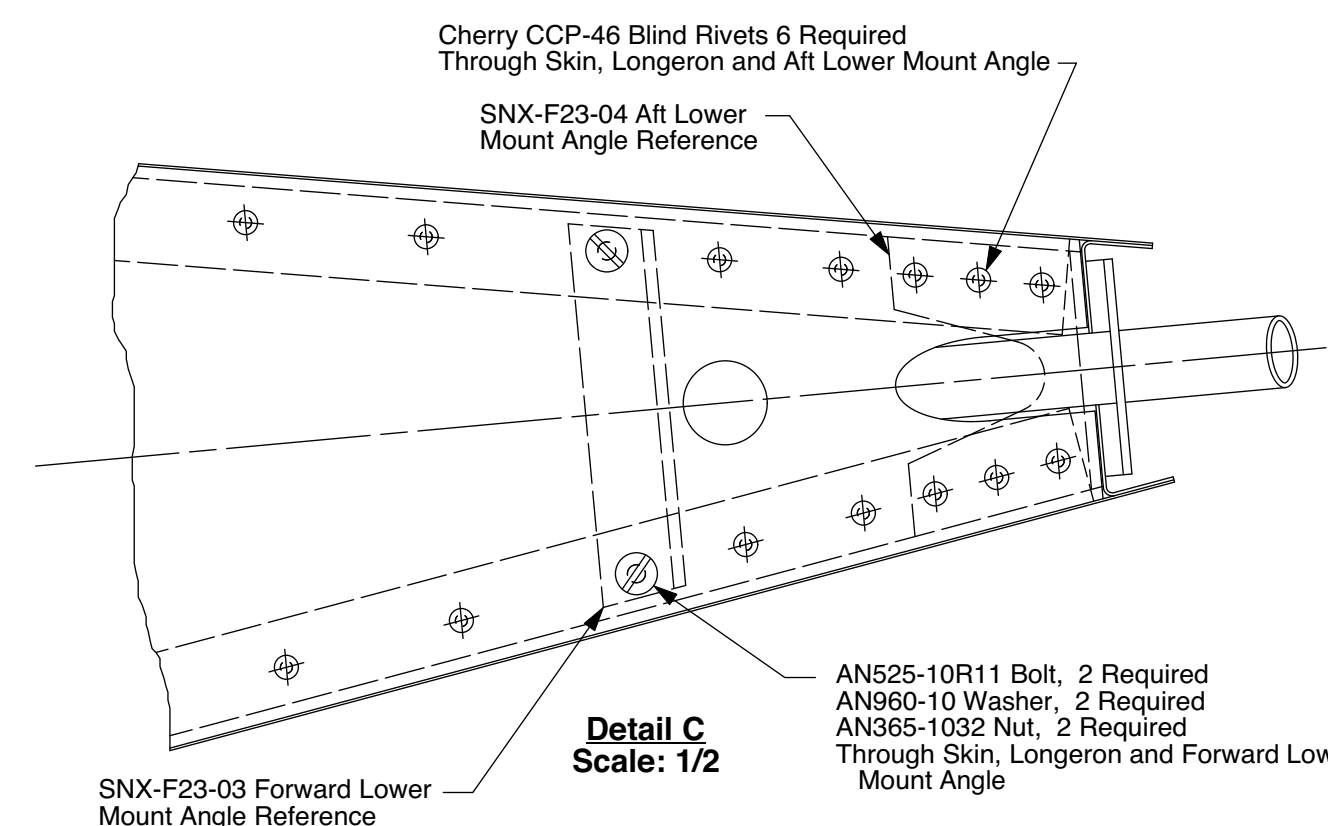


**-01 Fuselage Tail Cone Assembly**



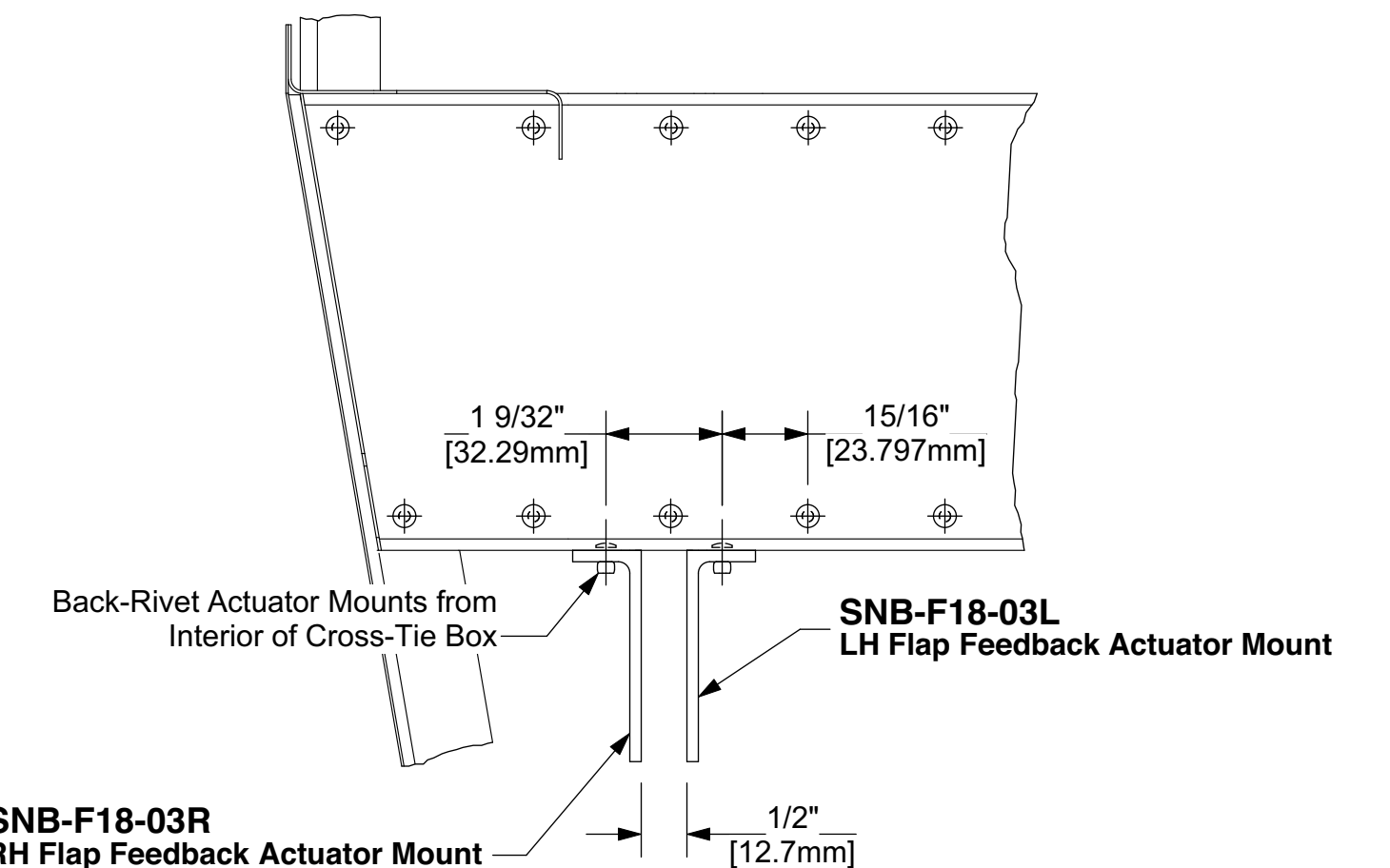
Note: Install rivets and screws in Lower Skin after Turtle Deck and Flap System are installed

Note: The installation of the Rivets through the Lower Aft Fuselage Skin may be delayed until the Airplane final assembly to provide the maximum access into the Aft Fuselage Tail Cone



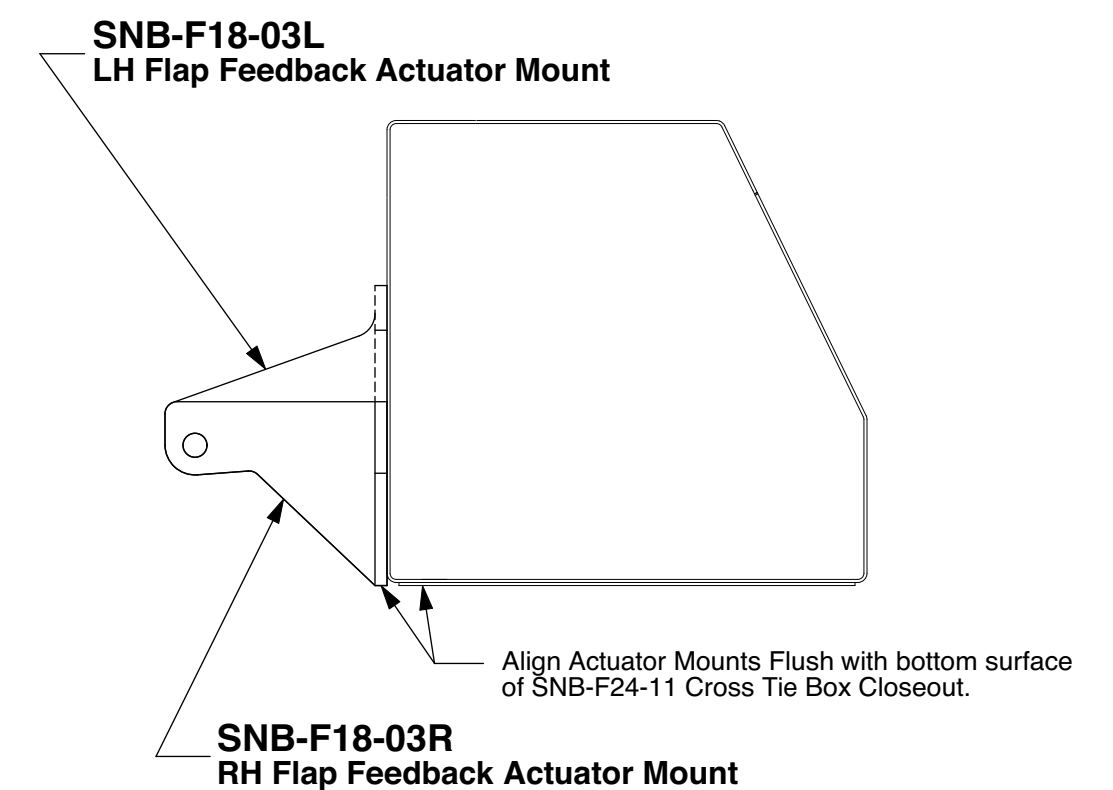
**Detail C**  
Scale: 1/2

AN525-10R11 Bolt, 2 Required  
AN960-10 Washer, 2 Required  
AN365-1032 Nut, 2 Required  
Through Skin, Longerons and Forward Lower Mount Angle

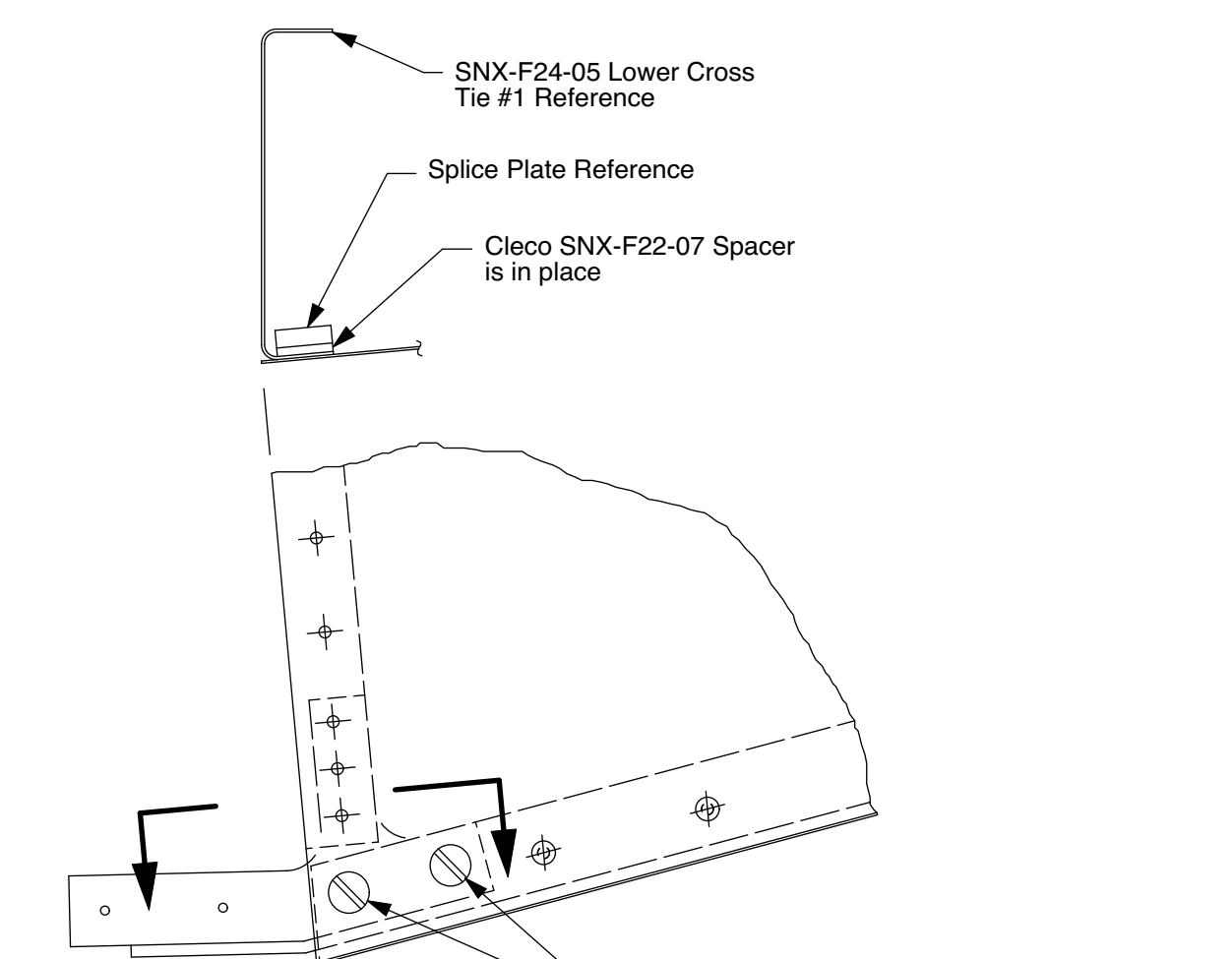


**Detail G**  
Scale: 1/2

NOTE: Details G and H valid for SNB-C05-10 Feedback-Type Actuator Only (actuator with potentiometer to sense actuator position). Reference Revision A of drawing WXB-F18 for installation of the non-feedback actuator supplied with earlier kits.



**Detail H**  
Scale: 1/2



**Detail B**  
Scale: 1/2  
Typical Right and Left Sides

AN525-10R11 Bolt, 4 Required (2 per side)  
AN960-10 Washer, 4 Required (2 per side)  
AN365-1032 Nut, 4 Required (2 per side)  
Through Skin, Longerons and Splice Plate

Part / Ass'y Number	Qty. Req'd	Part Title	Next Assembly
WXB-F18-01	1	Fuselage Tail Cone Assembly	WXB-F11

**waix-B**  
**Fuselage Tail Cone Assembly**

Drawing Scale 1/8 & Noted	Drawing Number WXB-F18	Revision C
------------------------------	---------------------------	---------------