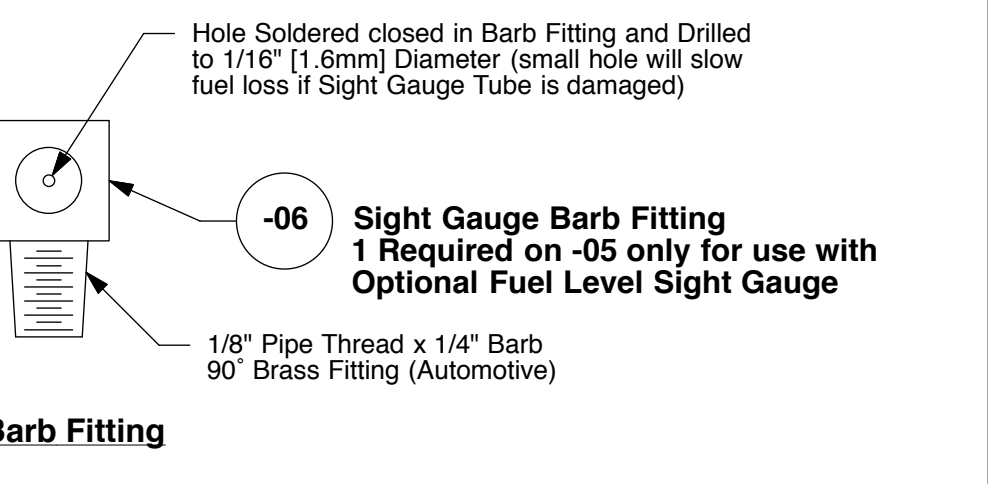
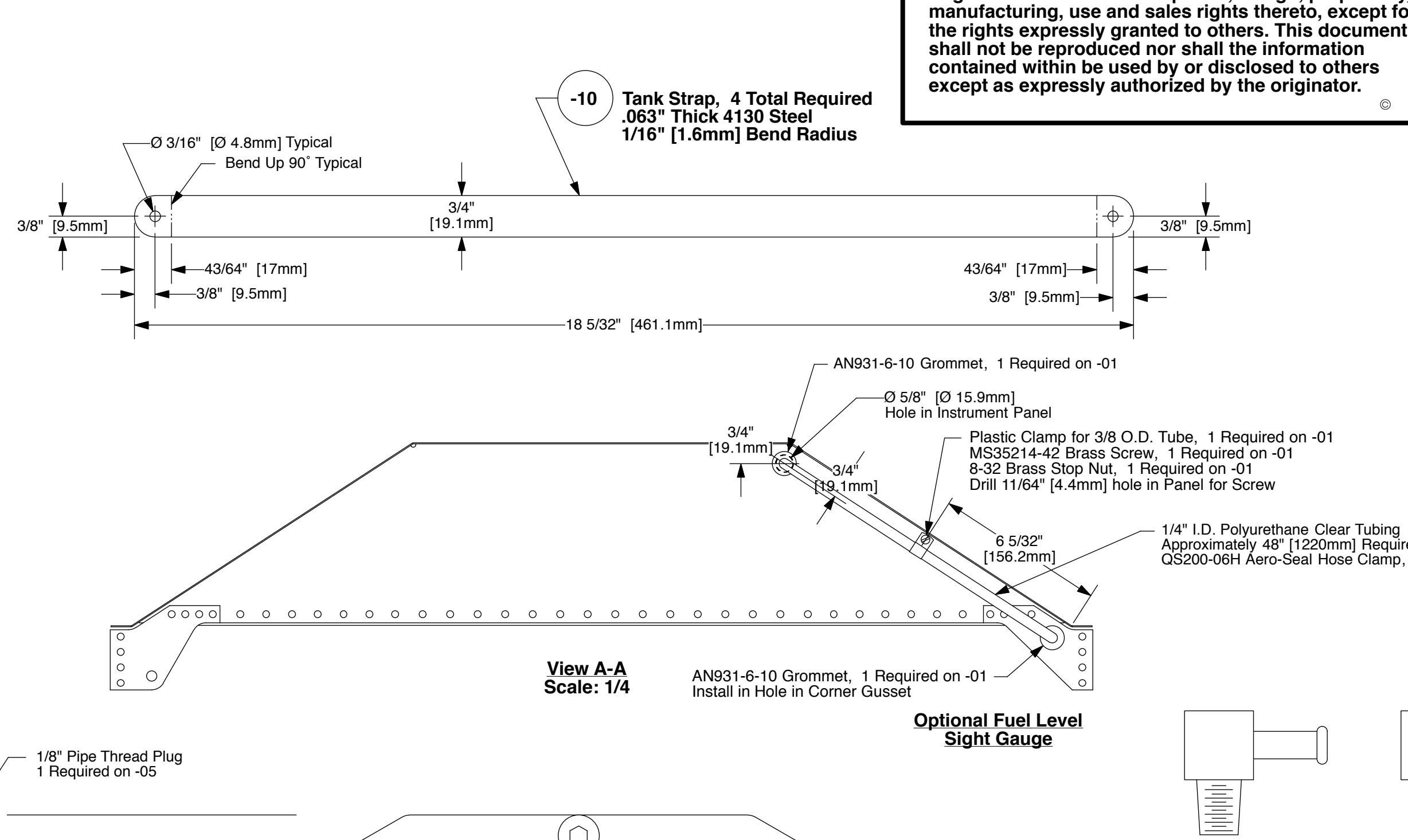
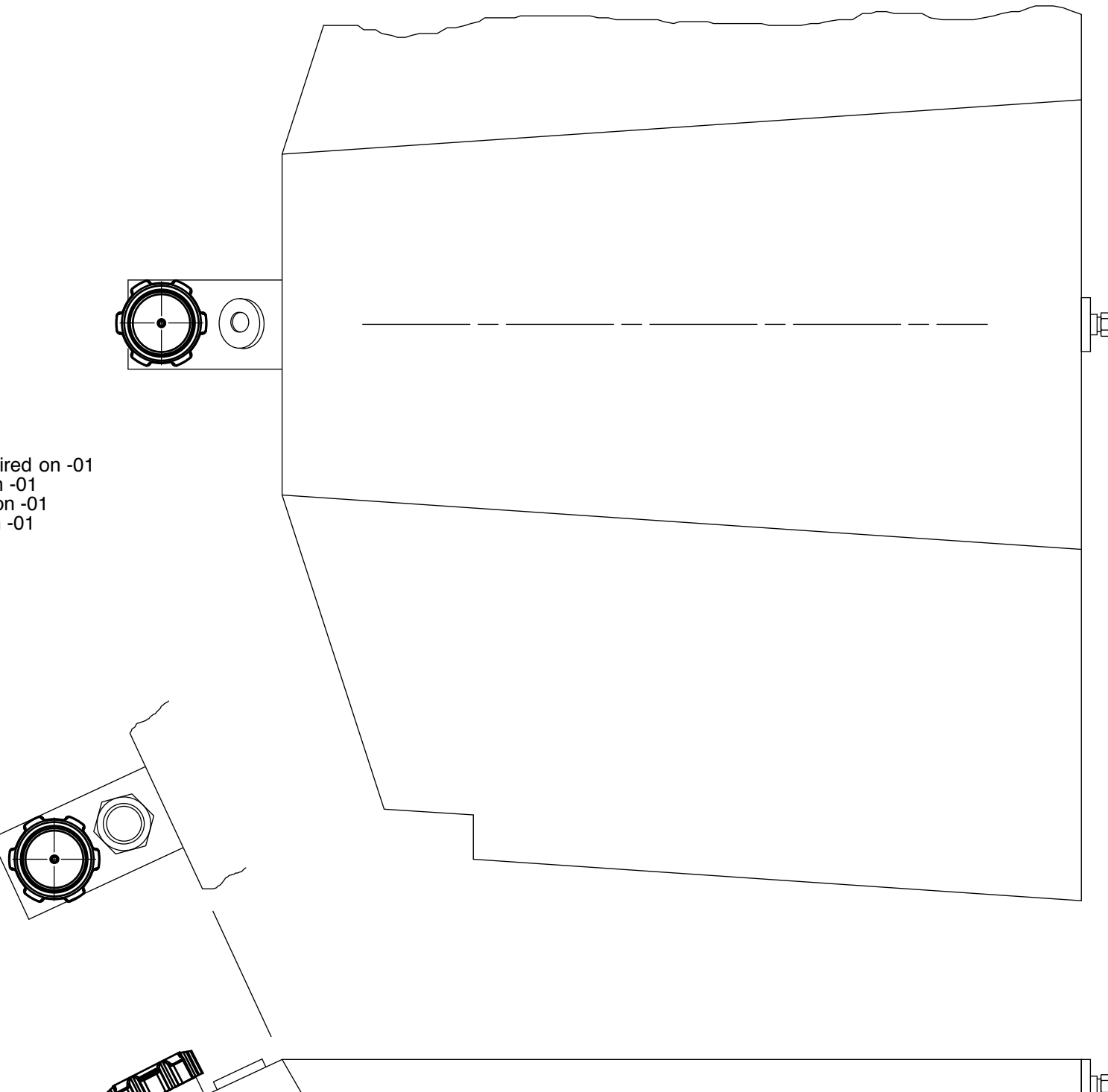
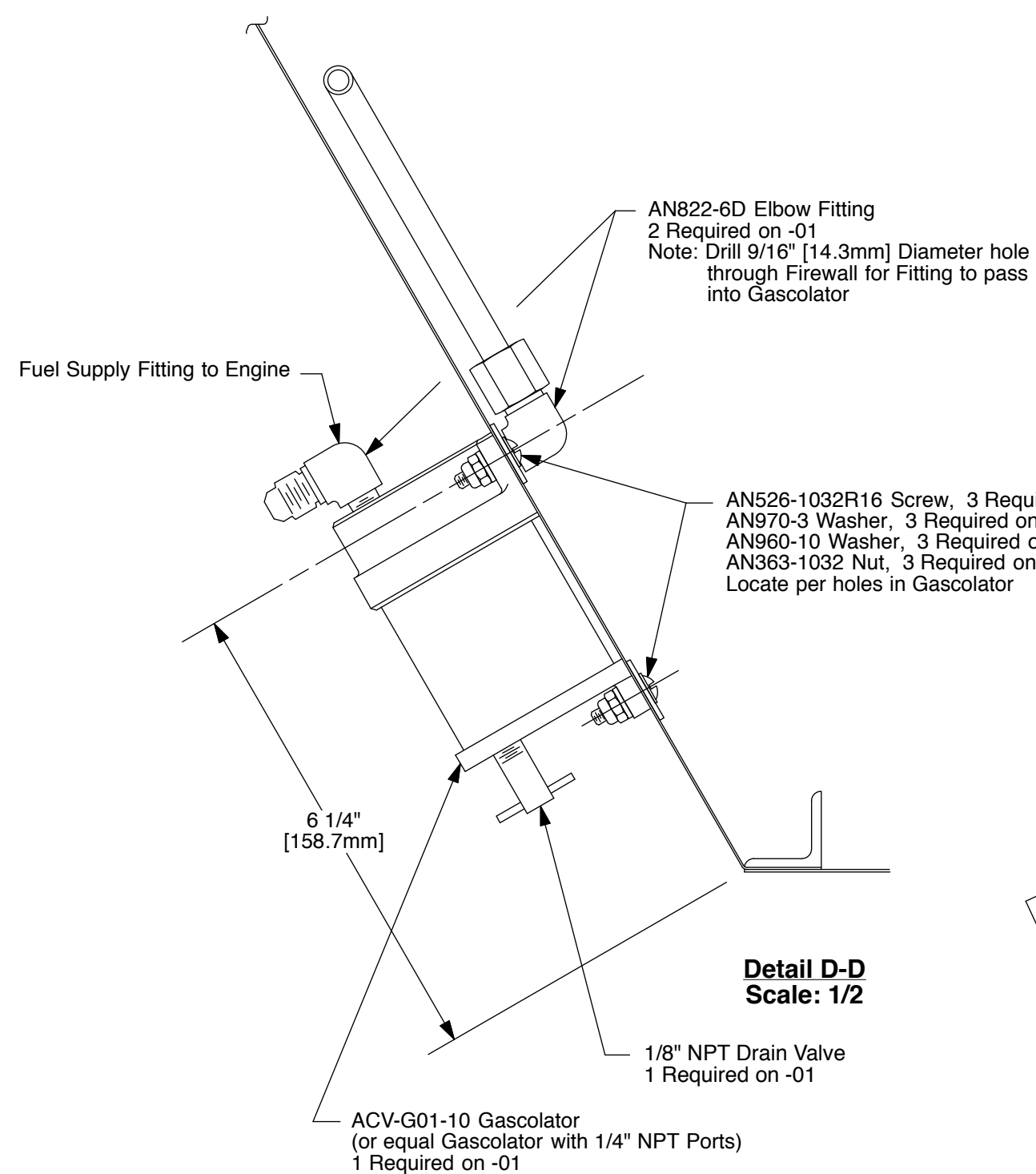
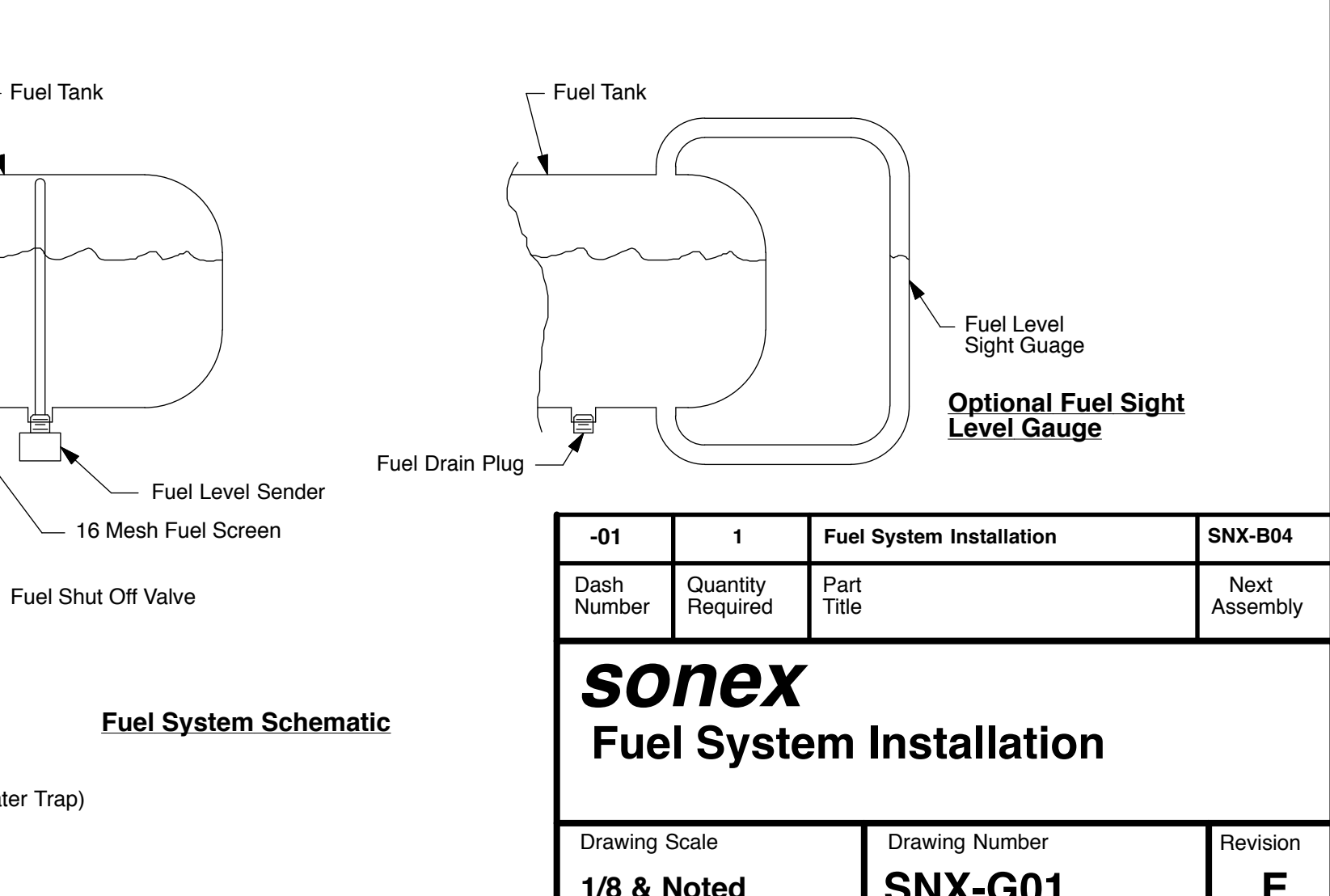
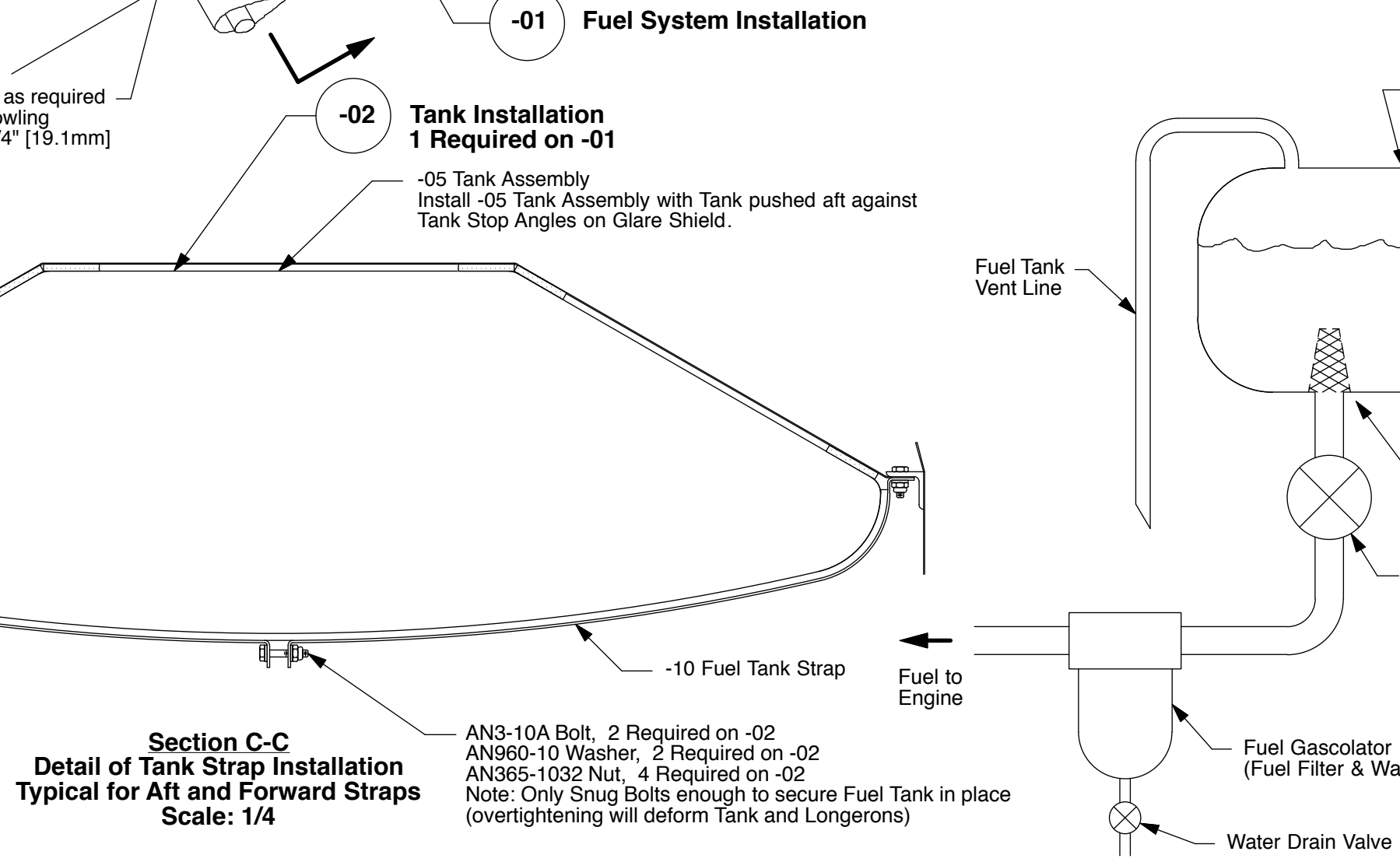
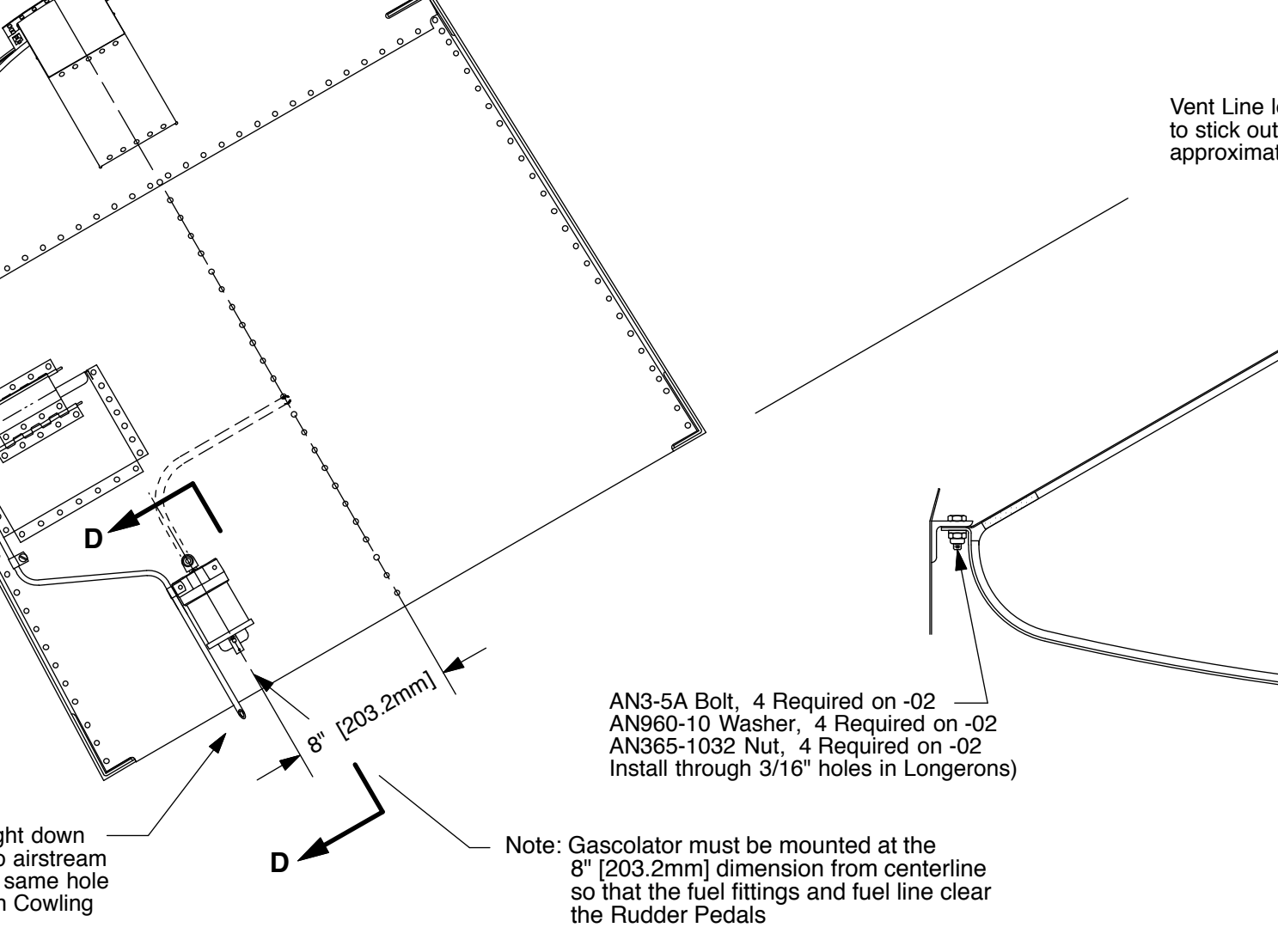
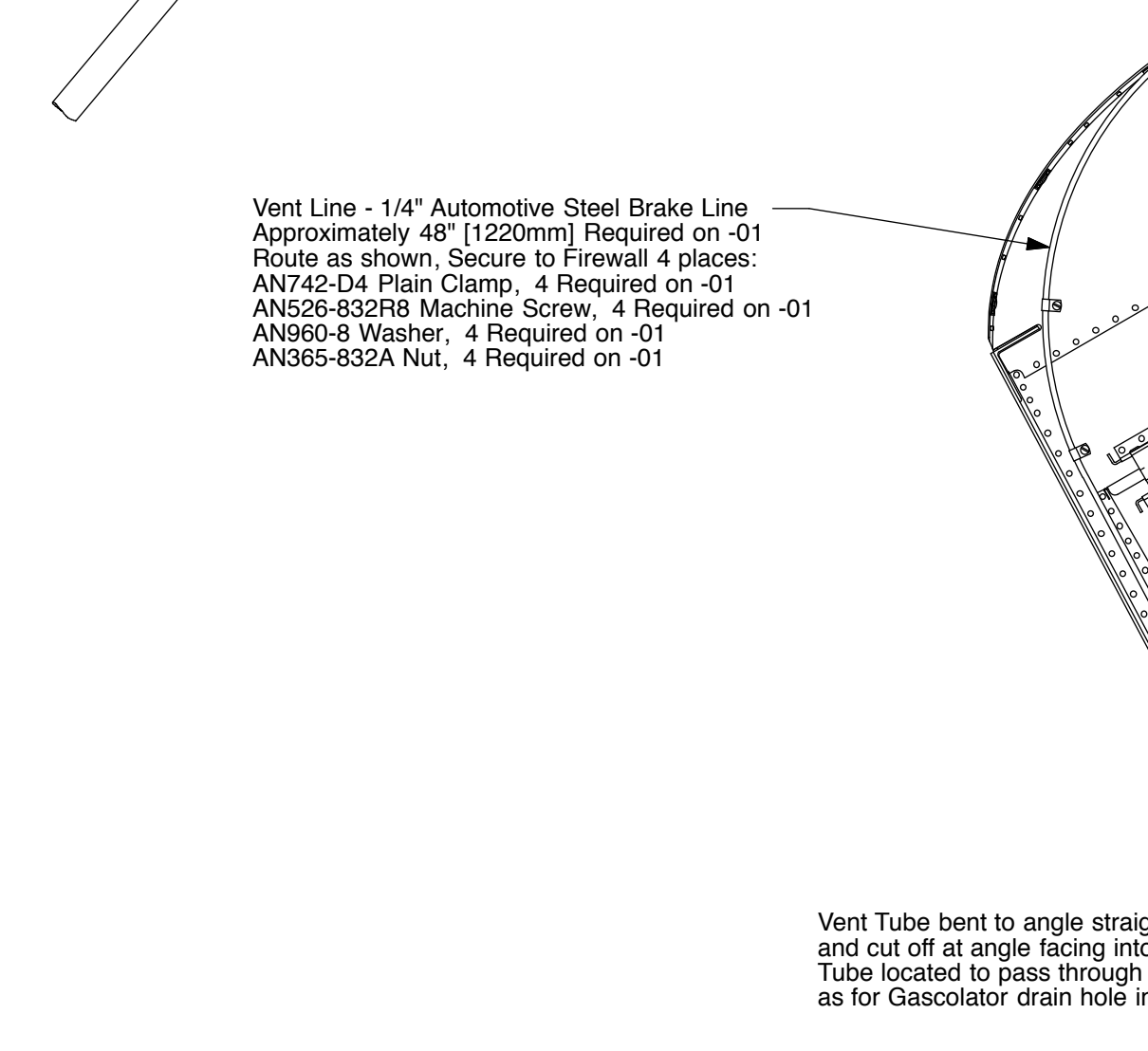
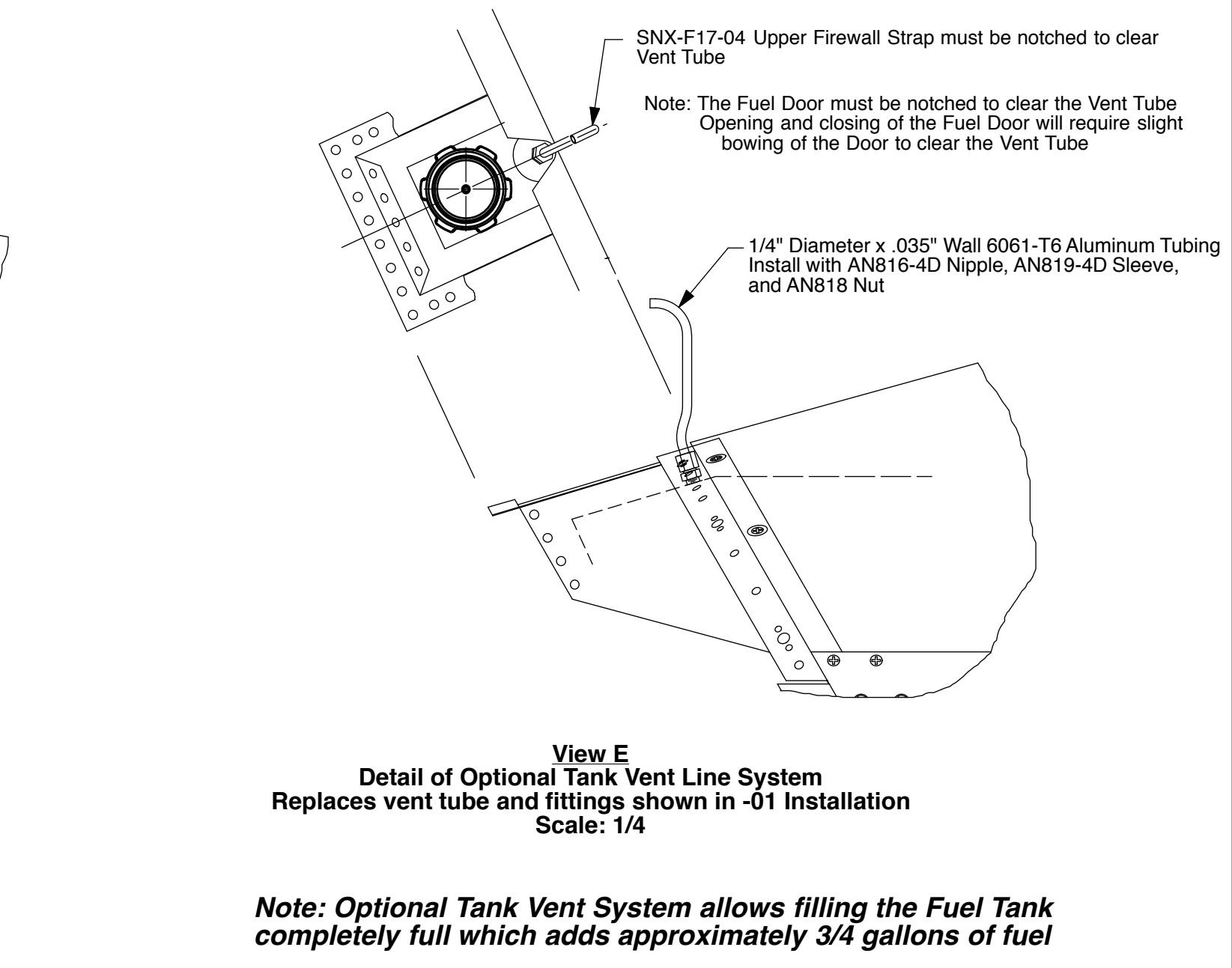
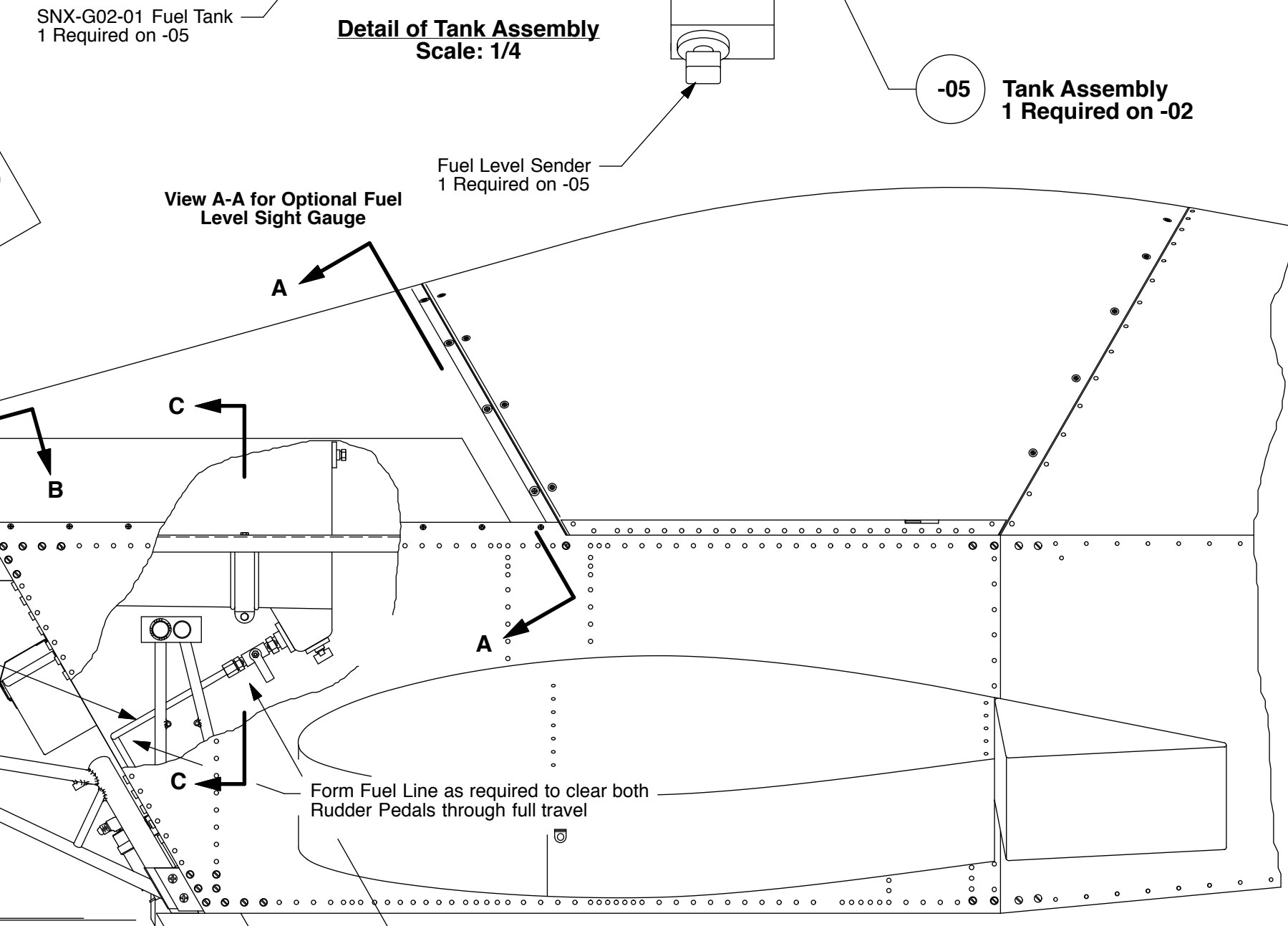
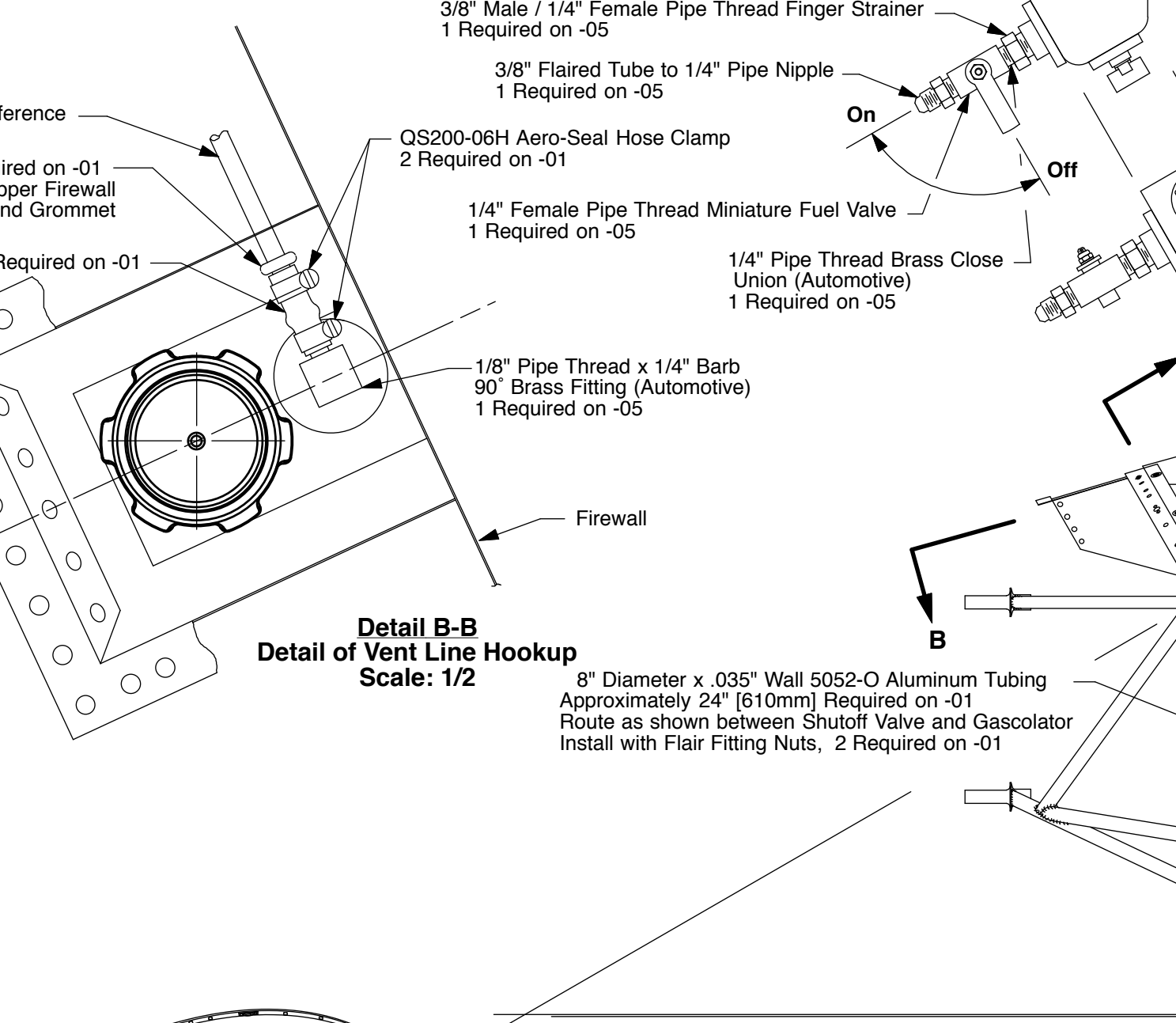
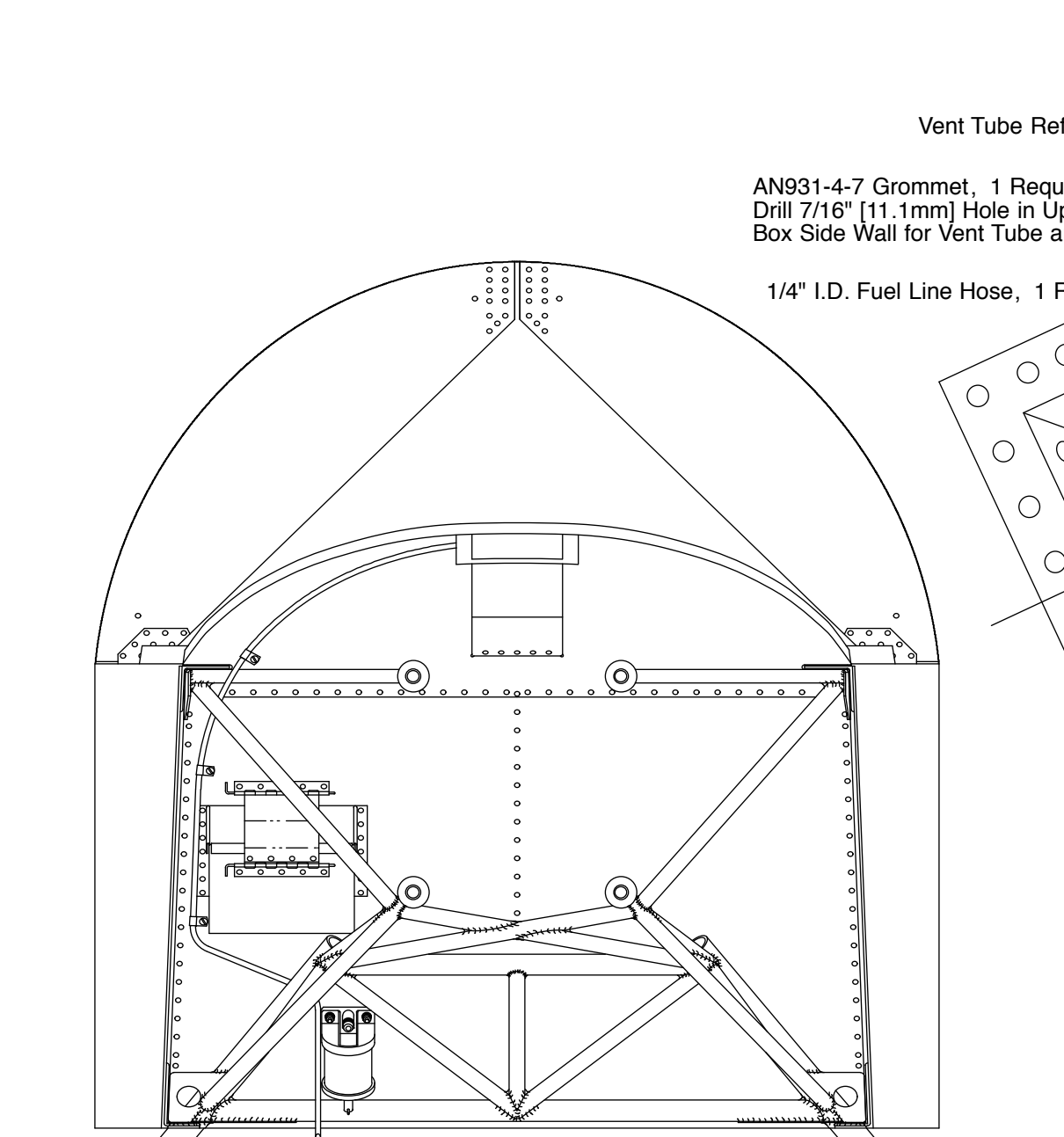
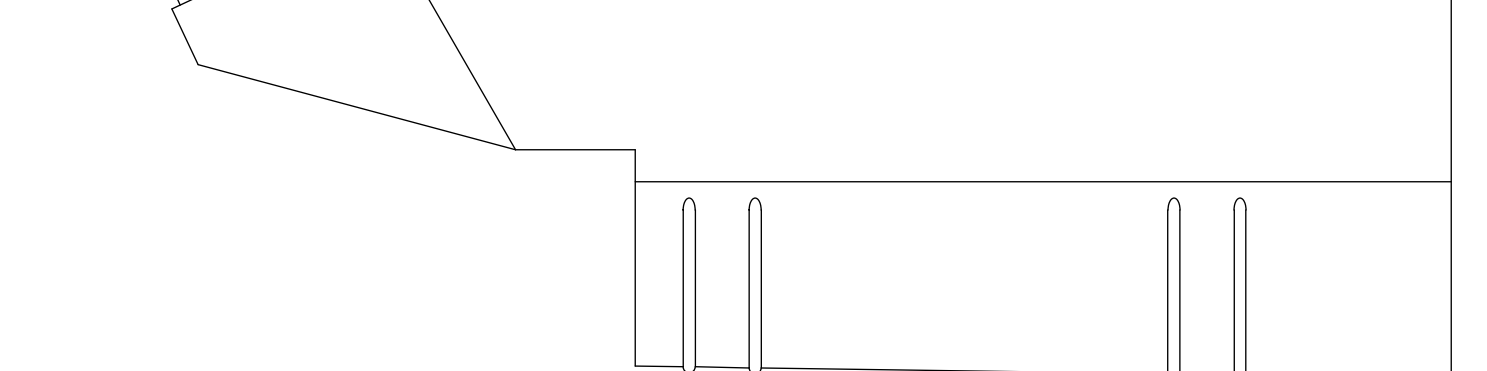


The information disclosed herein is the property of the originator who reserves all patent, design, proprietary, manufacturing, use and sales rights thereto, except for the rights expressly granted to others. This document shall not be reproduced nor shall the information contained within be used by or disclosed to others except as expressly authorized by the originator.

Revision Letter	Change Description	Revision Date
A	Productibility Change Revised Tank Straps to have center bolt to tighten Straps in lieu of bolts through longerons. Added -08 & -09 Tank Straps, 2 Required on -02 (was) -03 & -04, 1 Required on -02 Added View "E" depicting optional Tank Vent System	06/10/01
B	Productibility Change Revised to show Electronic Fuel Gauge (Sight gauge show as Optional)	11/21/03
C	Part Call-out Correction View E AN816-4D (was AN816-4-4D)	09/09/13
D	Part Call-out Correction View E Added AN819-4D Sleeve	10/16/13
E	Replaced -08 and -09 Fuel Tank Strap with -10 Fuel Tank Strap, Qty. 4. Deleted -07 gascolator Mount brackets. Changed gascolator detail to show Usher-brand gascolator installation (Detail D-D). Added note about deleting the gascolator.	10/19/15



**Optional Fuel Line Installation Without a Gascolator (Not Depicted)**  
Sonex Aircraft has successfully flown our factory aircraft without a gascolator installed. If you choose to eliminate the gascolator you must install a fuel filter between the fuel tank and the AeroInjector (carburetor). Sonex Aircraft recommends a -6AN automotive inline fuel filter.  
  
Water can be drained from the fuel through the AeroInjector. The use of a bowl-type carburetor requires the inclusion of a water-trap/drain in the low-point of the fuel system.



Dash Number	Quantity Required	Part Title	Next Assembly
-01	1	Fuel System Installation	SNX-B04

<b>sonex</b>	
<b>Fuel System Installation</b>	
Drawing Scale	Drawing Number
1/8 & Noted	SNX-G01
Revision	E