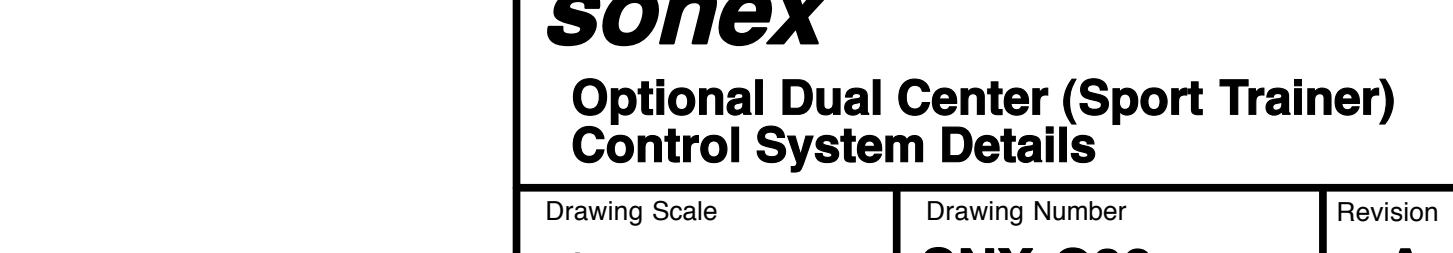
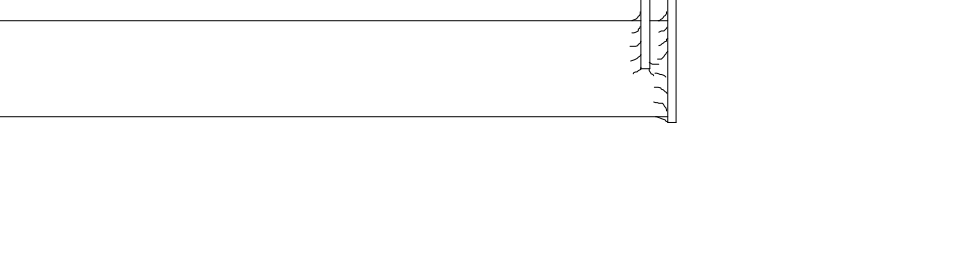
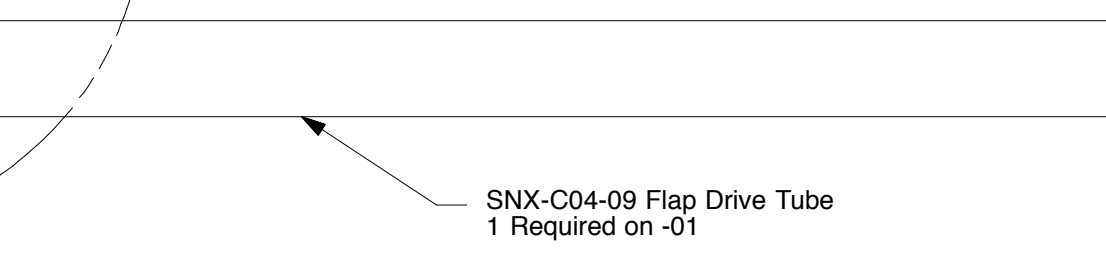
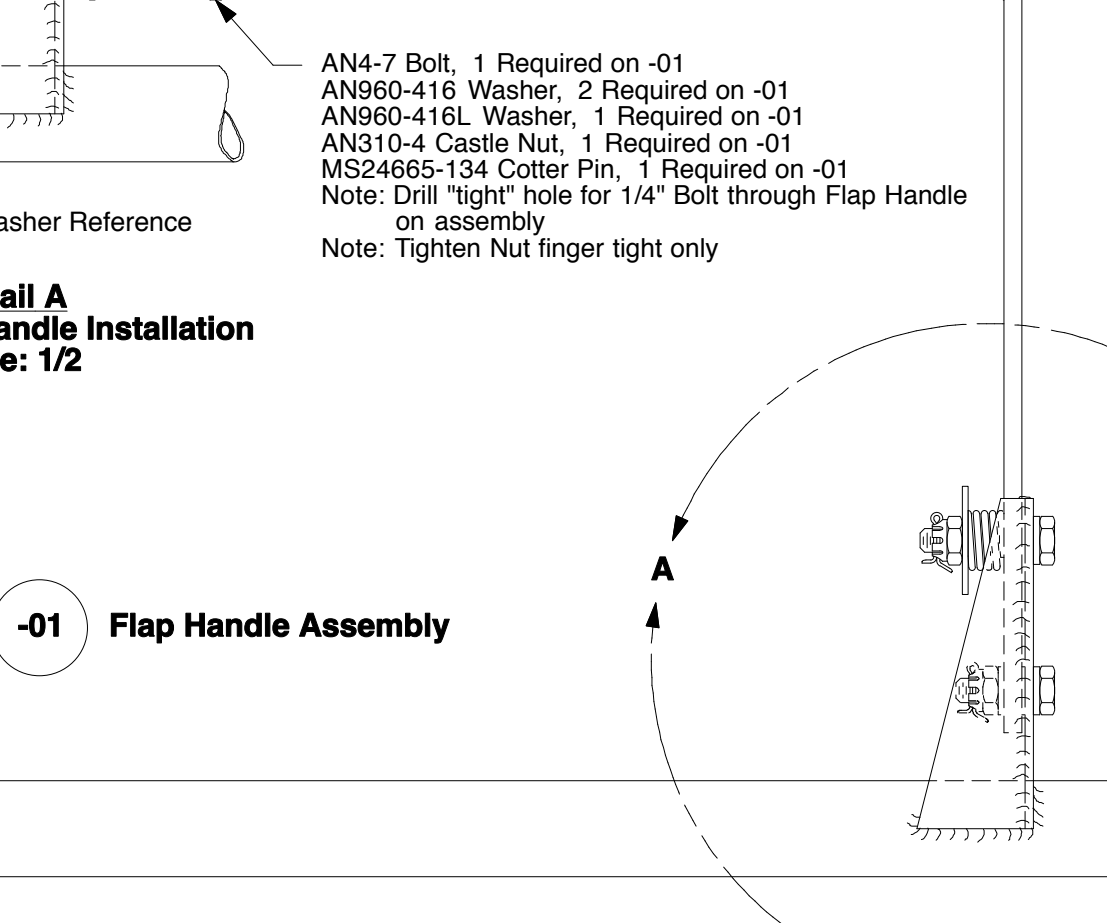
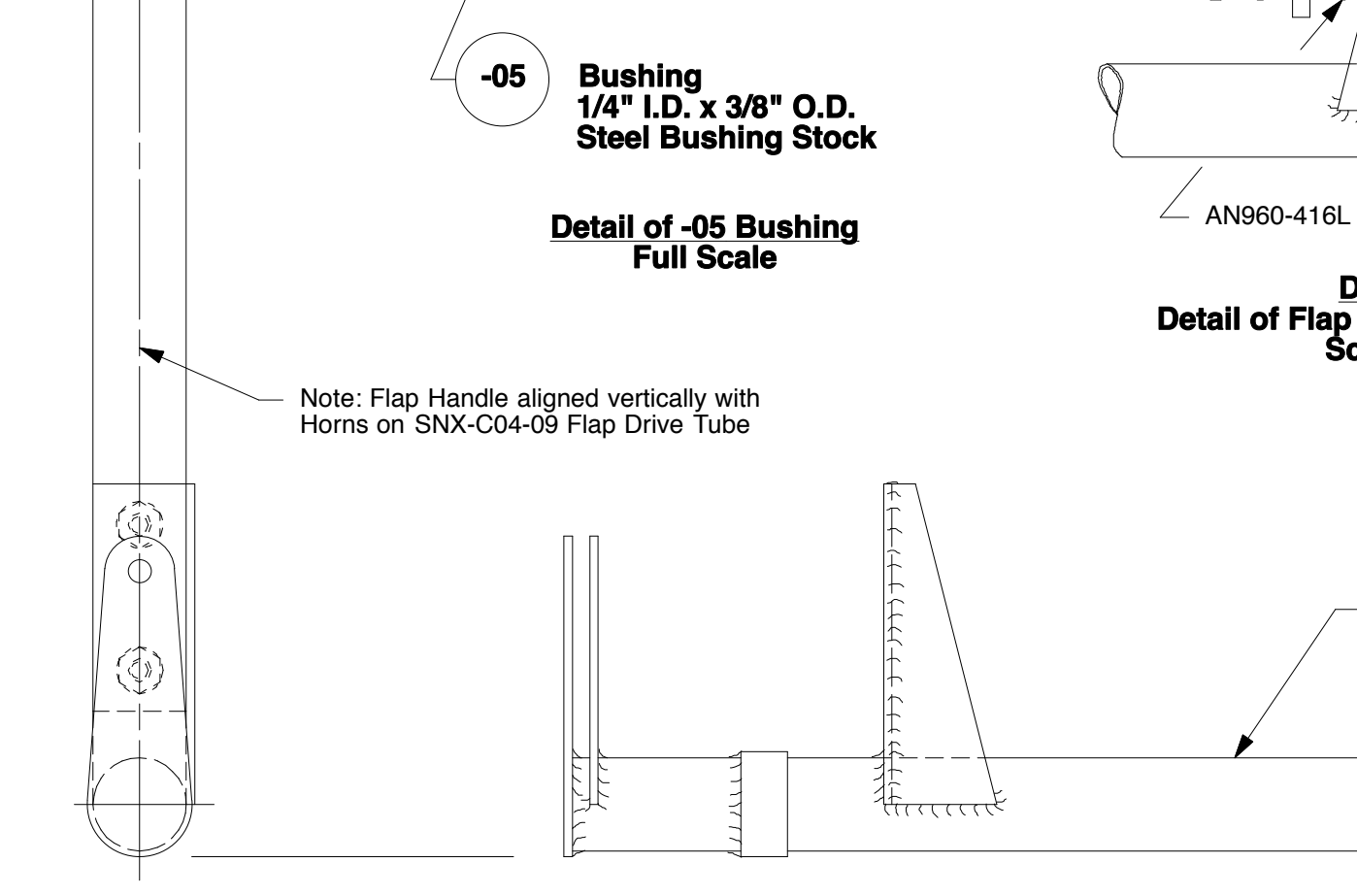
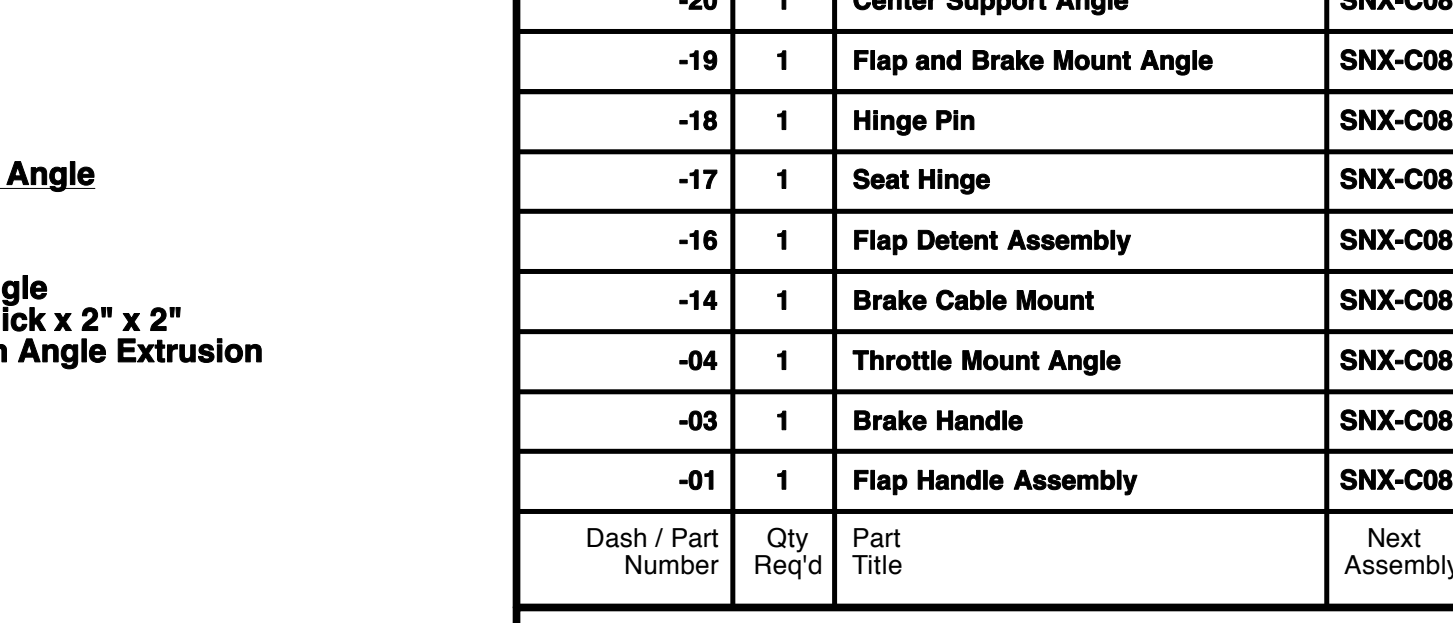
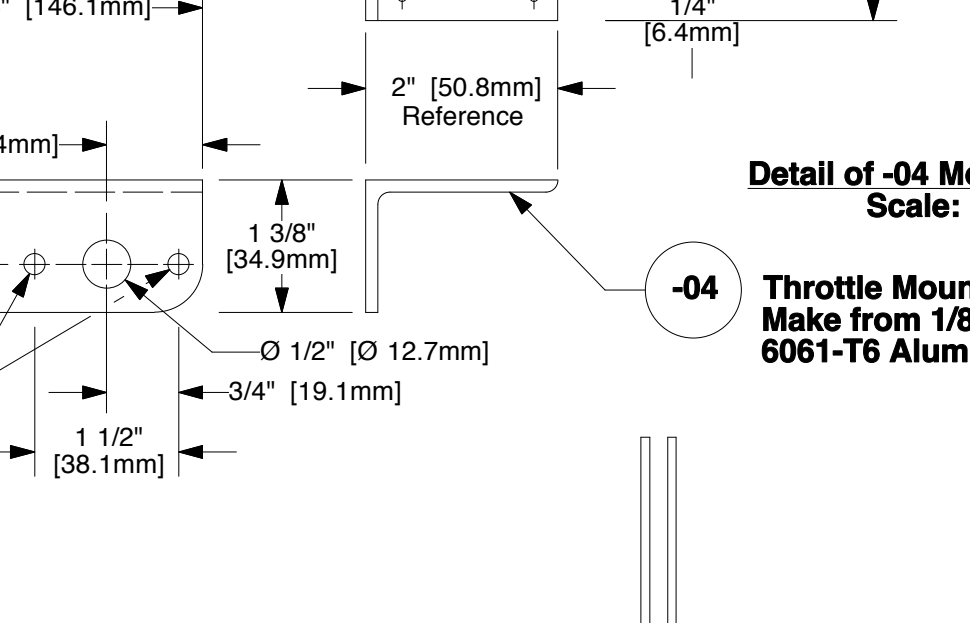
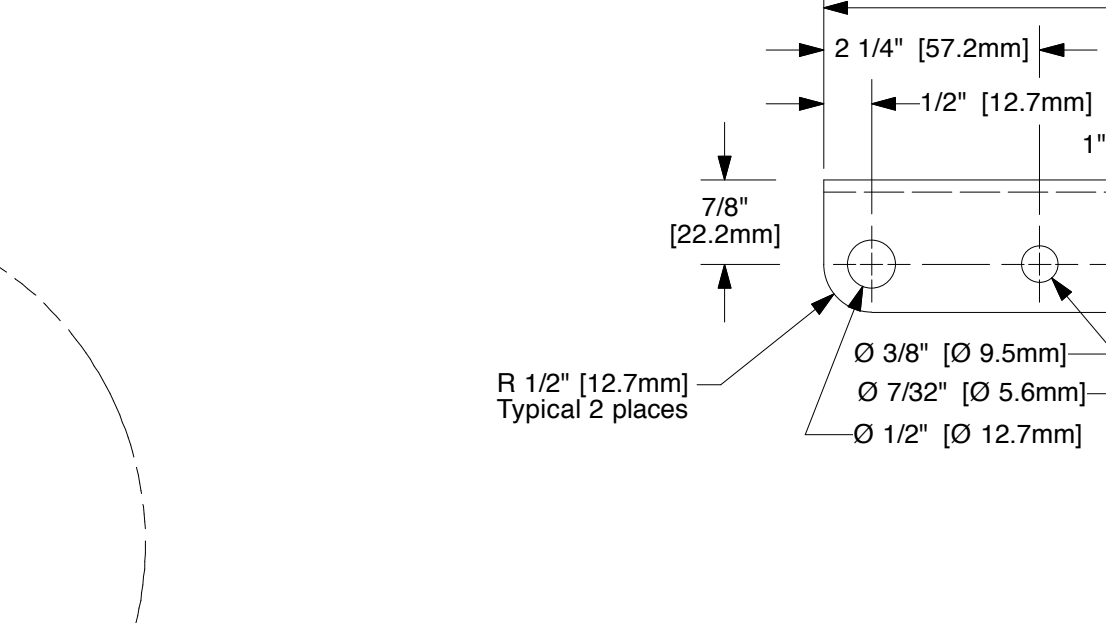
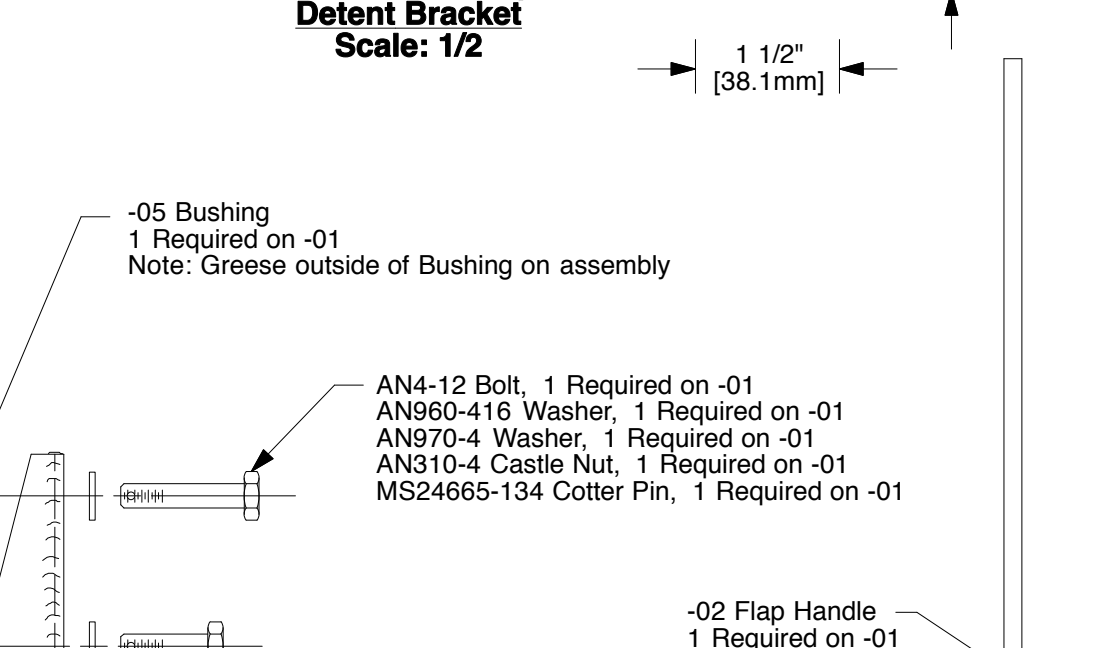
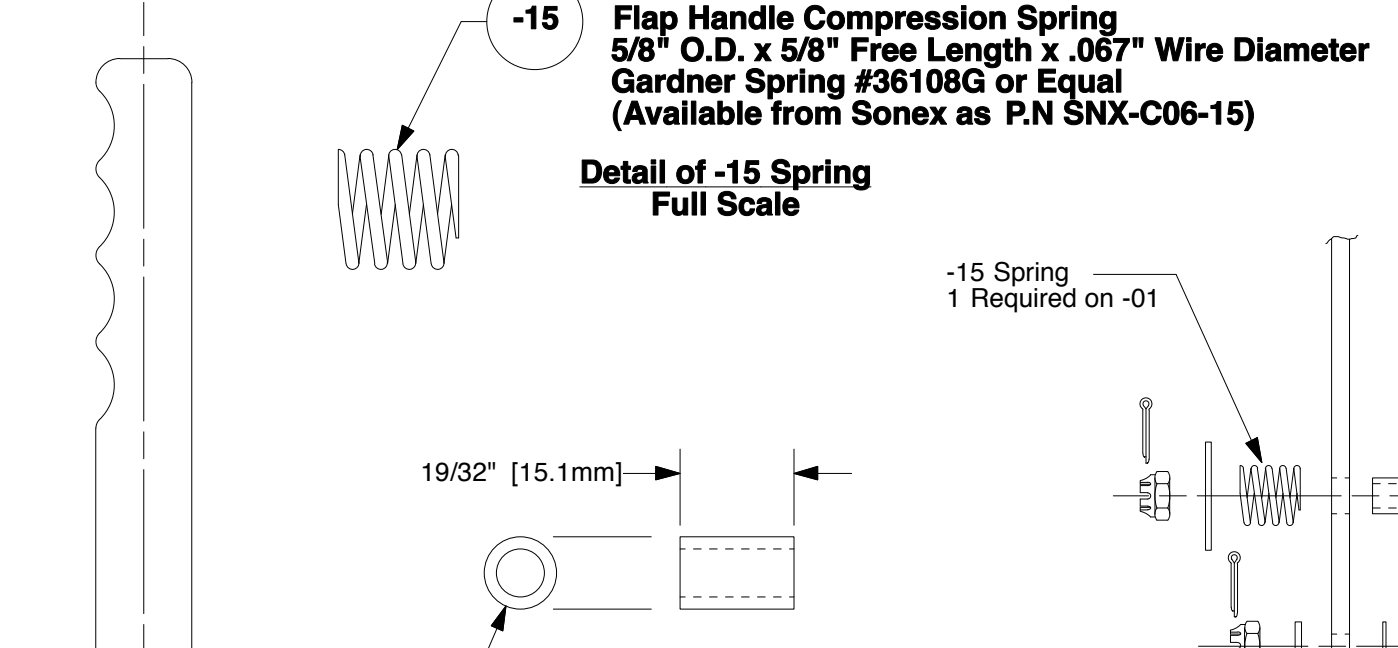
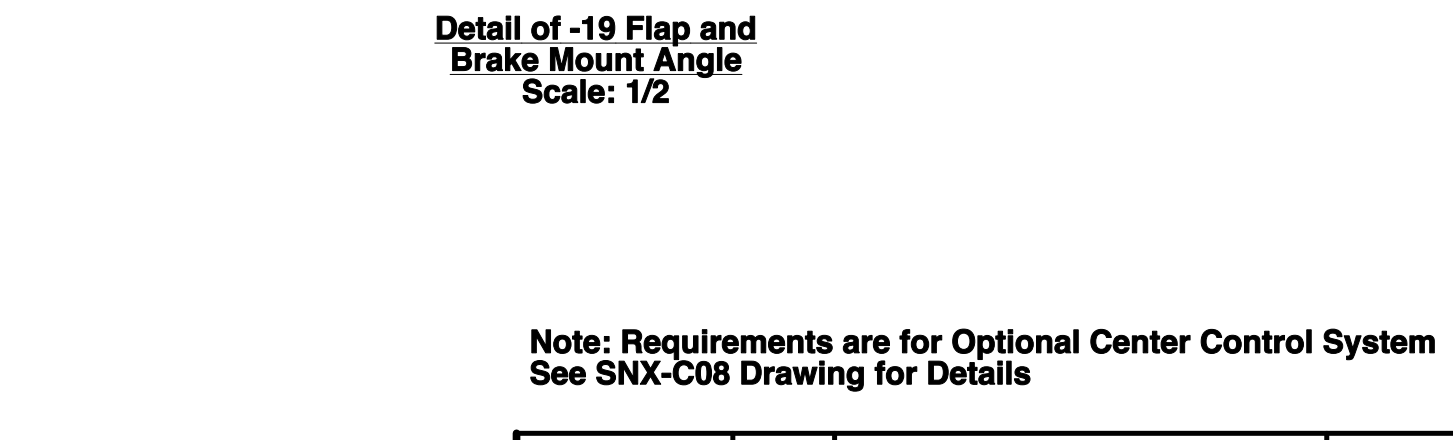
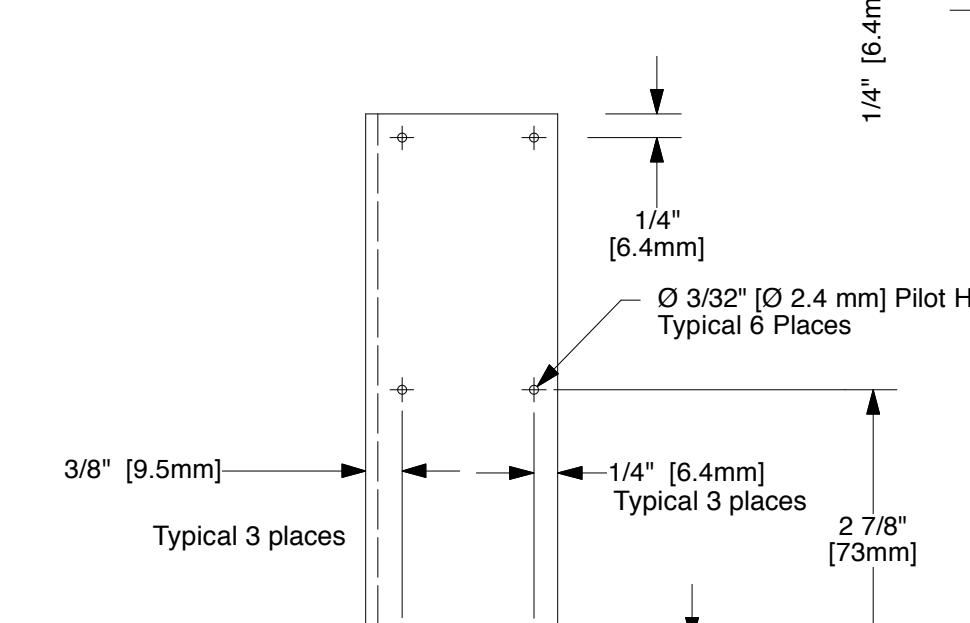
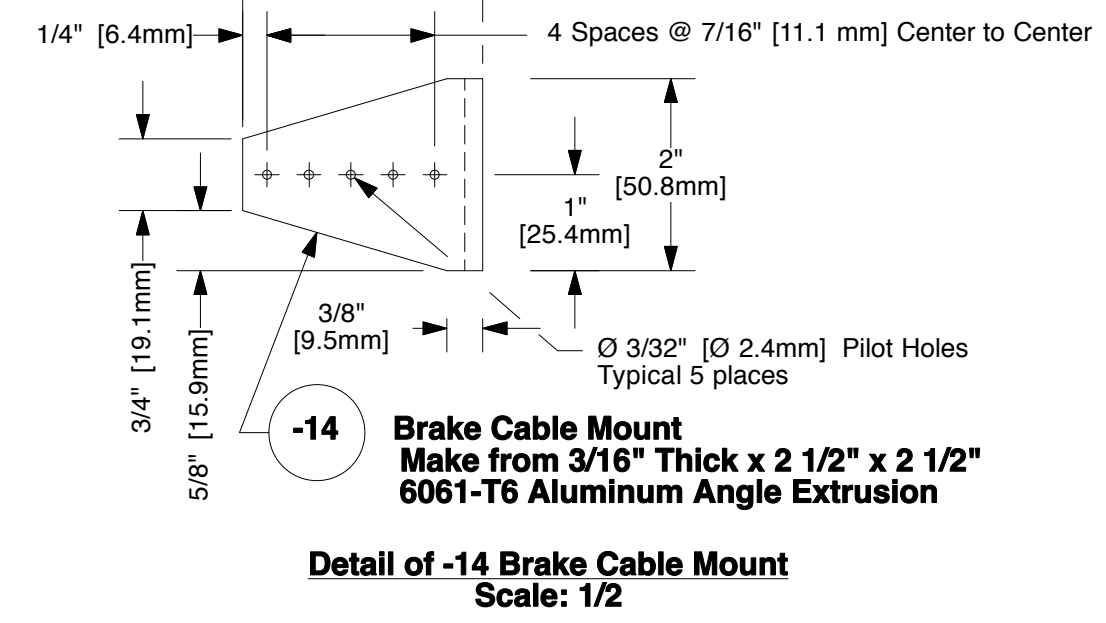
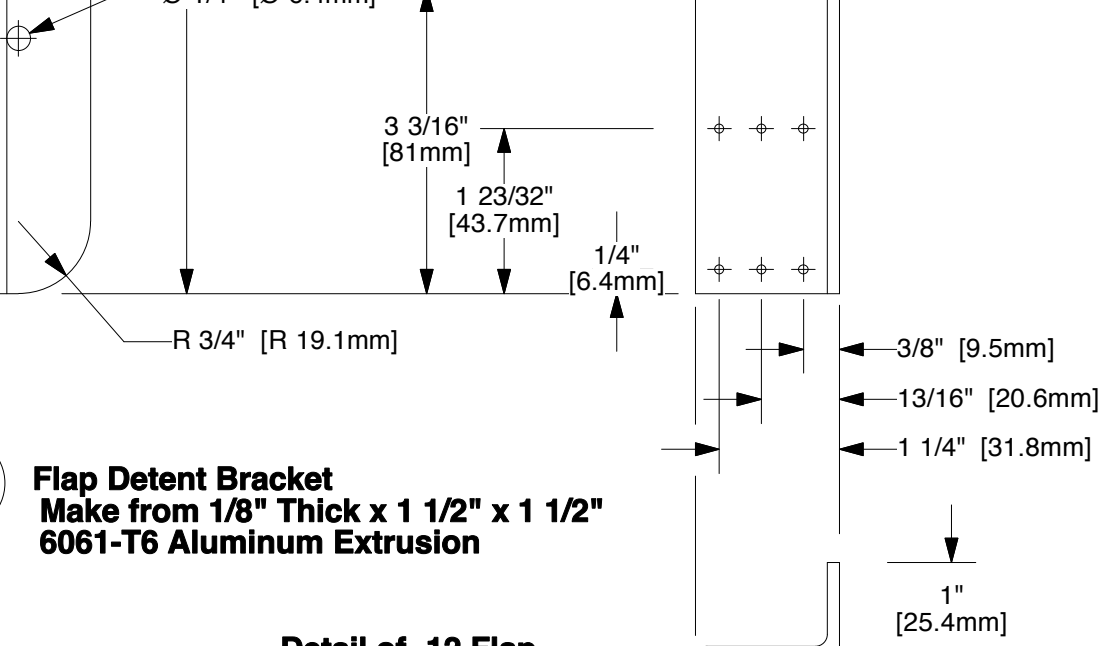
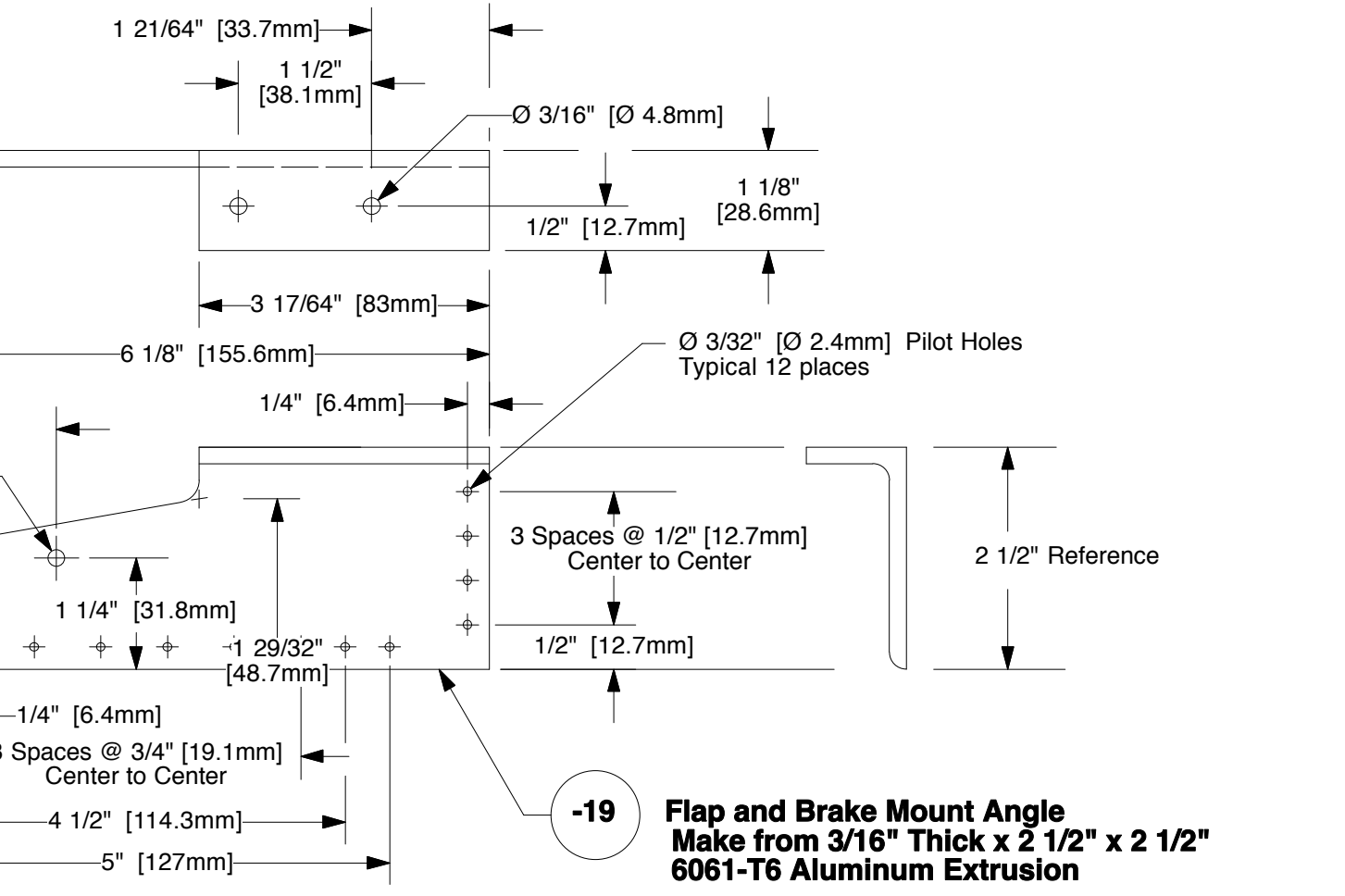
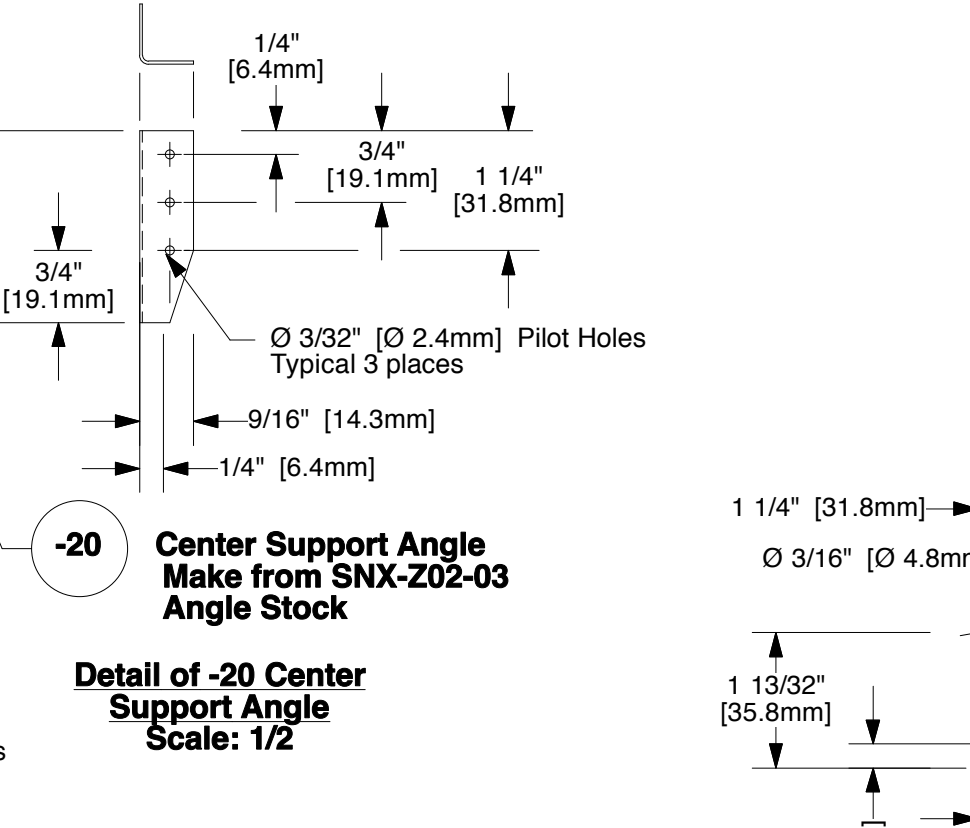
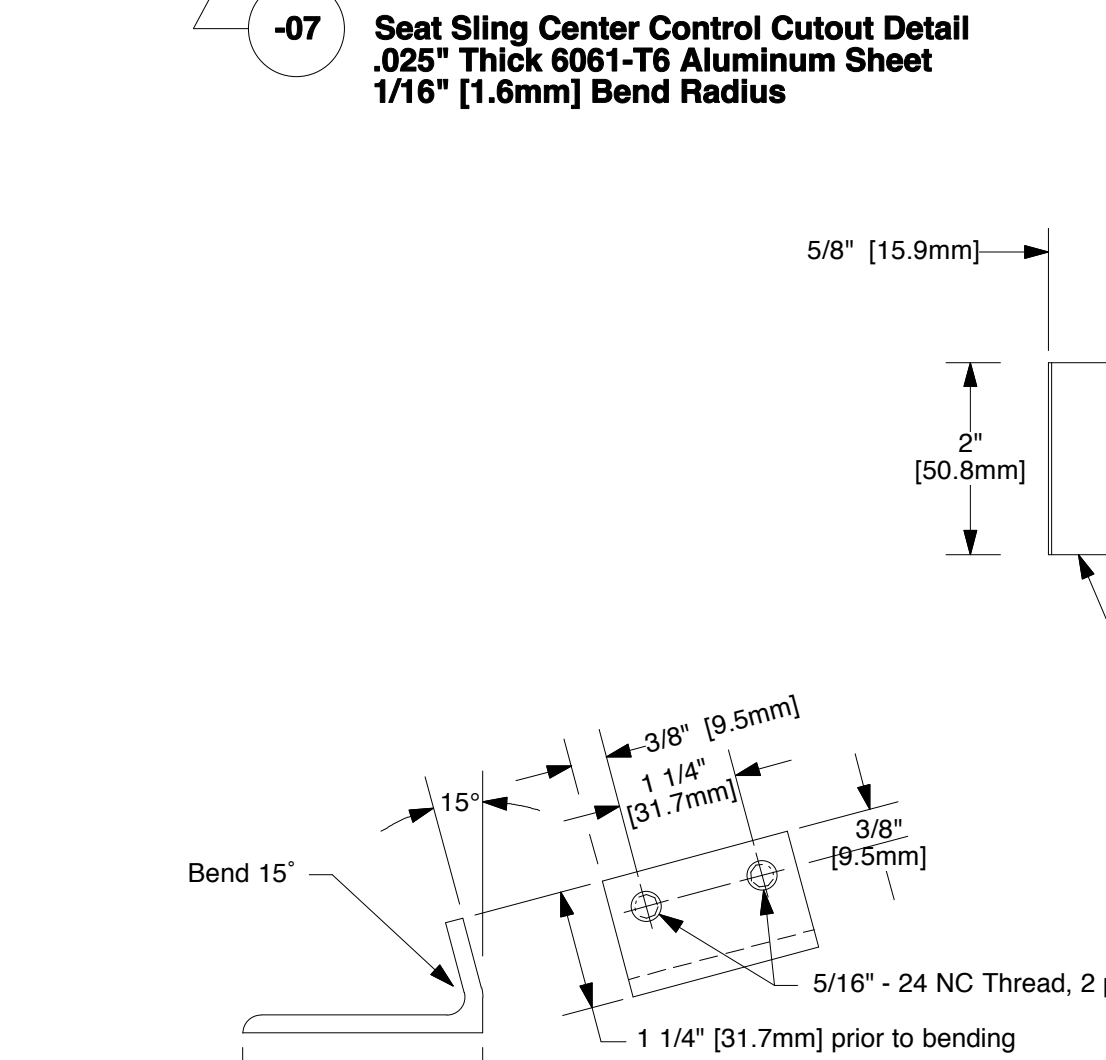
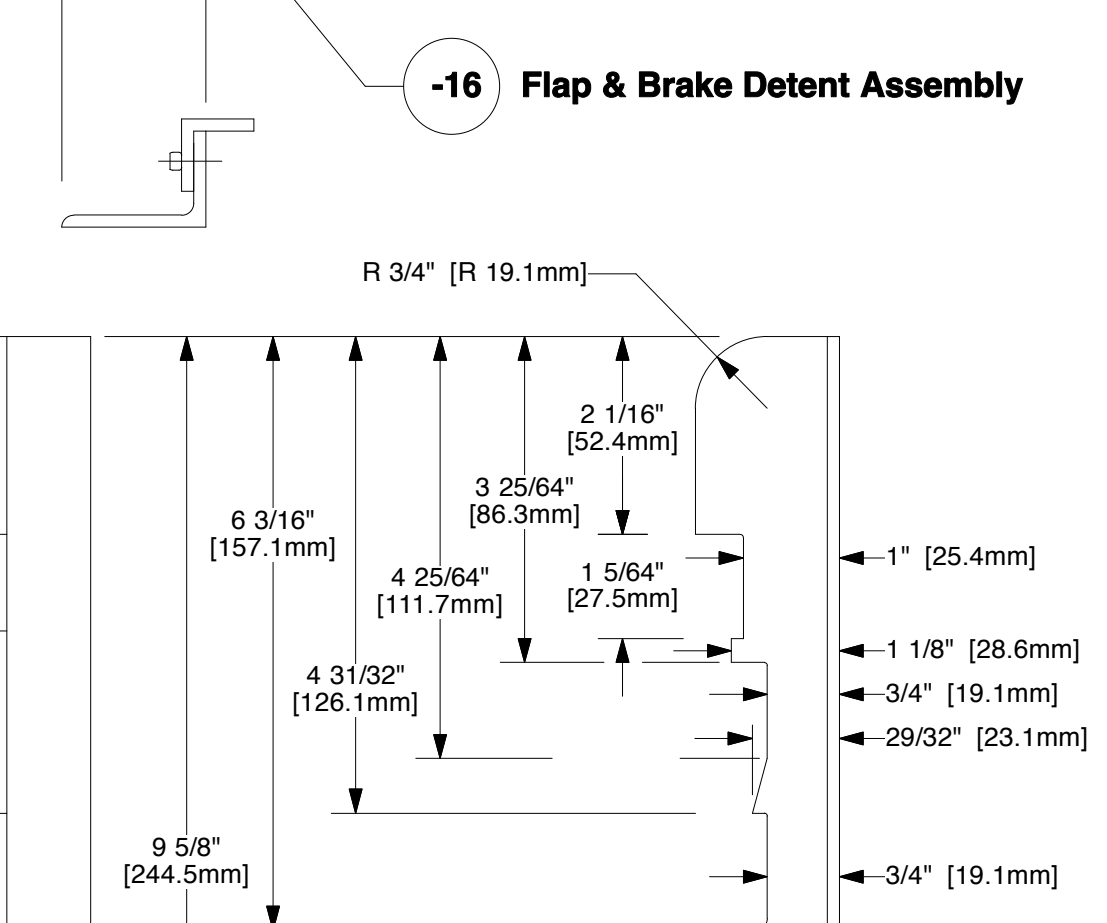
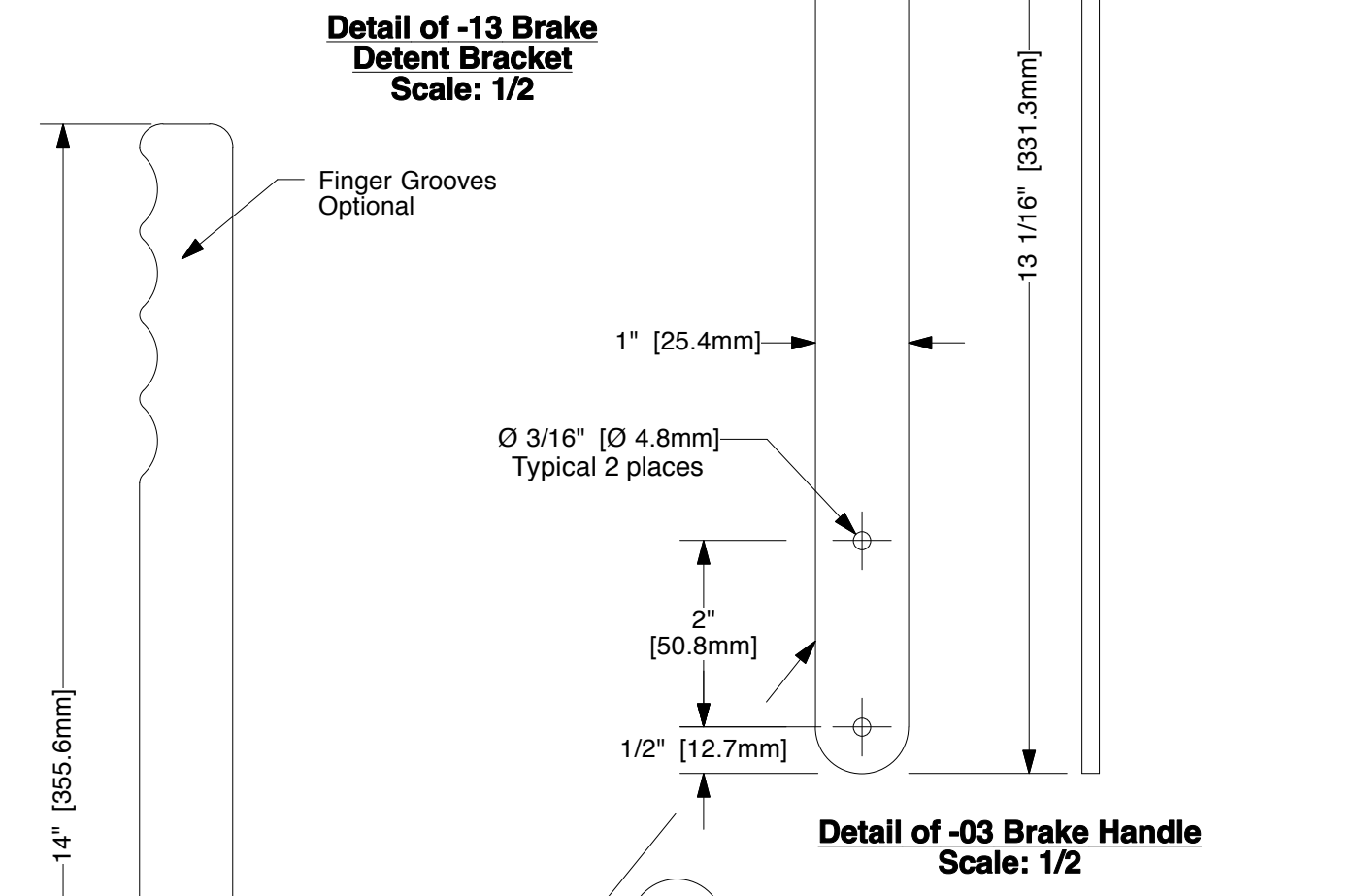
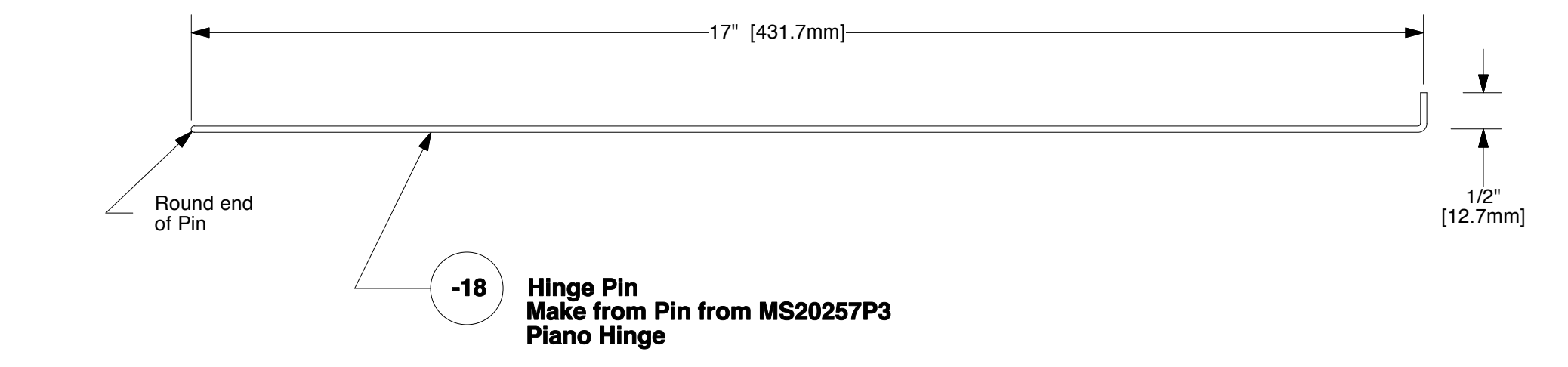
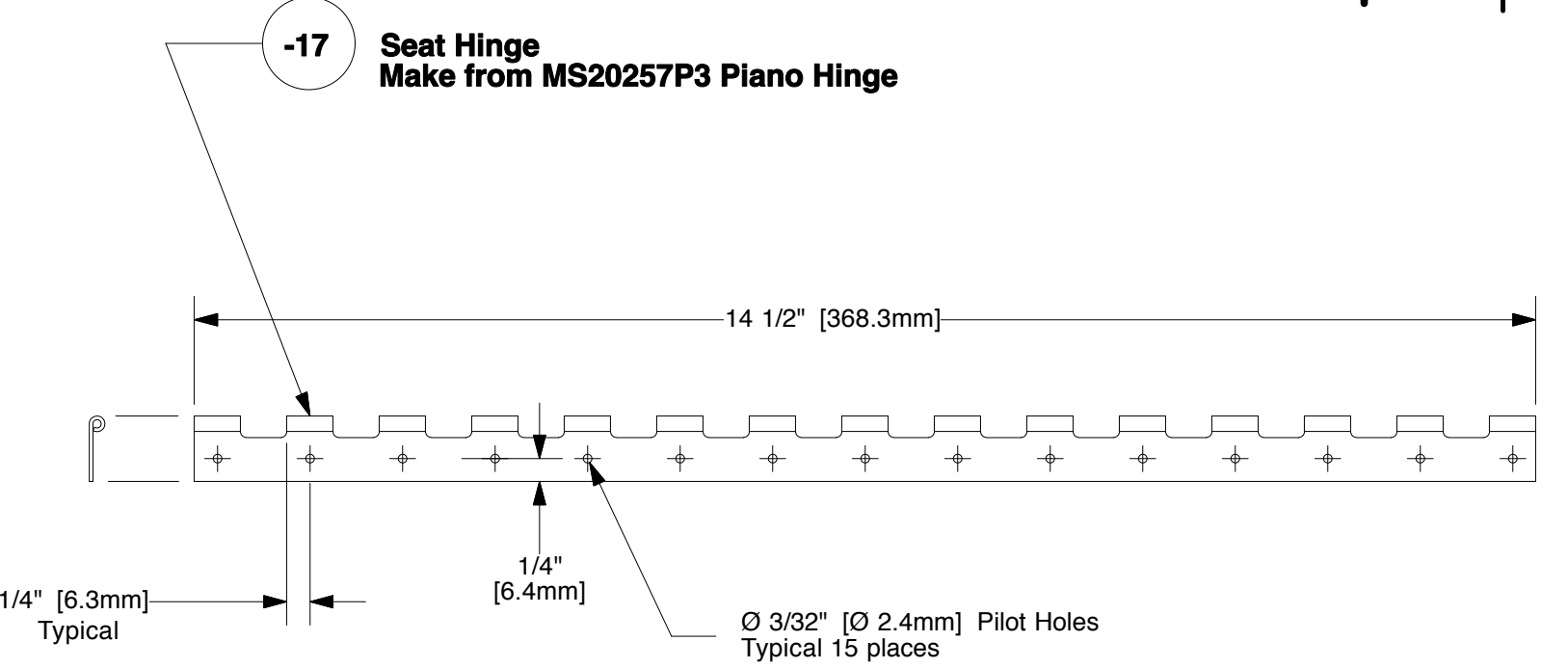
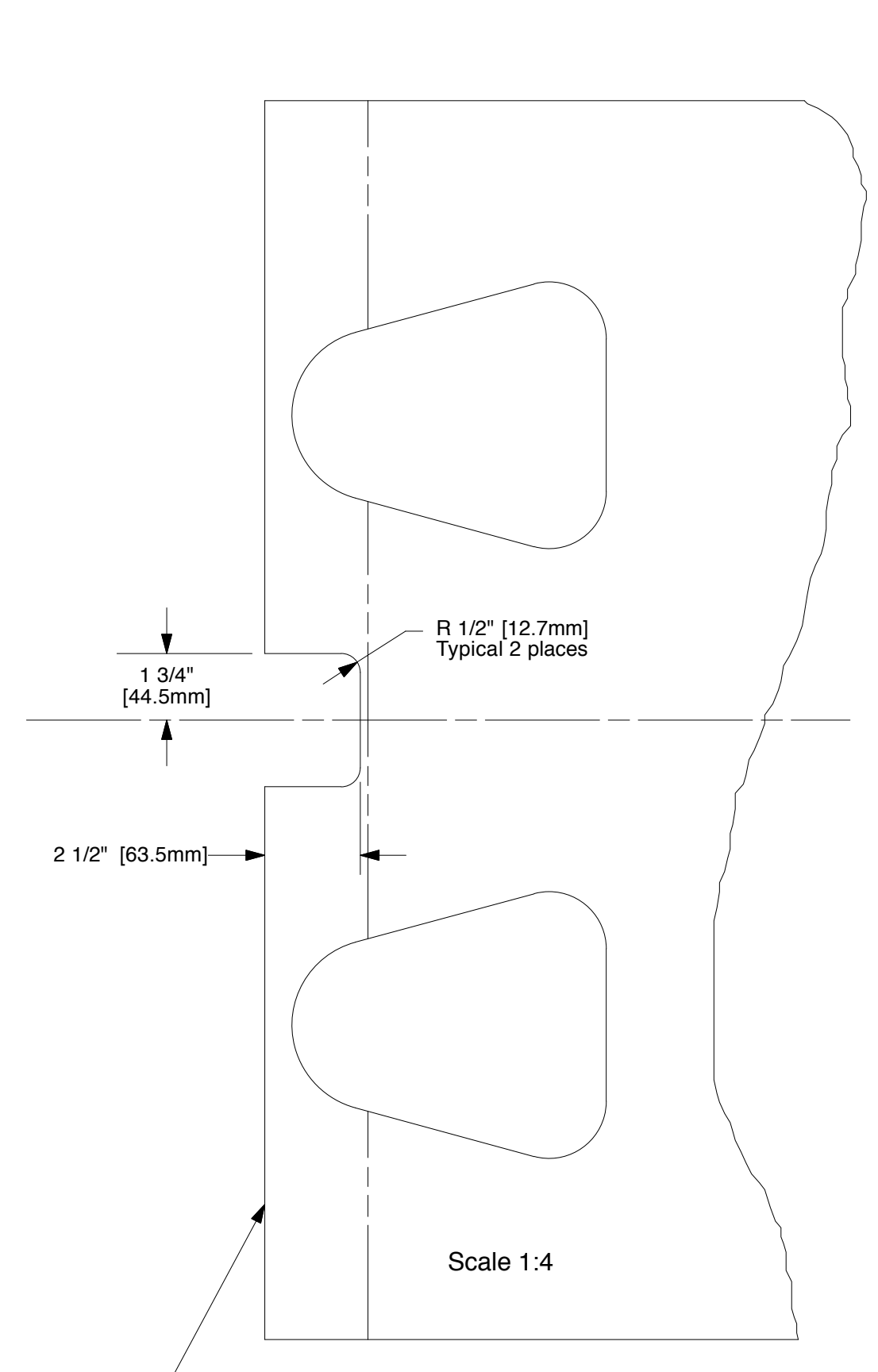
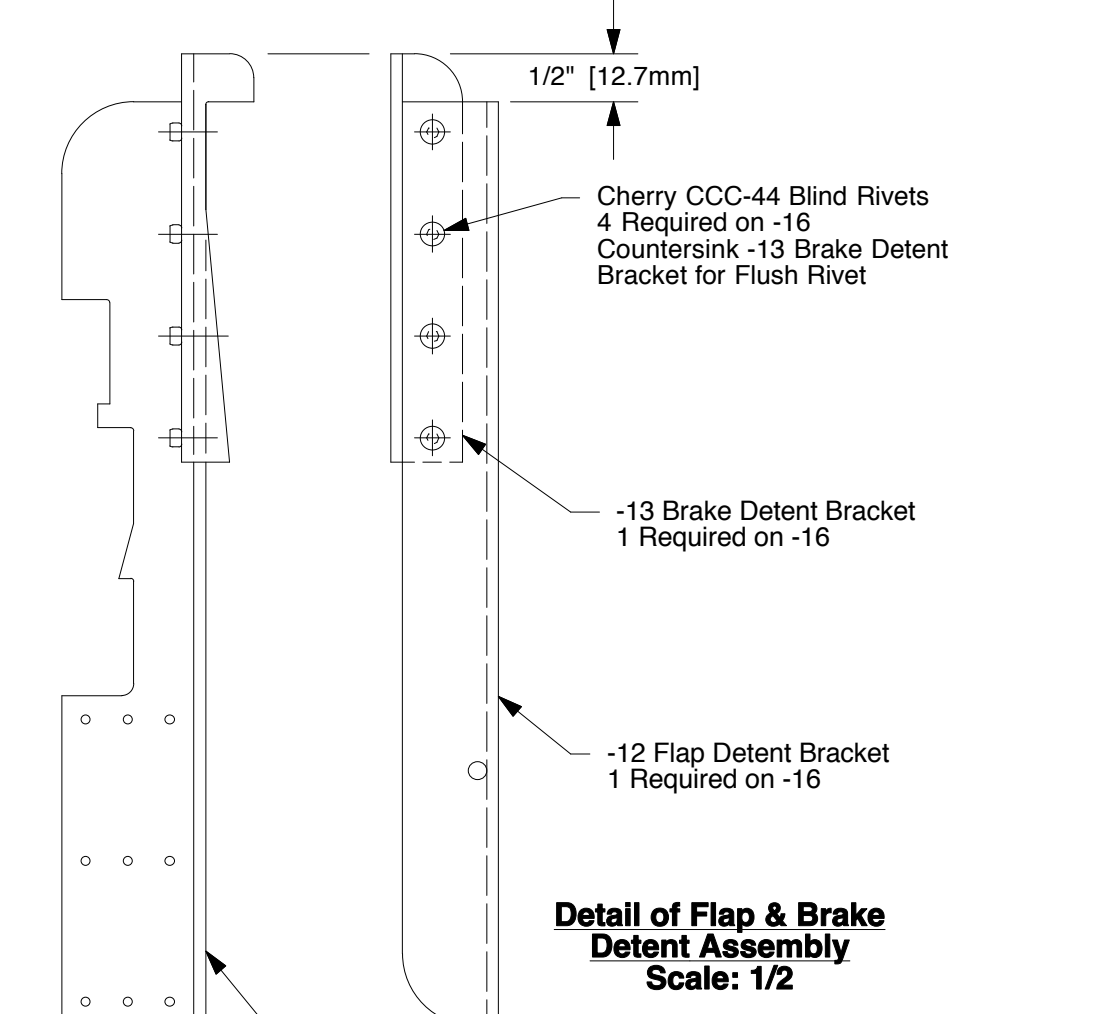
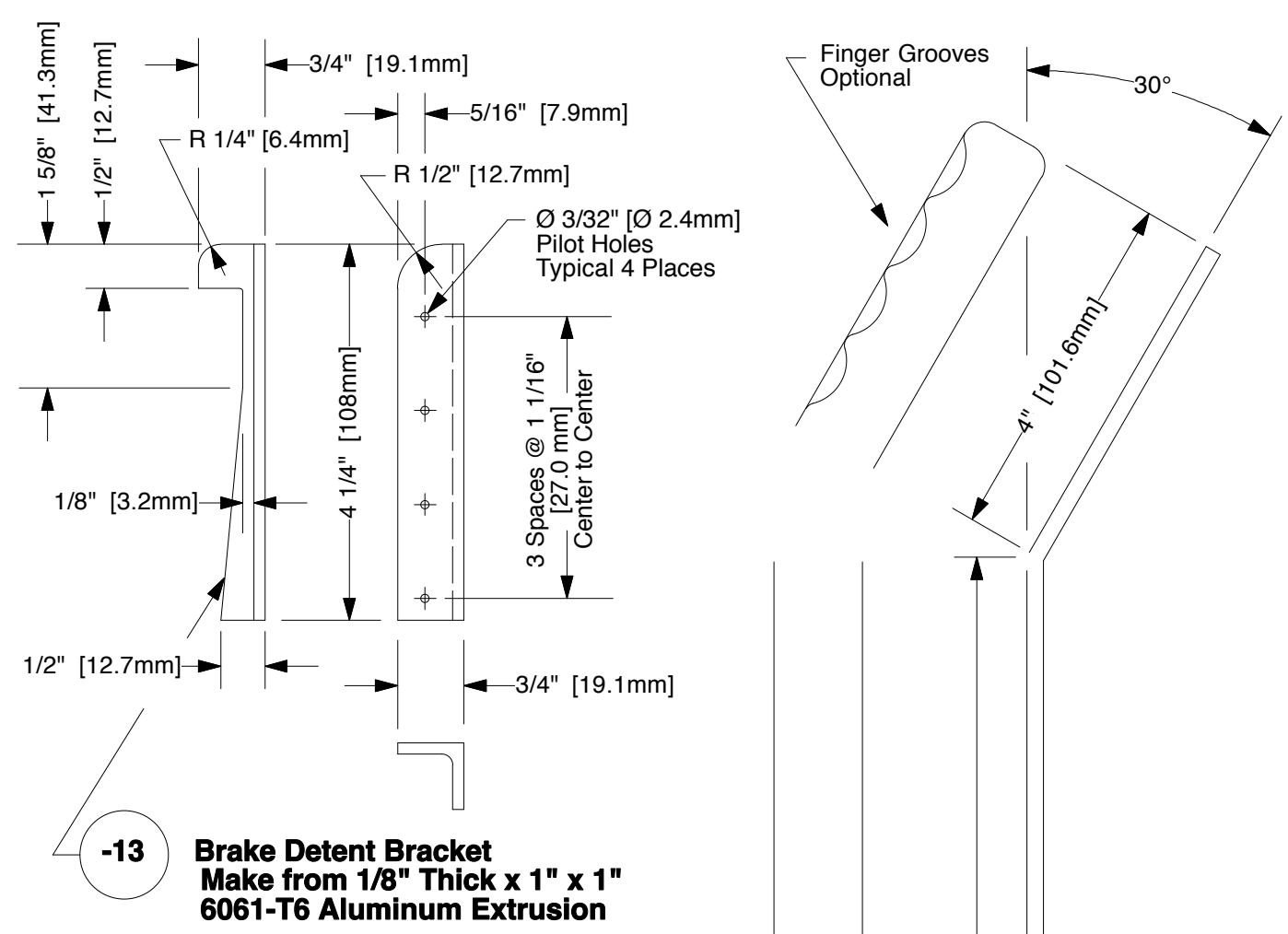


The information disclosed herein is the property of the originator who reserves all patent, design, proprietary, manufacturing, use and sales rights thereto, except for the rights expressly granted to others. This document shall not be reproduced nor shall the information contained within be used by or disclosed to others except as expressly authorized by the originator.

Revision Letter	Change Description
A	Replaced C09-11 Flap and Brake Mount with C09-19 Flap and Brake Mount and C09-10 Support Angle with C09-20 Support Angle Note: C09-11 is still acceptable installed per Rev N/C.



Note: Requirements are for Optional Center Control System See SNX-C08 Drawing for Details

-20	1	Center Support Angle	SNX-C08
-19	1	Flap and Brake Mount Angle	SNX-C08
-18	1	Hinge Pin	SNX-C08
-17	1	Seat Hinge	SNX-C08
-16	1	Flap Detent Assembly	SNX-C08
-14	1	Brake Cable Mount	SNX-C08
-04	1	Throttle Mount Angle	SNX-C08
-03	1	Brake Handle	SNX-C08
-01	1	Flap Handle Assembly	SNX-C08
Dash / Part Number	Qty Req'd	Part Title	Next Assembly

**sonex**  
Optional Dual Center (Sport Trainer) Control System Details

Drawing Scale	Drawing Number	Revision
1/16" & Noted	SNX-C09	A