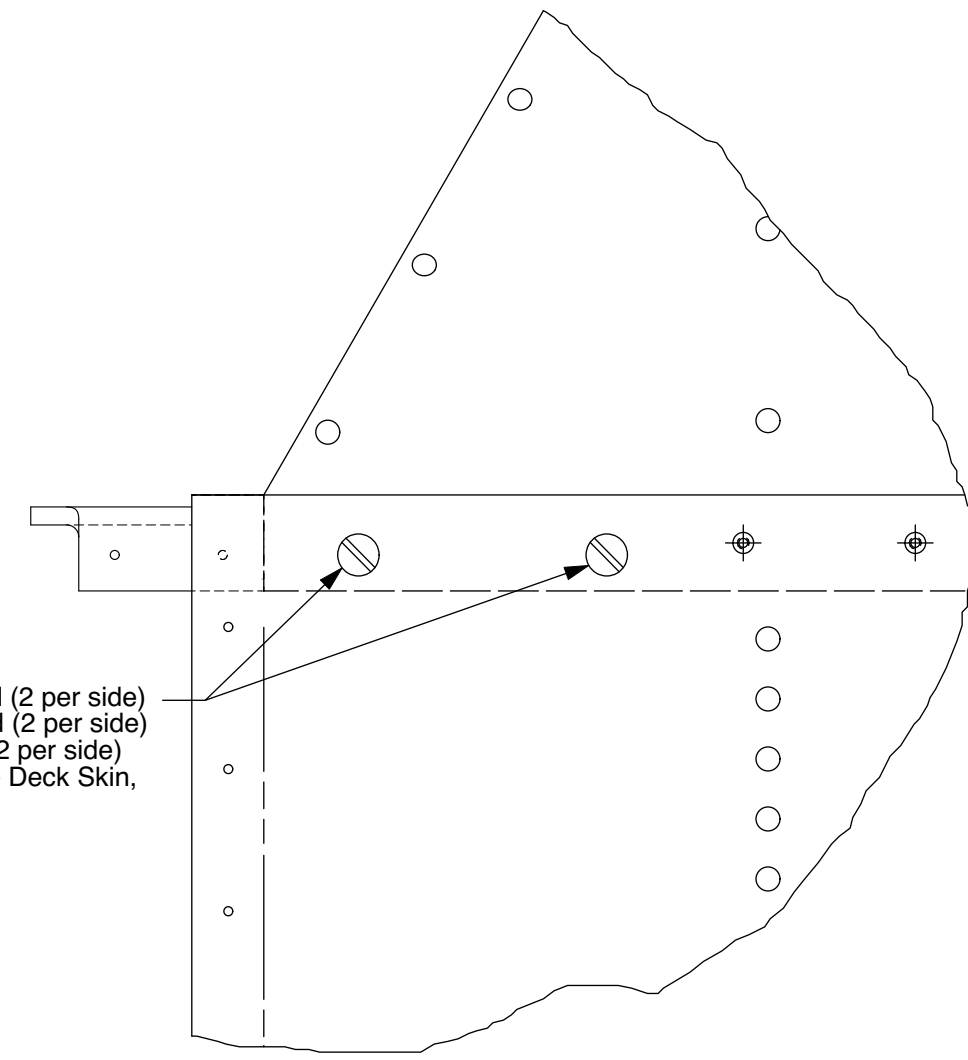


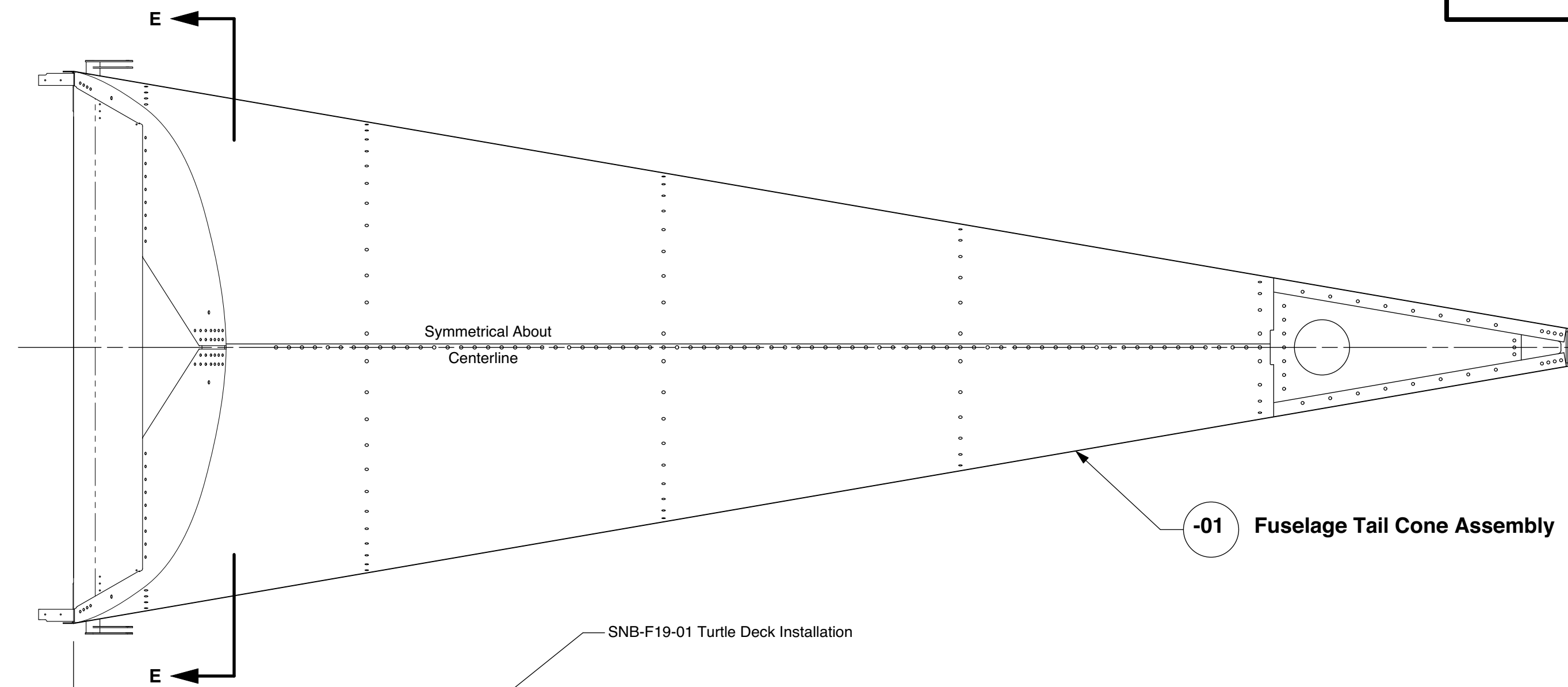
The information disclosed herein is the property of the originator who reserves all patent, design, proprietary, manufacturing, use and sales rights thereto, except for the rights expressly granted to others. This document shall not be reproduced nor shall the information contained within be used by or disclosed to others except as expressly authorized by the originator.

Revision Letter	Change Description	08/24/16
A	Changed AN525-10R12 bolts through splices and forward lower mount angle to AN525-10R11, and added AN960-10 Washers.	02/10/21
B	Changed from SNB-F18-02L/R flap actuator mounts to SNB-F18-03L/R feedback actuator mounts for use with feedback-type actuators equipped with potentiometers.	02/12/21
C	Added Notes to View E-E and Detail F to Back-Rivet Actuator Mounts From Interior of Cross-Tie Box.	02/15/21
D	Detail A: AN525-10R12 Bolt was AN525-10R11.	12/19/22
E	Changed from SNB-F18-03L/R flap actuator mounts to SNB-F18-04L/R actuator mounts for use with SNB-C05-11 Flap Actuators, shipped for kits beginning in 2022. Eliminated View E-E, Detail F, and Detail G.	

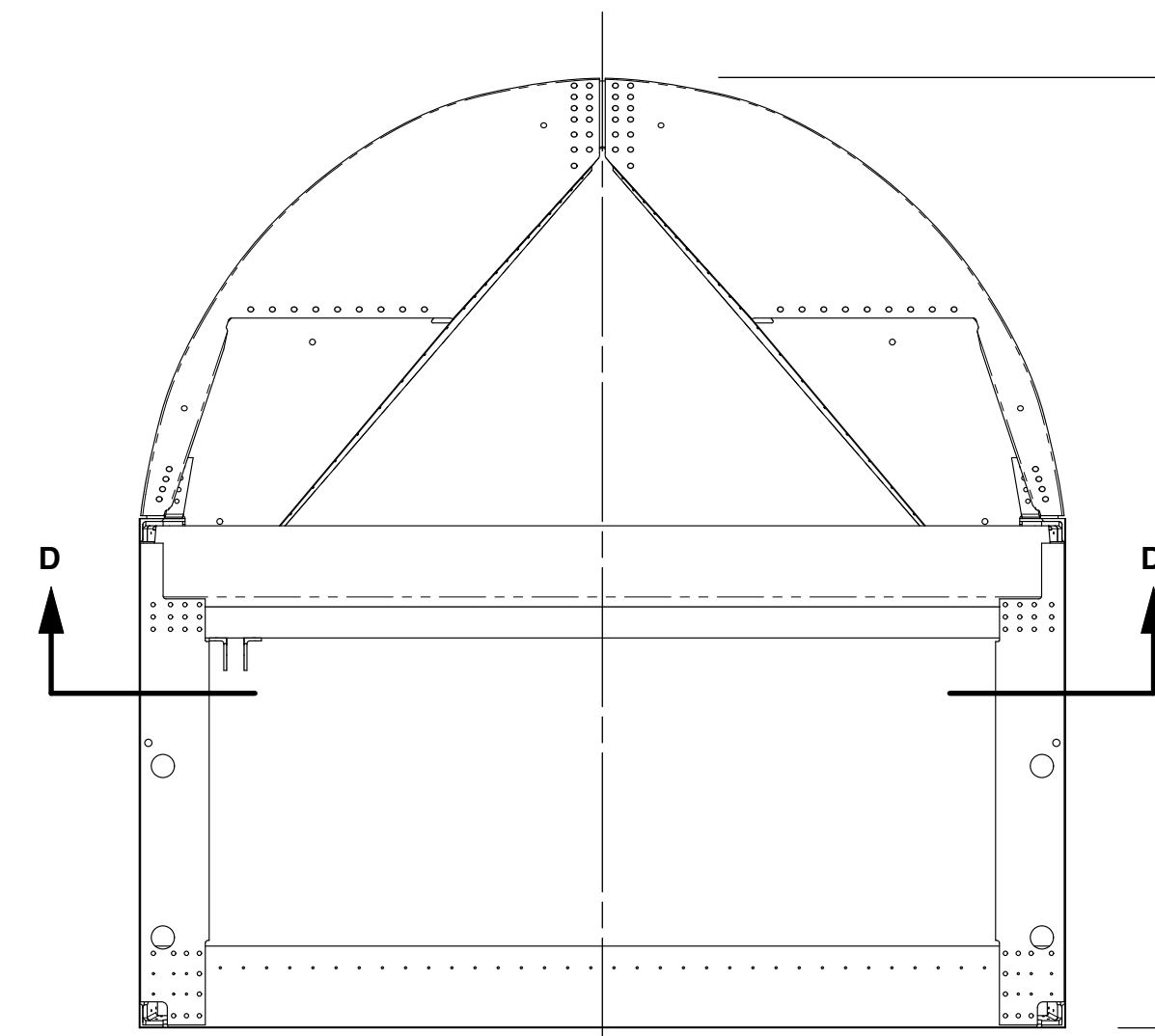
AN525-10R12 Bolt, 4 Required (2 per side)
AN960-10 Washers, 4 Required (2 per side)
AN365-1032 Nut, 4 Required (2 per side)
Thru Fuselage Side Skin, Turtle Deck Skin, Longerons and Splice Plate.



Detail A
Scale: 1/2
Typical Right and Left Sides

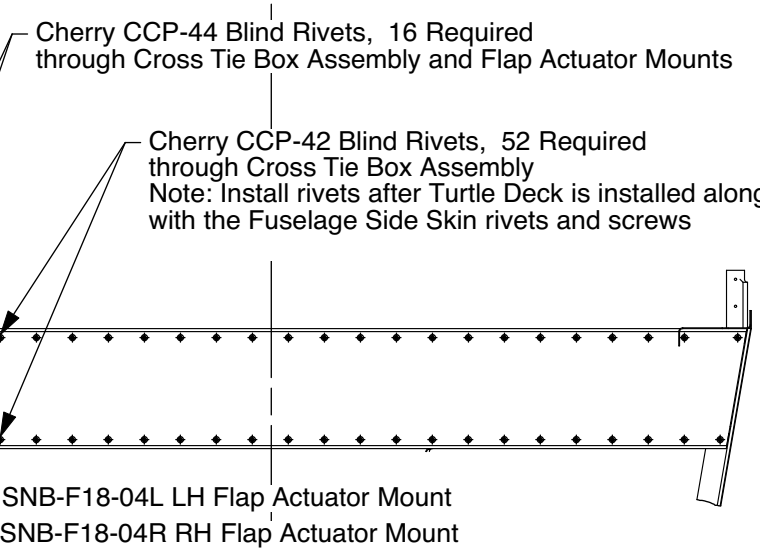


-01 Fuselage Tail Cone Assembly



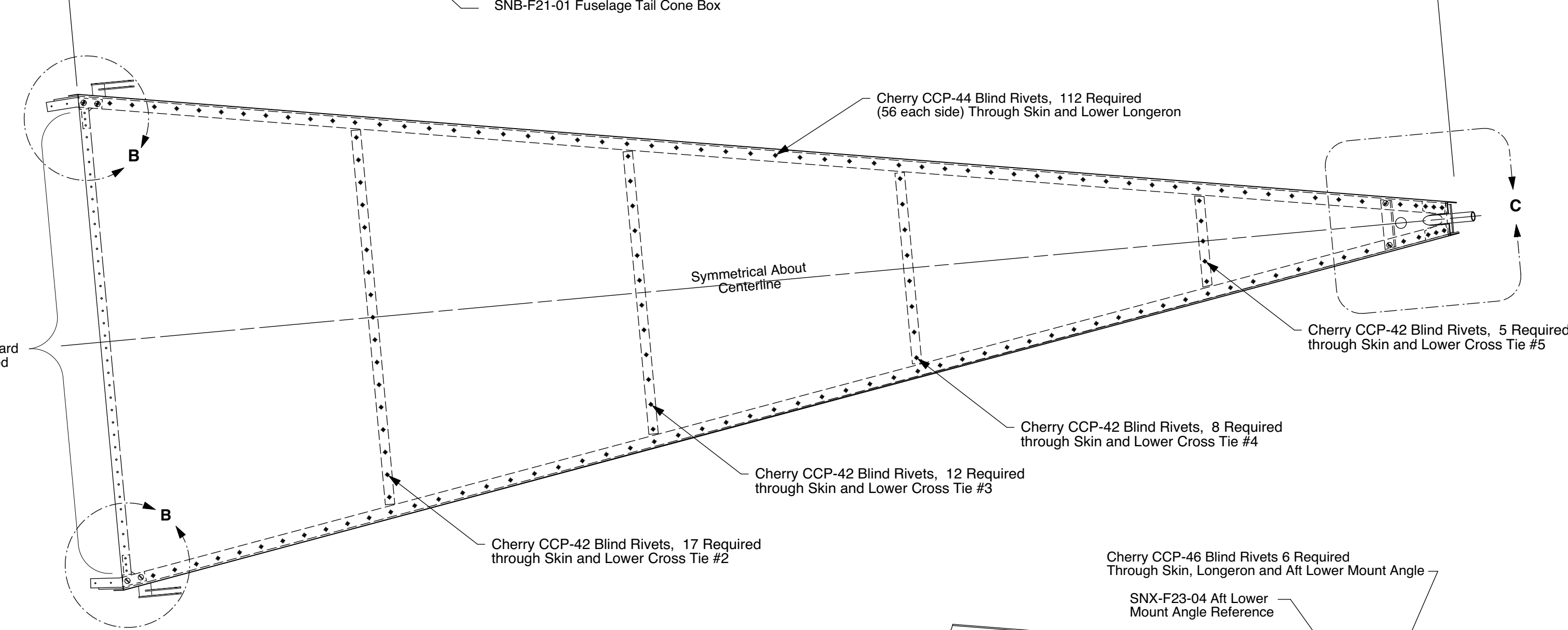
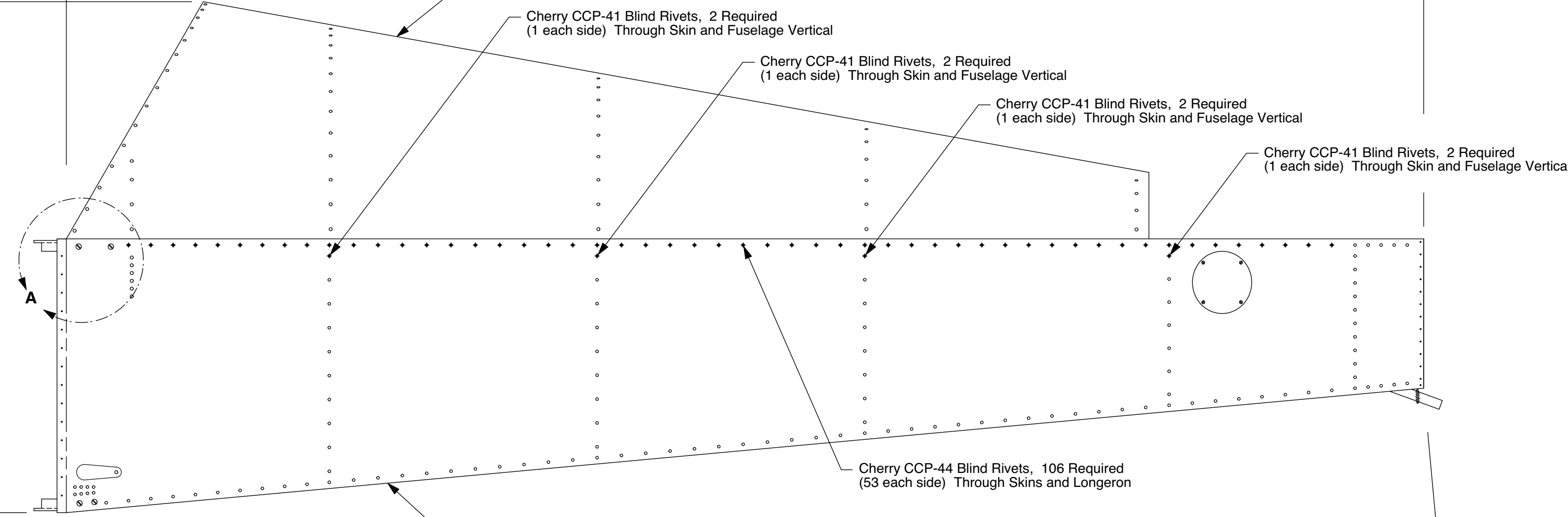
View D-D
View Looking Up at Cross Tie Box
Reference SNB-F24 and SNB-F21 Drawings

SNB-F18-04L
LH Flap Actuator Mount (shown)
SNB-F18-04R
RH Flap Actuator Mount (Opposite -02L)

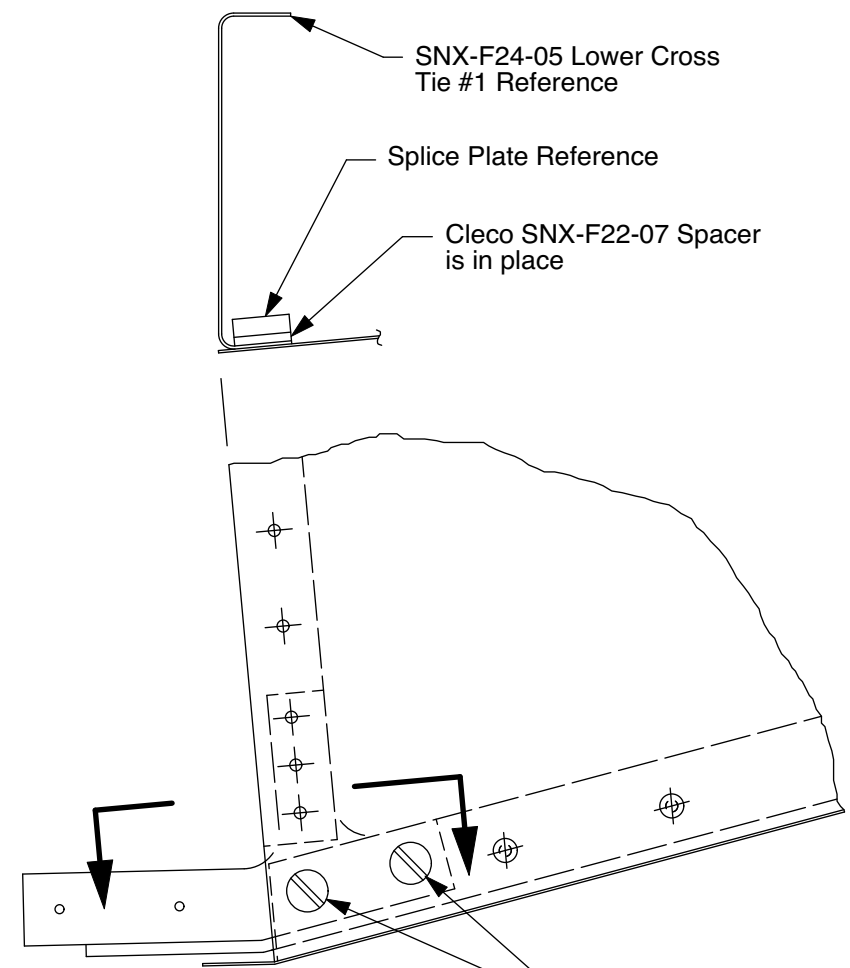


Cherry CCP-44 Blind Rivets, 16 Required through Cross Tie Box Assembly and Flap Actuator Mounts
Cherry CCP-42 Blind Rivets, 52 Required through Cross Tie Box Assembly
Note: Install rivets after Turtle Deck is installed along with the Fuselage Side Skin rivets and screws

Rivets / Screws along forward edge of Lower Skin installed on later assembly

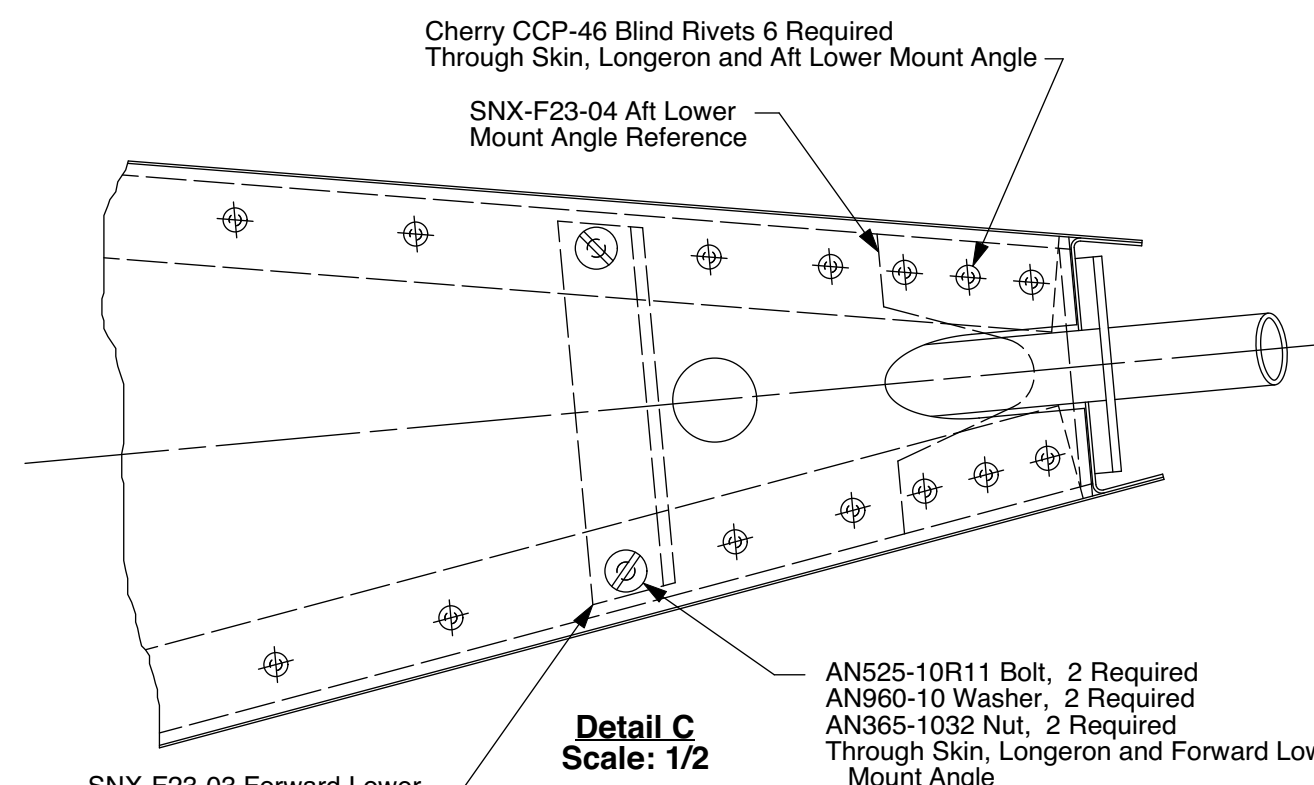


Note: Install rivets and screws in Lower Skin after Turtle Deck is installed
Note: The installation of the Rivets through the Lower Aft Fuselage Skin may be delayed until the Airplane final assembly to provide the maximum access into the Aft Fuselage Tail Cone



Detail B
Scale: 1/2
Typical Right and Left Sides

AN525-10R11 Bolt, 4 Required (2 per side)
AN960-10 Washer, 4 Required (2 per side)
AN365-1032 Nut, 4 Required (2 per side)
Through Skin, Longerons and Splice Plate



Detail C
Scale: 1/2

SNB-F18-01	1	Fuselage Tail Cone Assembly	SNB-F11
Part / Ass'y Number	Qty. Req'd	Part Title	Next Assembly

sonex-B
Fuselage Tail Cone Assembly

Drawing Scale	Drawing Number	Revision
1/8 & Noted	SNB-F18	E