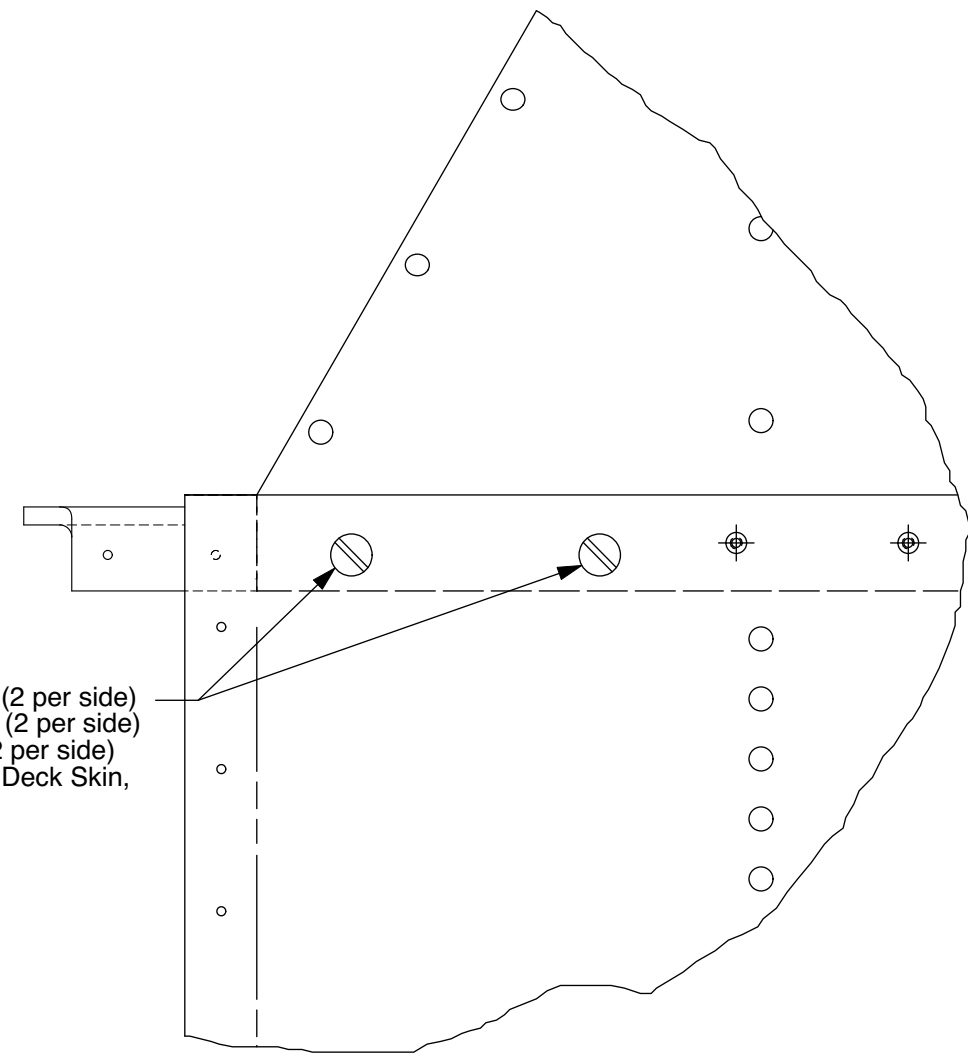


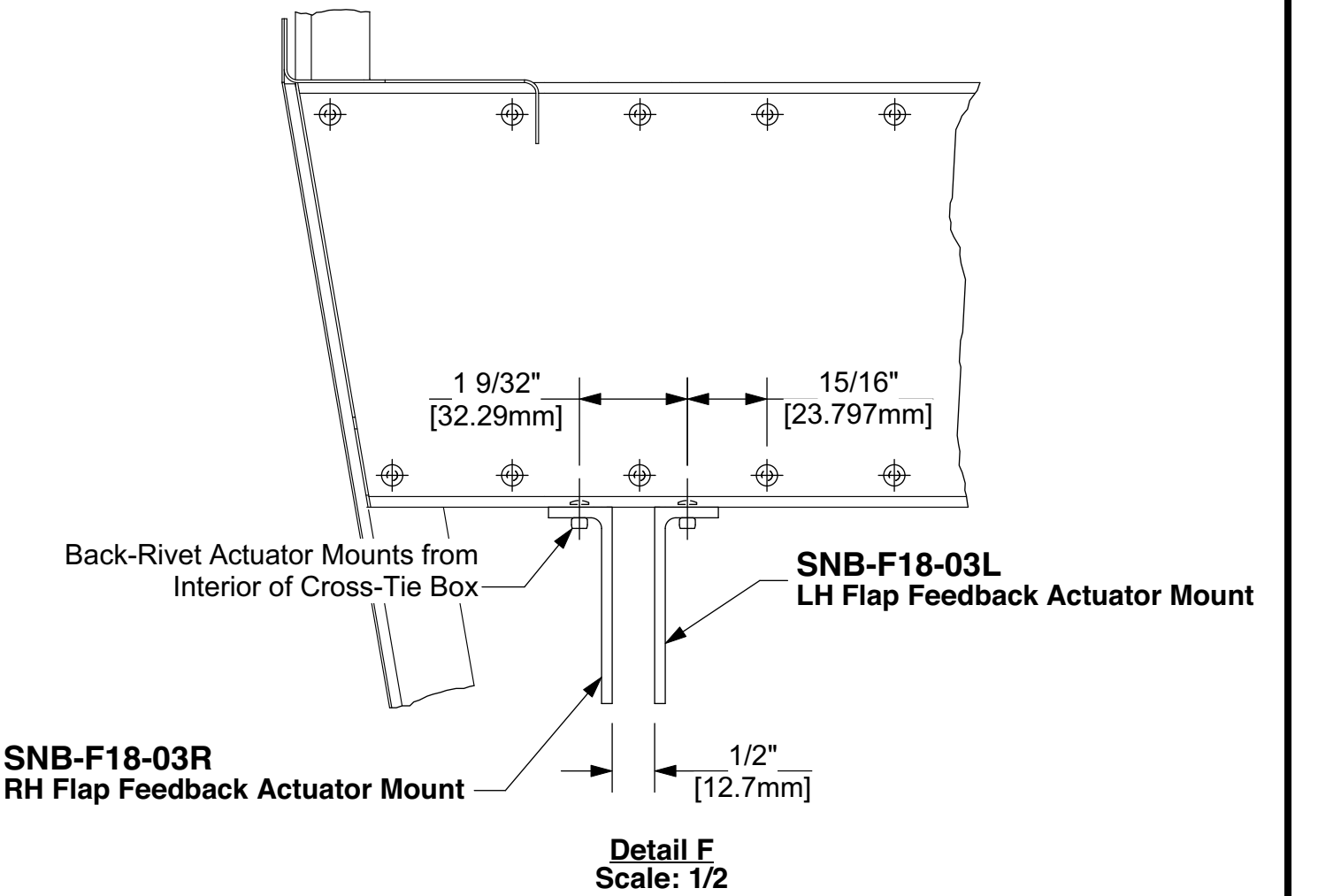
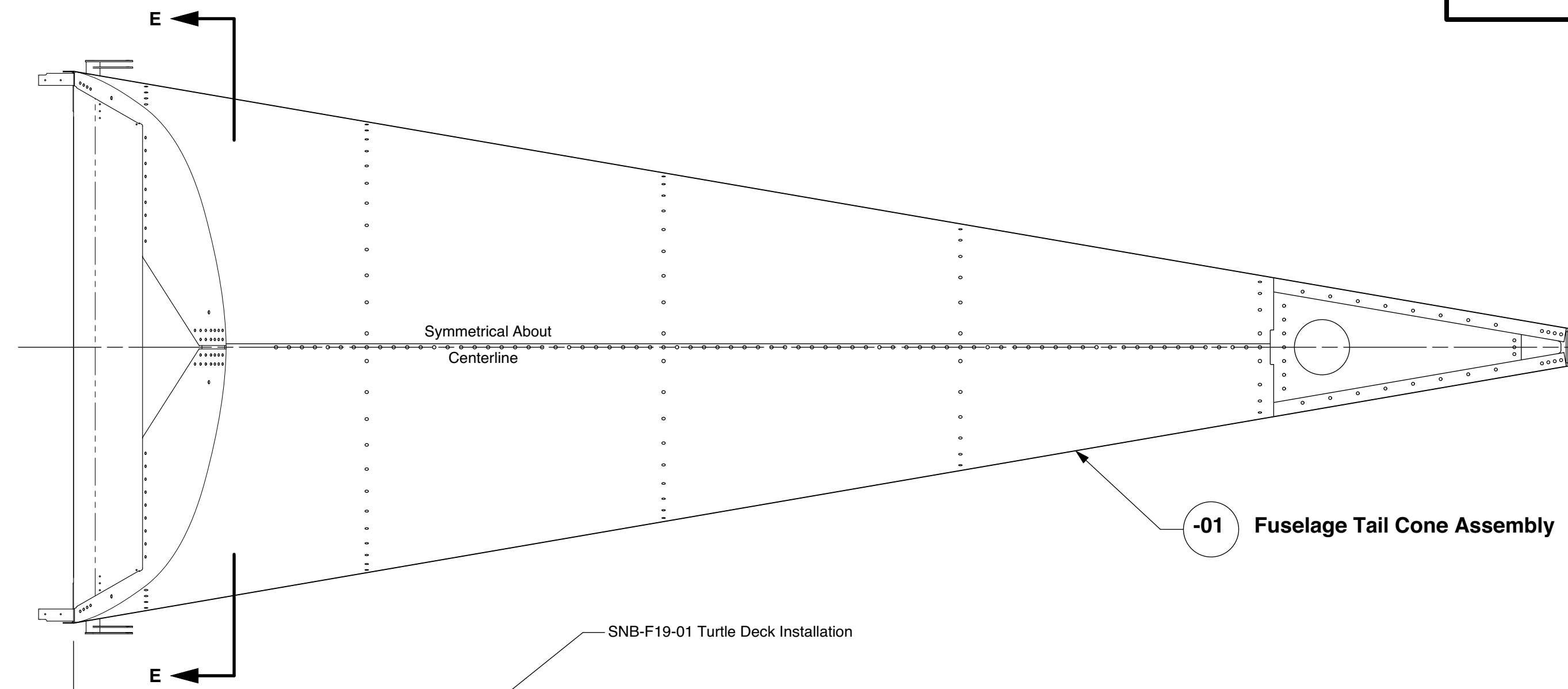
The information disclosed herein is the property of the originator who reserves all patent, design, proprietary, manufacturing, use and sales rights thereto, except for the rights expressly granted to others. This document shall not be reproduced nor shall the information contained within be used by or disclosed to others except as expressly authorized by the originator.

Revision Letter	Change Description	08/24/16
A	Changed AN525-10R12 bolts through splices and forward lower mount angle to AN525-10R11, and added AN960-10 Washers.	02/10/21
B	Changed from SNB-F18-02L/R flap actuator mounts to SNB-F18-03L/R feedback actuator mounts for use with feedback-type actuators equipped with potentiometers.	02/12/21
C	Added Notes to View E-E and Detail F to Back-Rivet Actuator Mounts From Interior of Cross-Tie Box.	

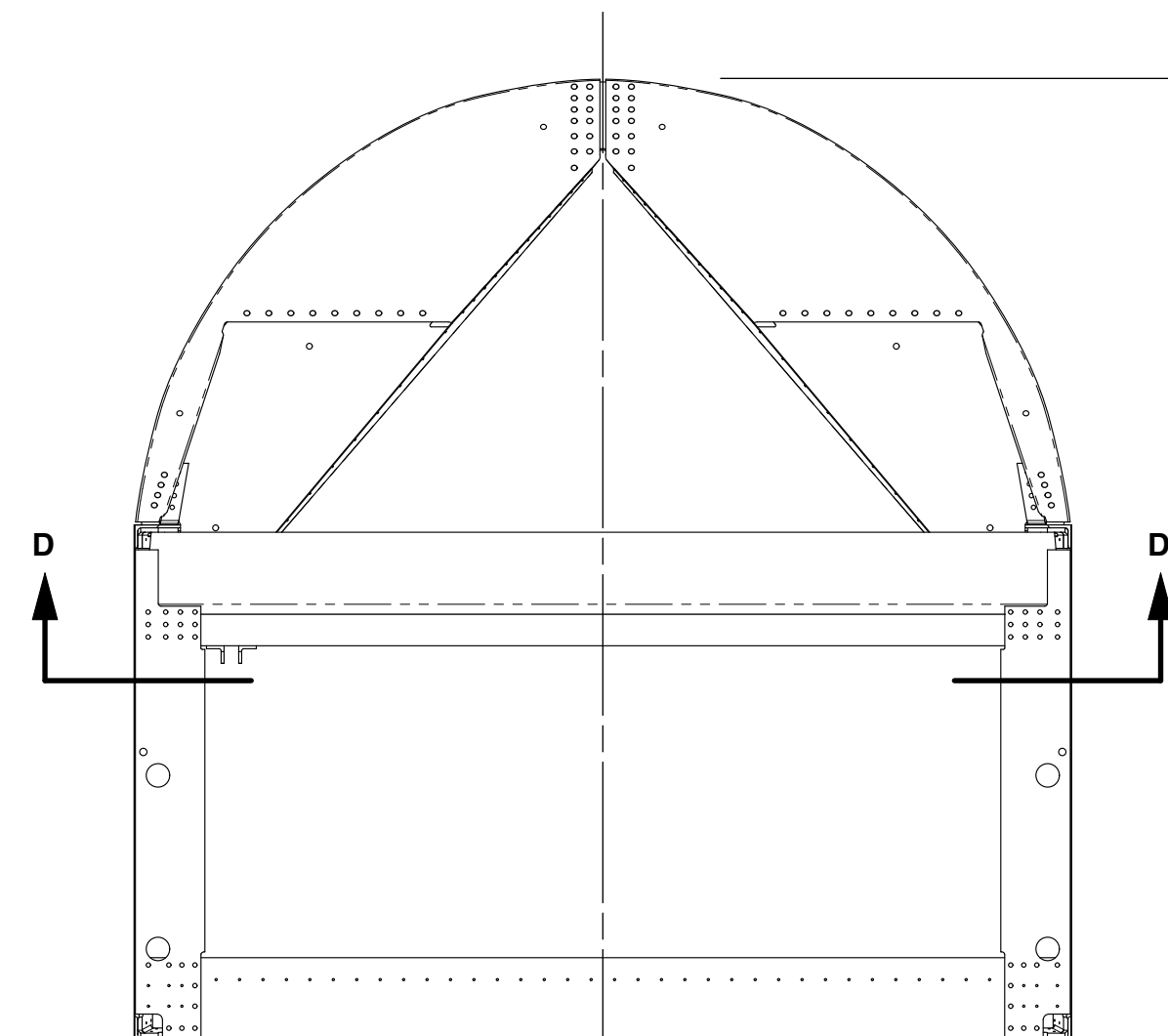
AN525-10R11 Bolt, 4 Required (2 per side)
 AN960-10 Washers, 4 Required (2 per side)
 AN365-1032 Nut, 4 Required (2 per side)
 Thru Fuselage Side Skin, Turtle Deck Skin, Longerons and Splice Plate.



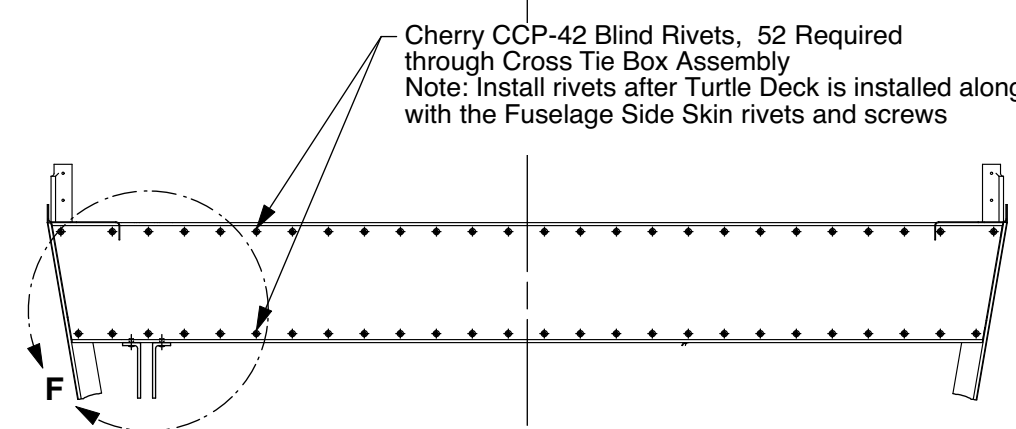
Detail A
 Scale: 1/2
 Typical Right and Left Sides



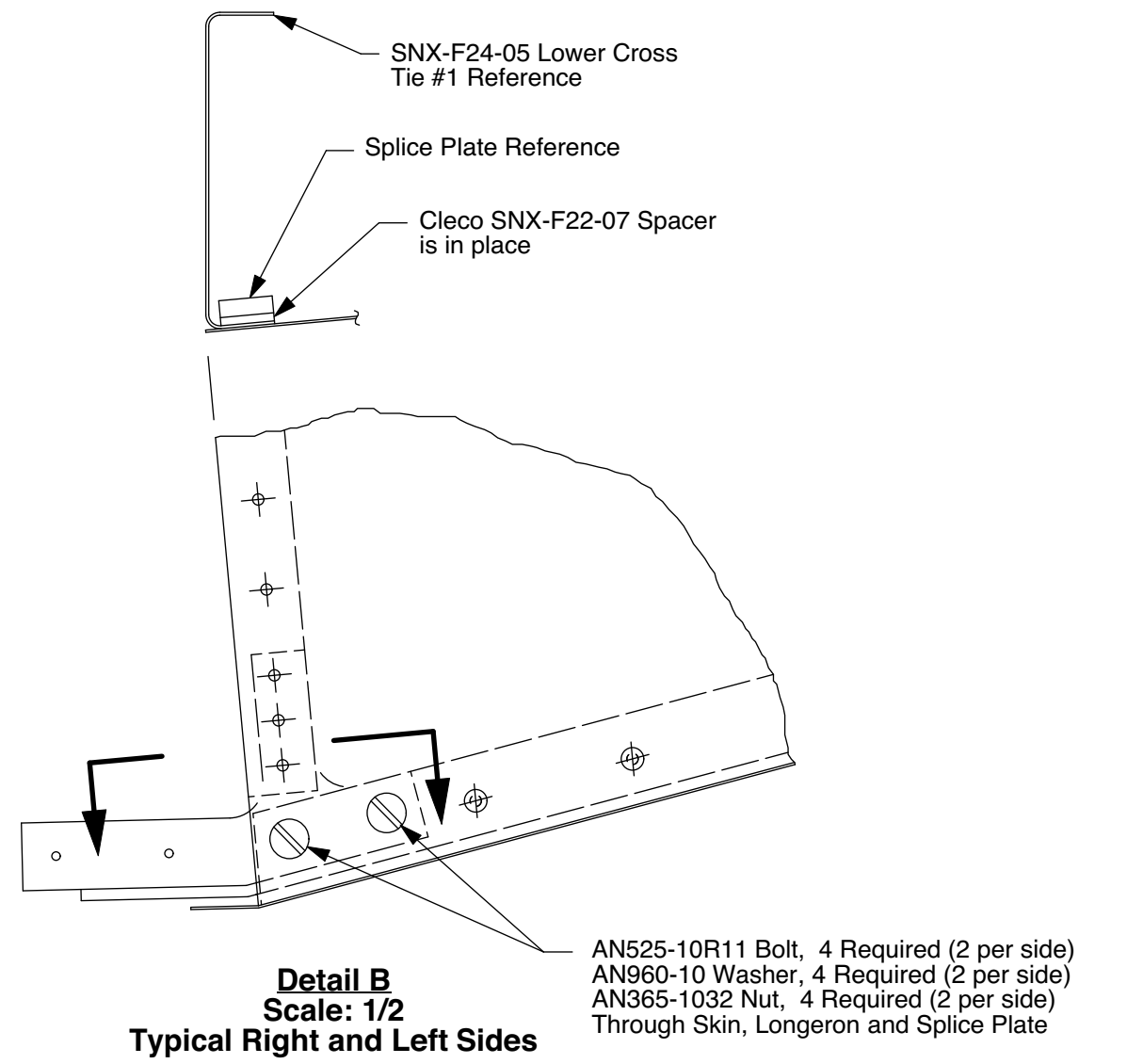
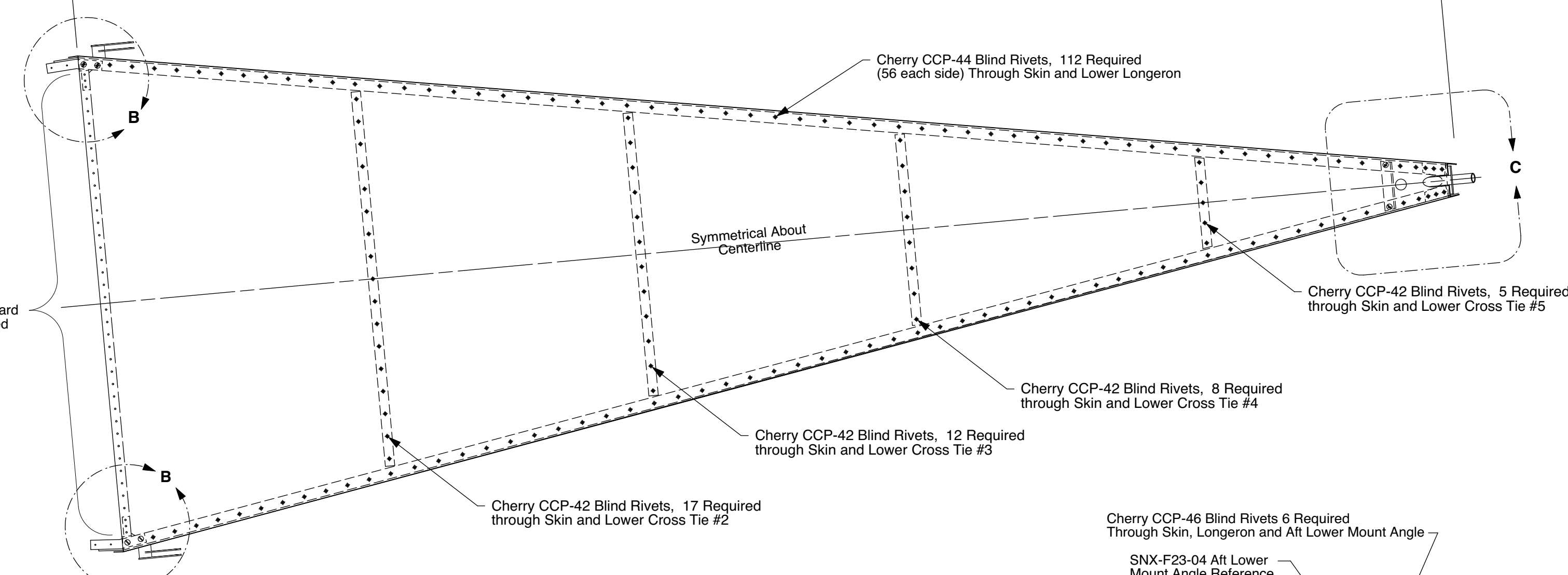
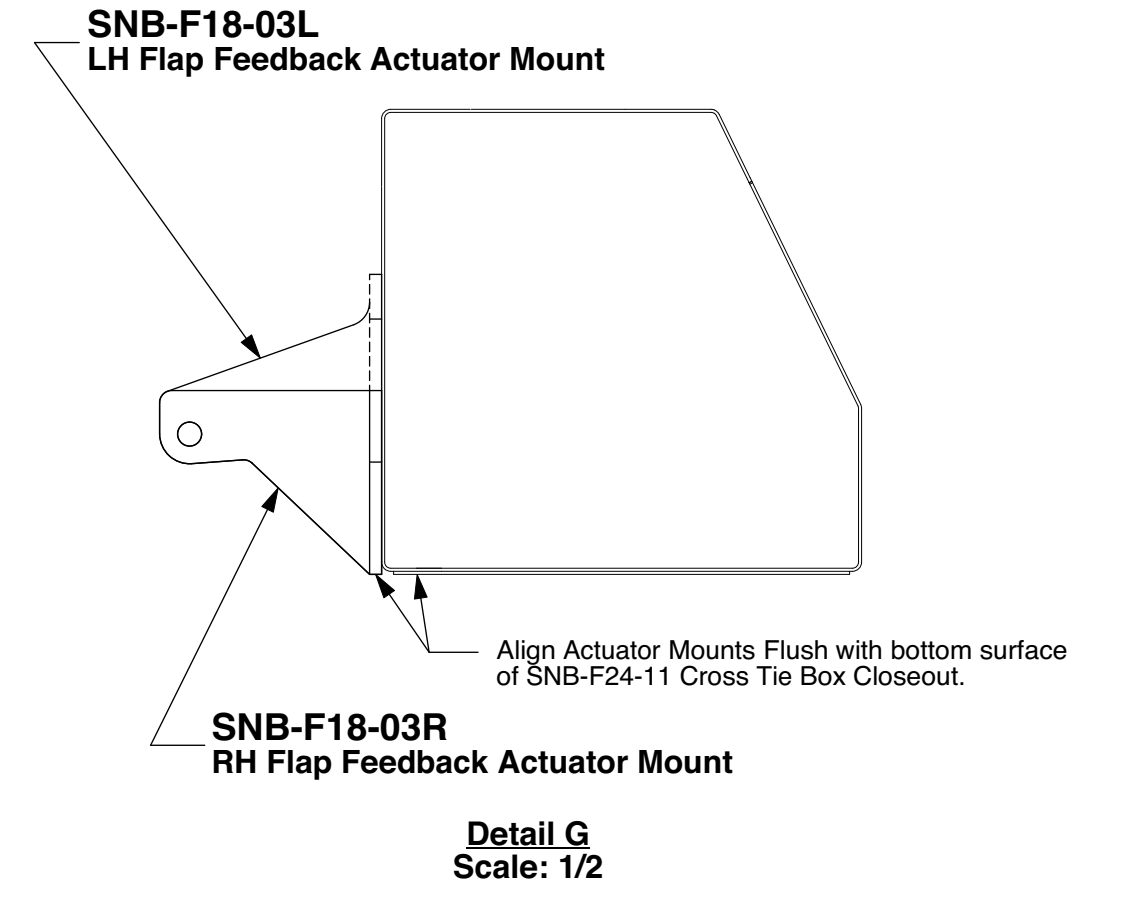
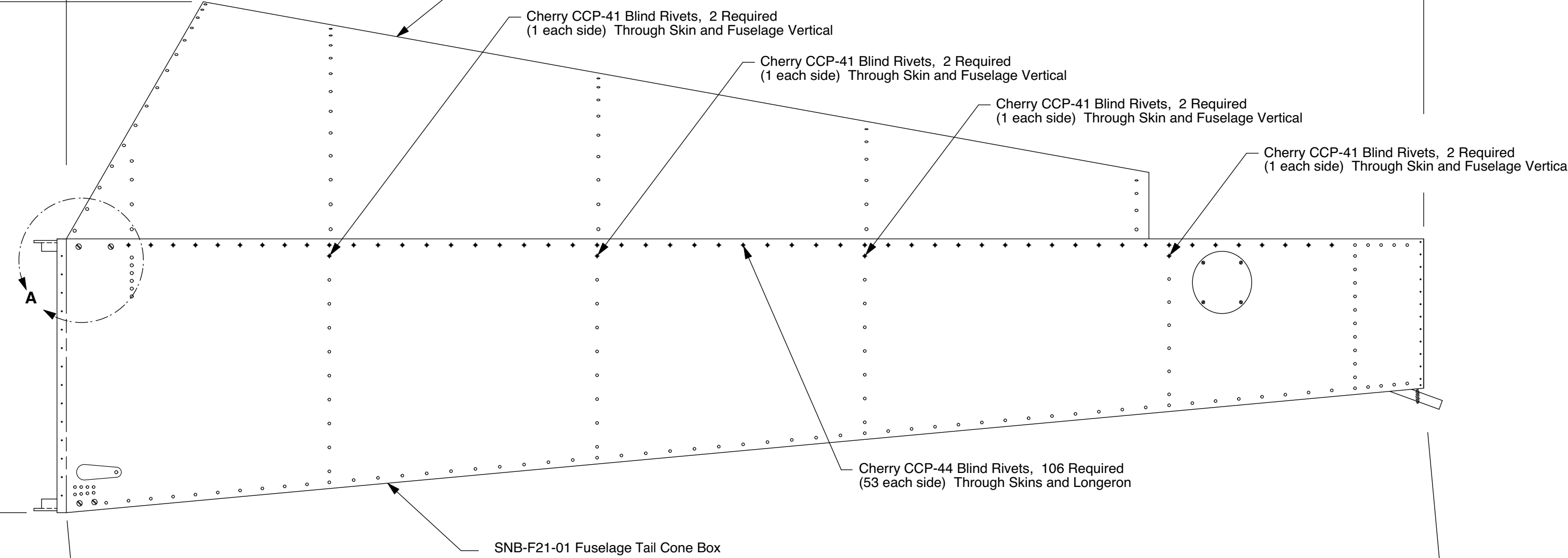
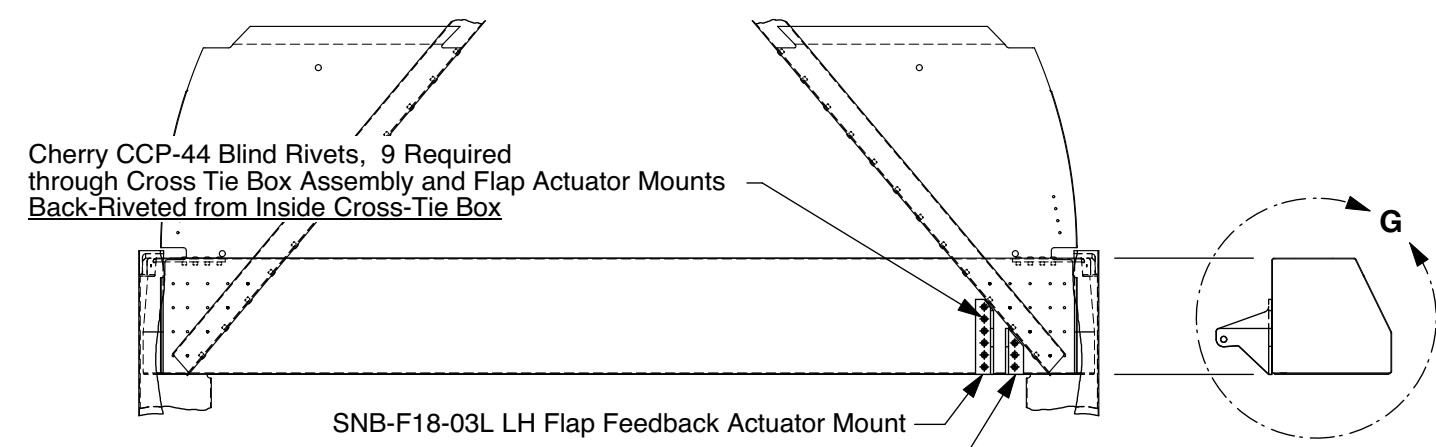
NOTE: Details F and G valid for SNB-C05-10 Feedback-Type Actuator Only (actuator with potentiometer to sense actuator position). Reference Revision A of drawing SNB-F18 for installation of the non-feedback actuator supplied with earlier kits.



View D-D
 View Looking Up at Cross Tie Box
 Reference SNB-F24 and SNB-F21 Drawings

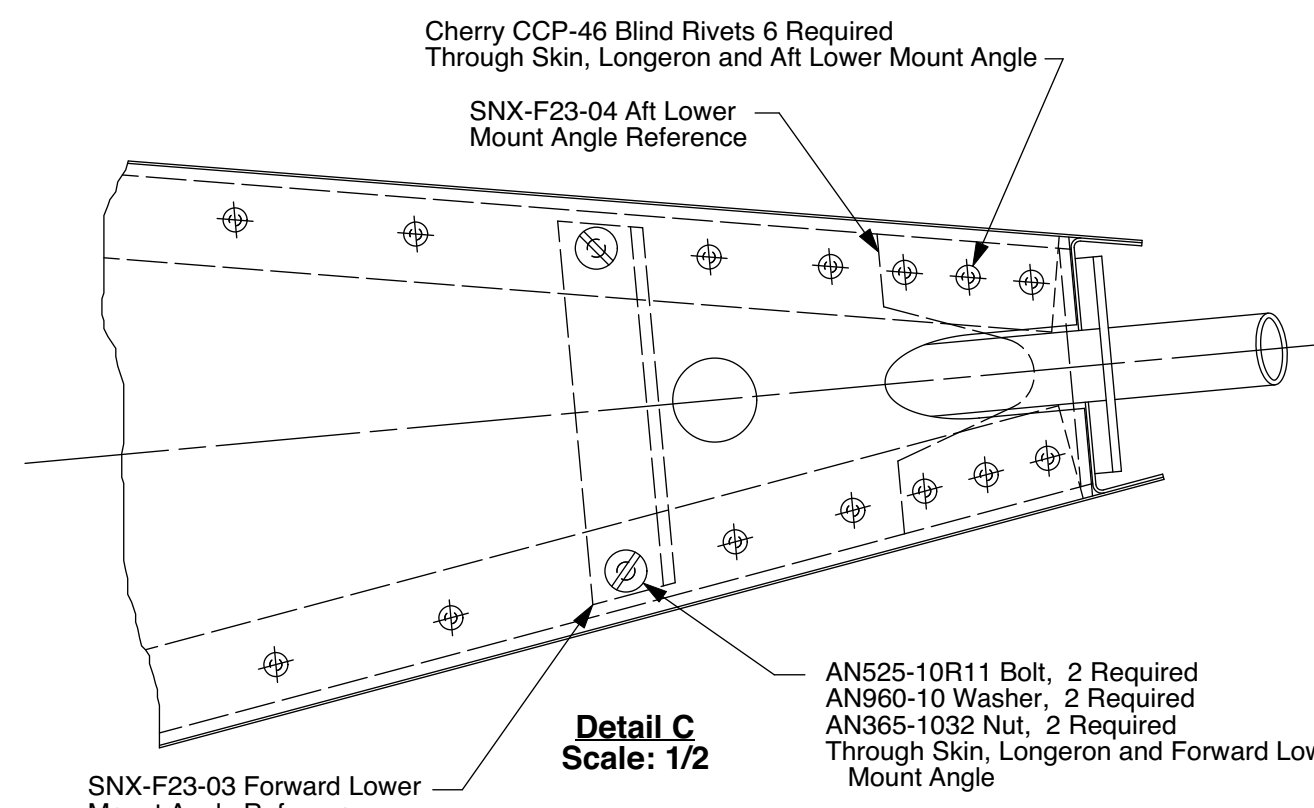


View E-E
 View Looking Forward at Cross Tie Box
 Reference SNB-F24 and SNB-F21 Drawings



Note: Install rivets and screws in Lower Skin after Turtle Deck is installed

Note: The installation of the Rivets through the Lower Aft Fuselage Skin may be delayed until the Airplane final assembly to provide the maximum access into the Aft Fuselage Tail Cone



Part / Ass'y Number	Qty. Req'd	Part Title	SNB-F11 Next Assembly
SNB-F18-01	1	Fuselage Tail Cone Assembly	SNB-F11

sonex-B
Fuselage Tail Cone Assembly

Drawing Scale 1/8 & Noted	Drawing Number SNB-F18	Revision C
------------------------------	---------------------------	---------------