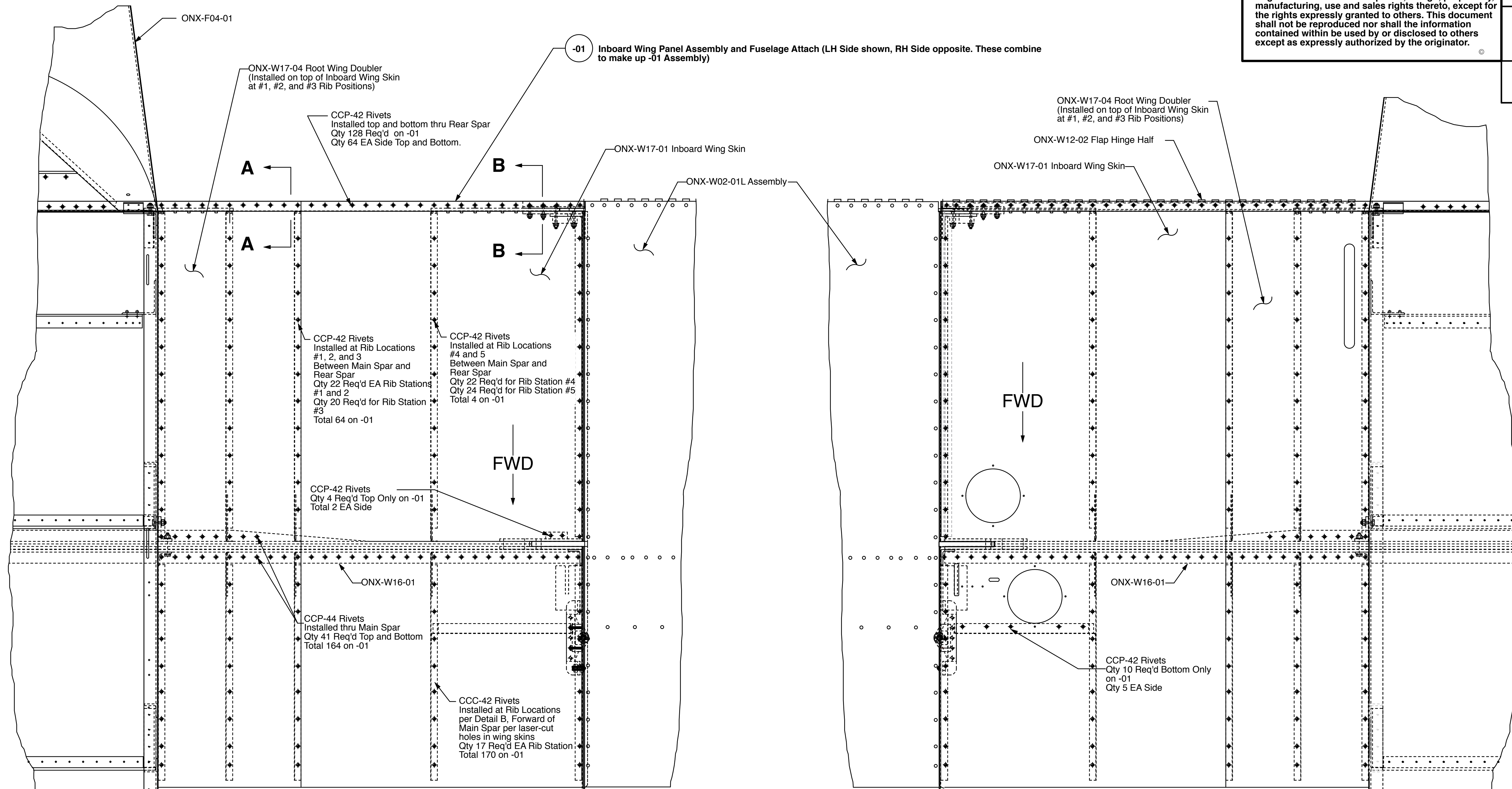


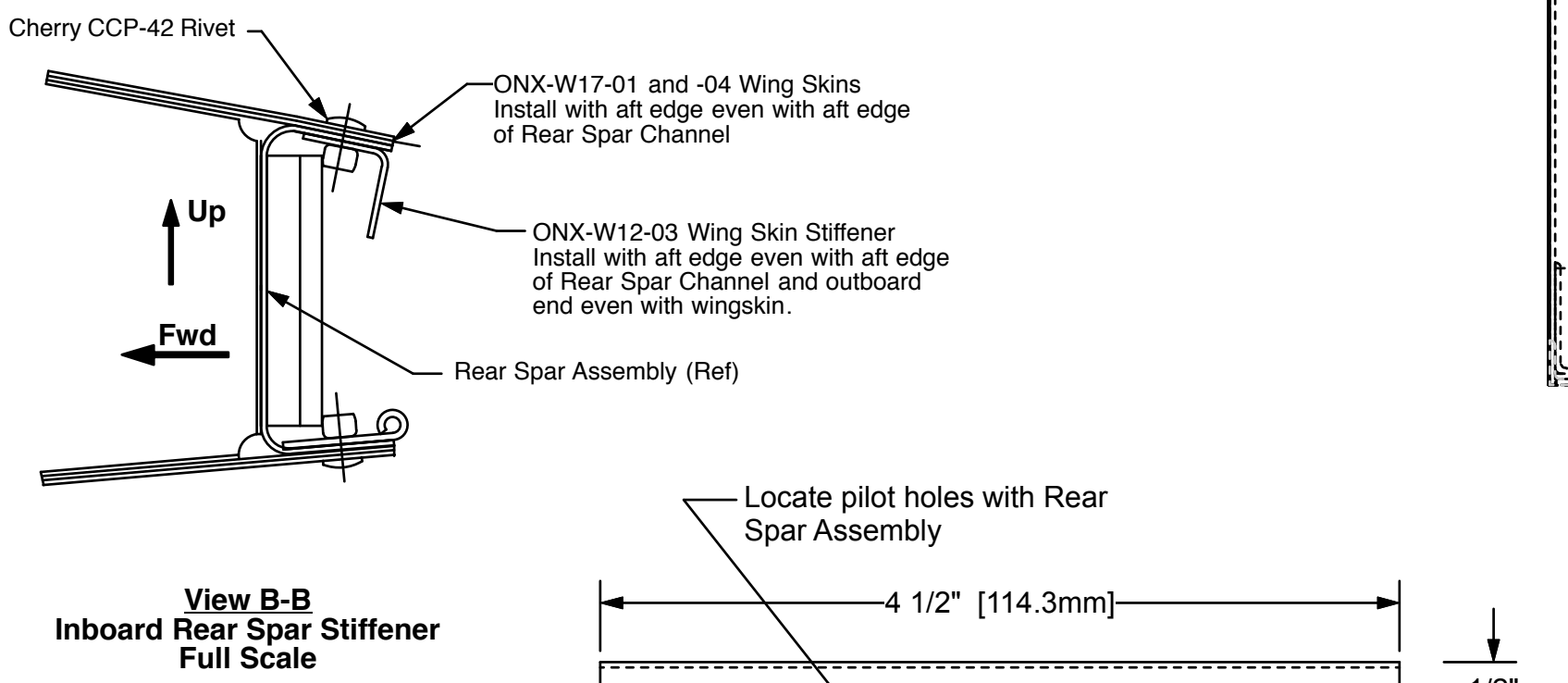
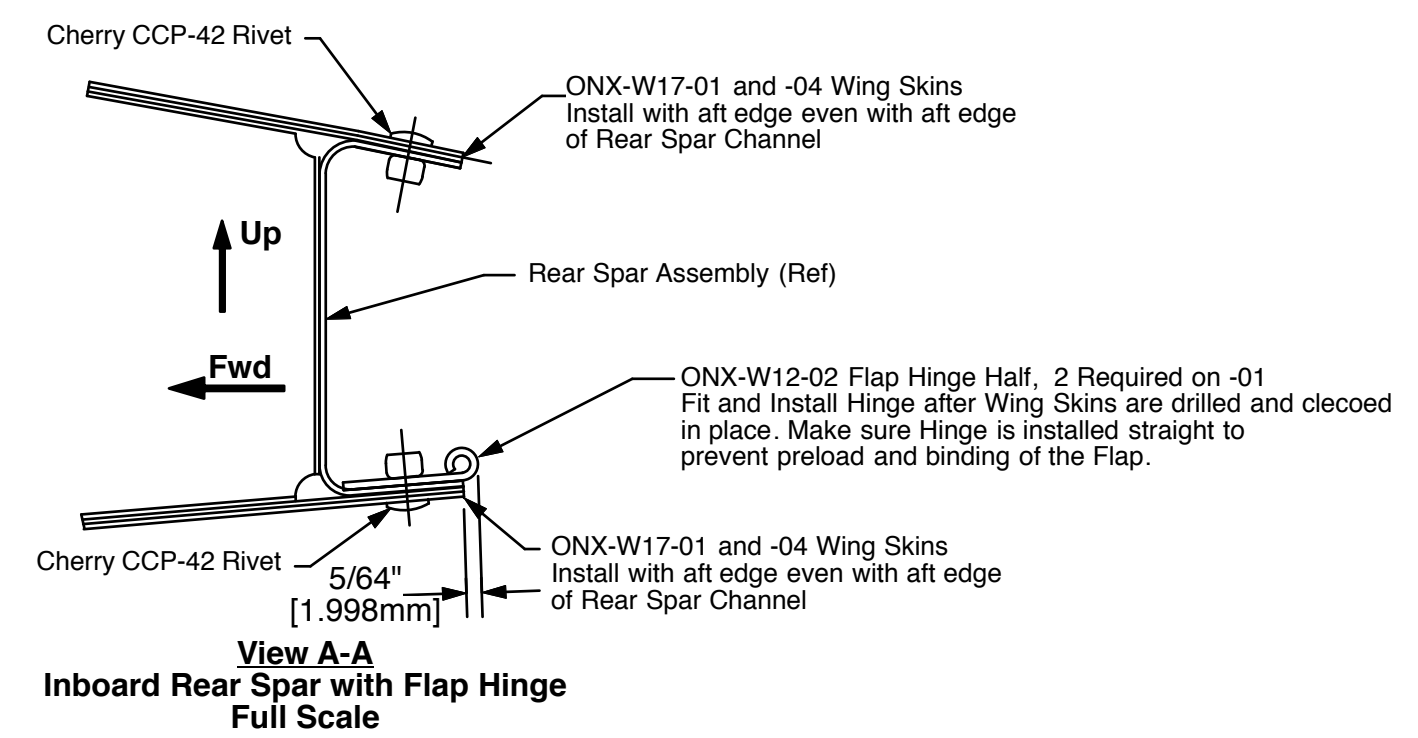
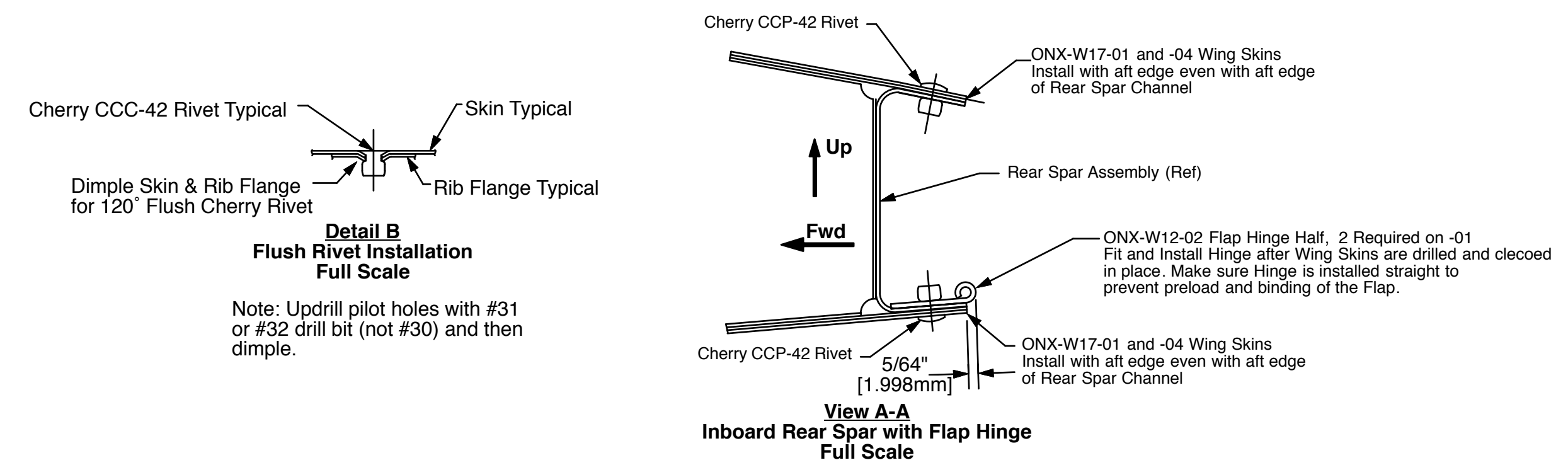
The information disclosed herein is the property of the originator who reserves all patent, design, proprietary, manufacturing, use and sales rights thereto, except for the rights expressly granted to others. This document shall not be reproduced nor shall the information contained within be used by or disclosed to others except as expressly authorized by the originator.

| Revision Letter | Change Description |
|-----------------|---|
| A | Added ONX-W02-01L Outboard Wing Assembly to Top and Bottom views. Both Outboard Wing Assemblies should stay in place through the inboard wing skinning process to ensure proper alignment between inboard and outboard wings. 9.18.14 |
| B | Removed 4 rivets from Skin installation (2 Rivets from Rib #3, and 2 Rivets from Rib #4) Added ONX-W12-03 Wing Skin Stiffener Angle 11.3.17 |

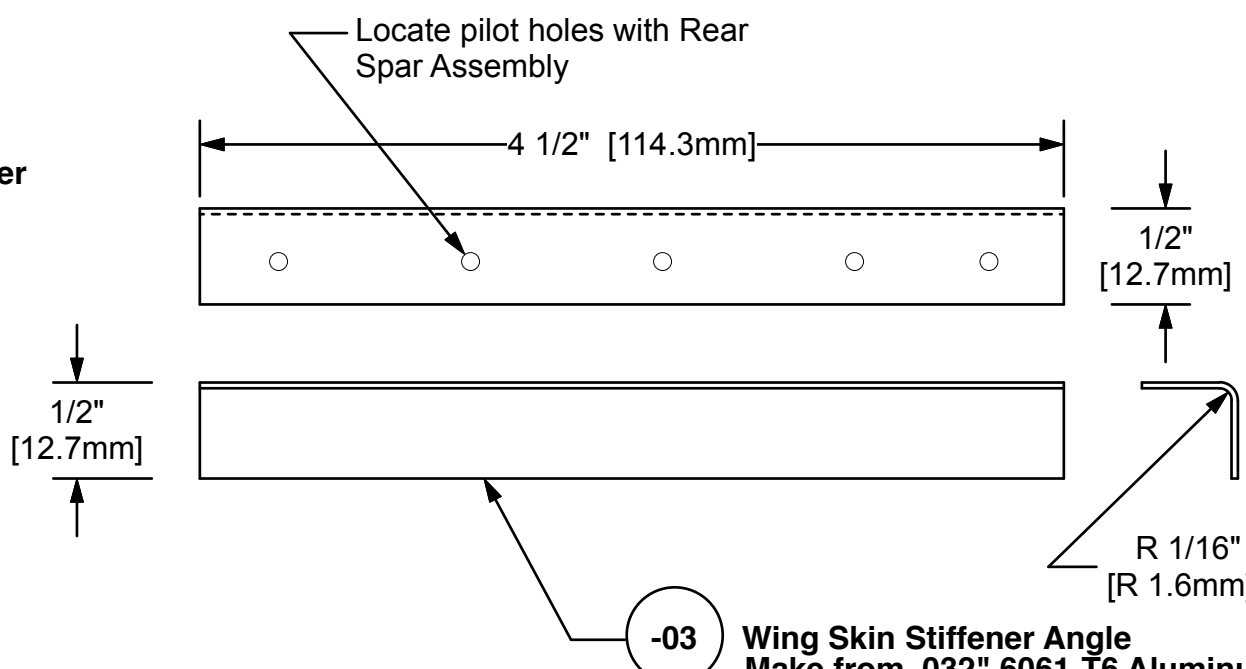
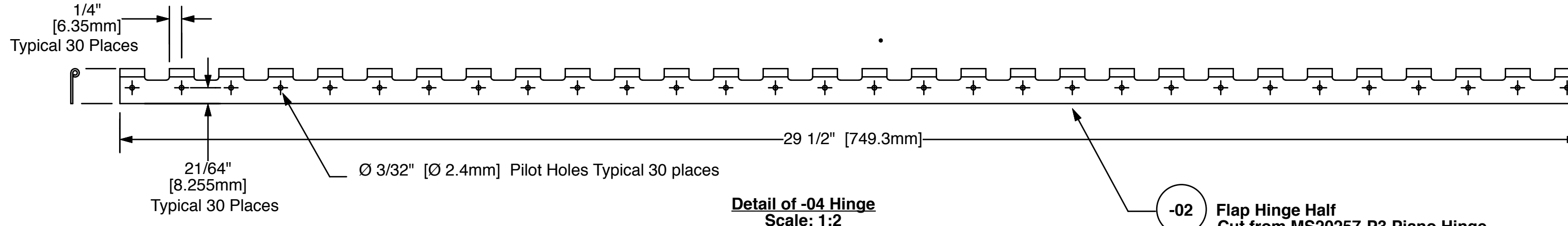


View Looking Down on Inboard Wing Panel

View Looking Up on Inboard Wing Panel



- Note: General Construction Order for -01 Inboard Skinned Wing and Fuselage Assembly
- 1) Mark Blue Centerlines on all wing rib flanges.
 - 2) Attach ONX-W17-01 Inboard Wing Skin to rear spar with clecos.
 - 3) Beginning with the top skin surface, and working from the rear spar forward, center the rib flanges under the pilot holes in the skin, drill #40 (3/32") pilot hole through rib and install a cleco.
 - 4) Repeat step 3 for the lower skin surface.
 - 5) Install ONX-W17-04 Inboard Root Doublers Skin over the top of ONX-W17-01 at the inboard 3 rib locations.
 - 6) Updrill holes to the final size (#30, #31, or #32)
 - 7) Remove wing skin and deburr all holes.
 - 8) Dimple holes which will receive flush rivets
 - 9) Reinstall wing skin with clecos.
 - 10) Install rivets.



-02 Flap Hinge Half
Cut from MS20257-P3 Piano Hinge
Qty 2 req'd per Onex
SCALE 1:2

-03 Wing Skin Stiffener Angle
Make from .032\"/>

| Dash Number | Quantity Required | Part Title | Revision |
|-------------|-------------------|--|---------------|
| -01 | 1 | Inboard Skinned Wing and Fuselage Assembly | ONX-F01 |
| | | | Next Assembly |

onex
Inboard Wing Panel Skinning

| | | |
|---------------|----------------|----------|
| Drawing Scale | Drawing Number | Revision |
| 1:4 & Noted | ONX-W12 | B |