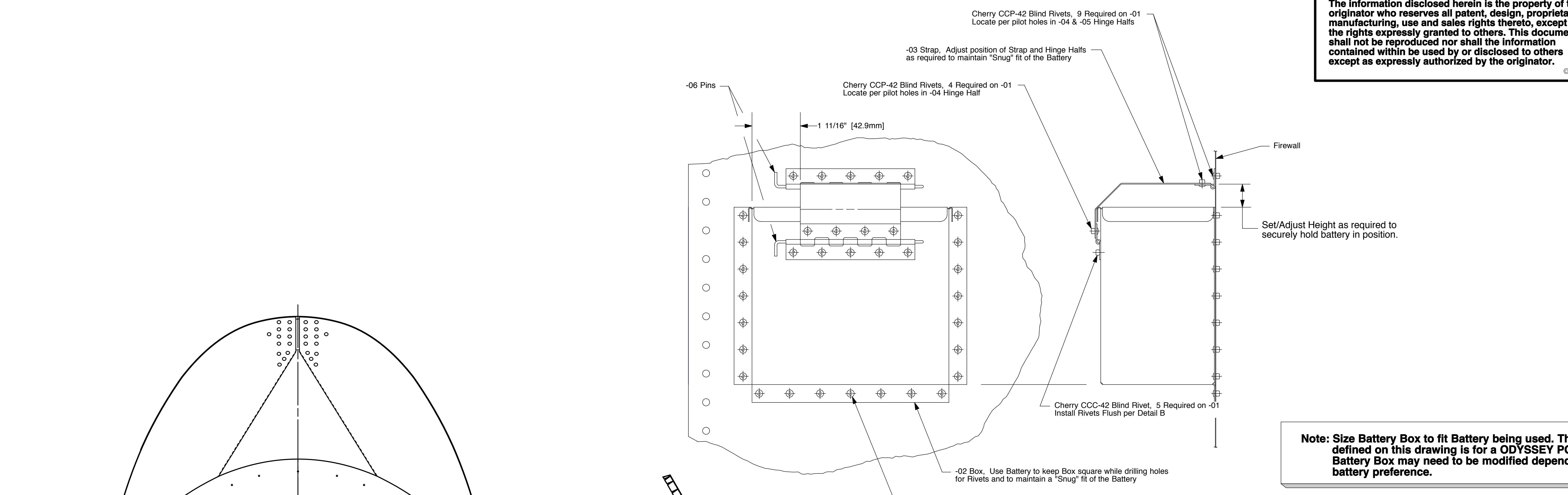
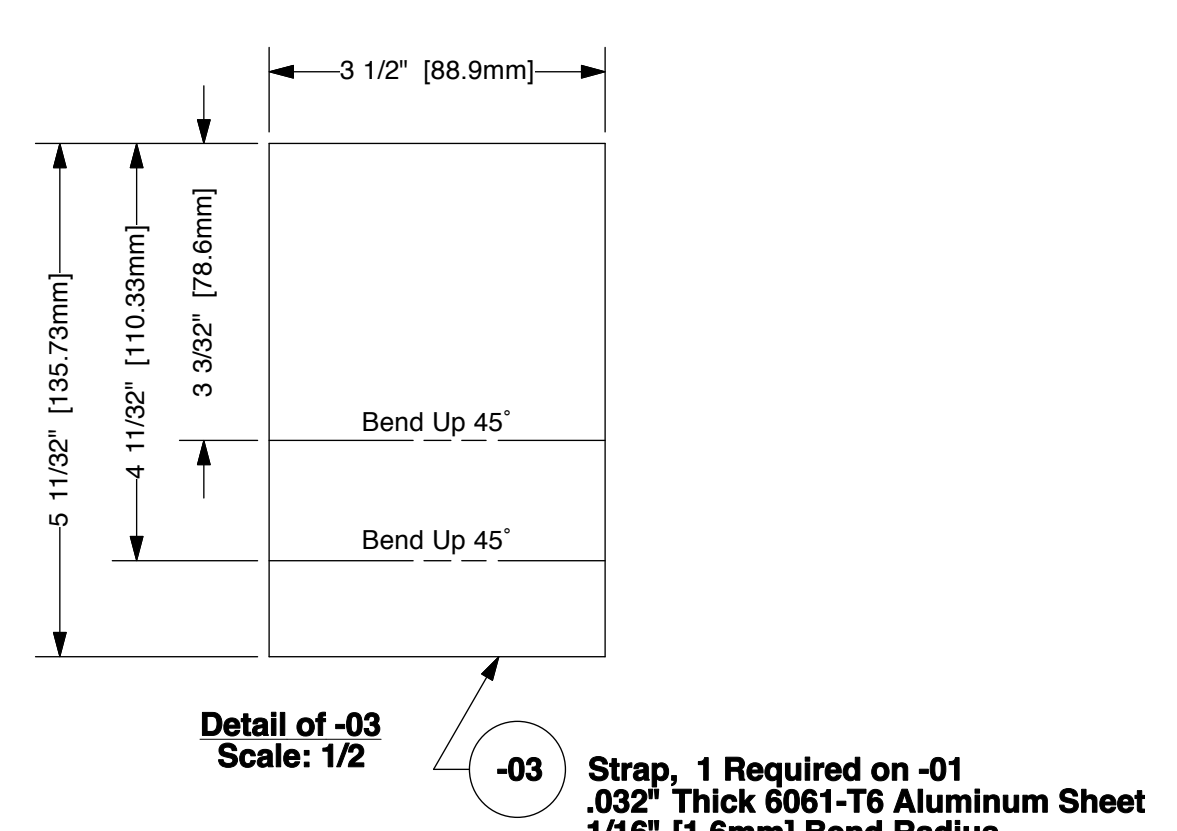
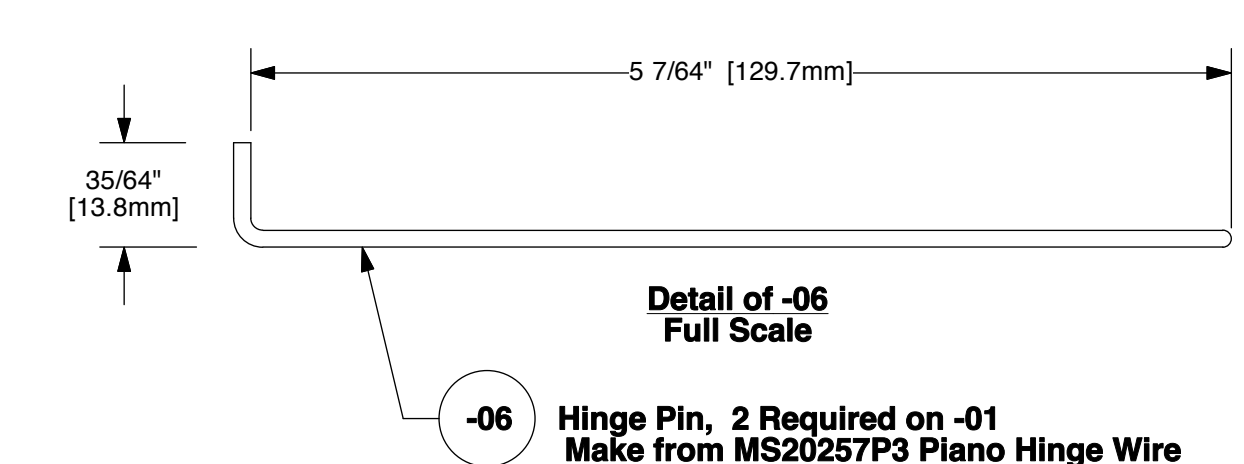
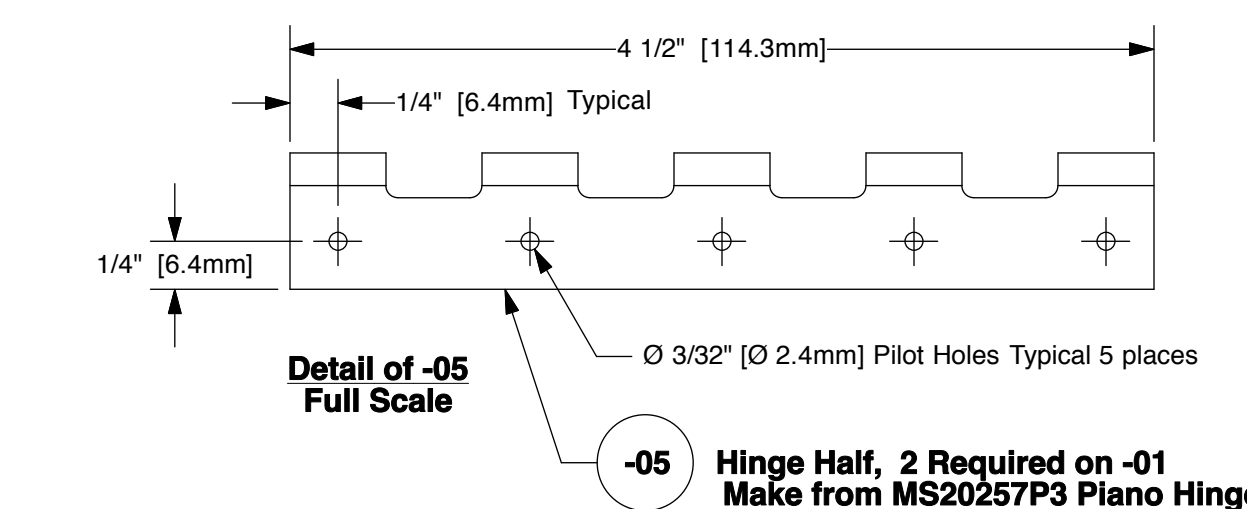
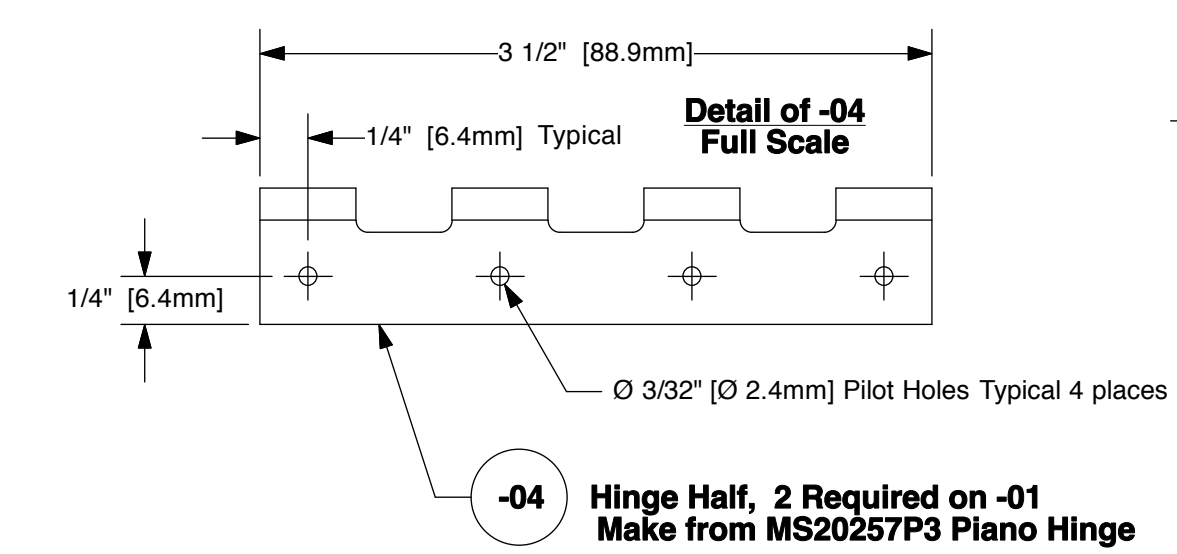
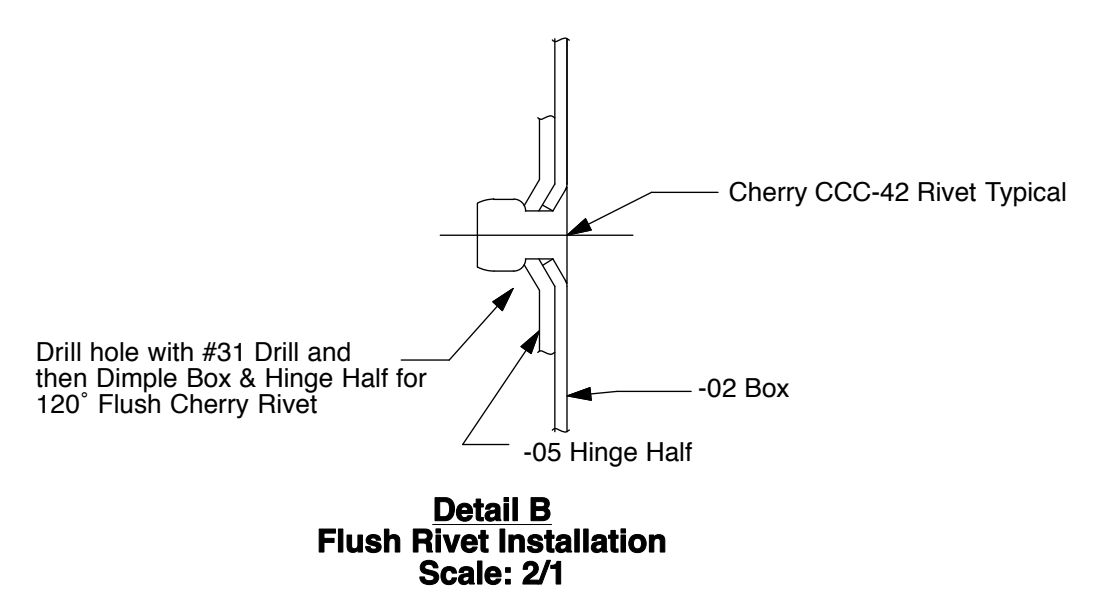
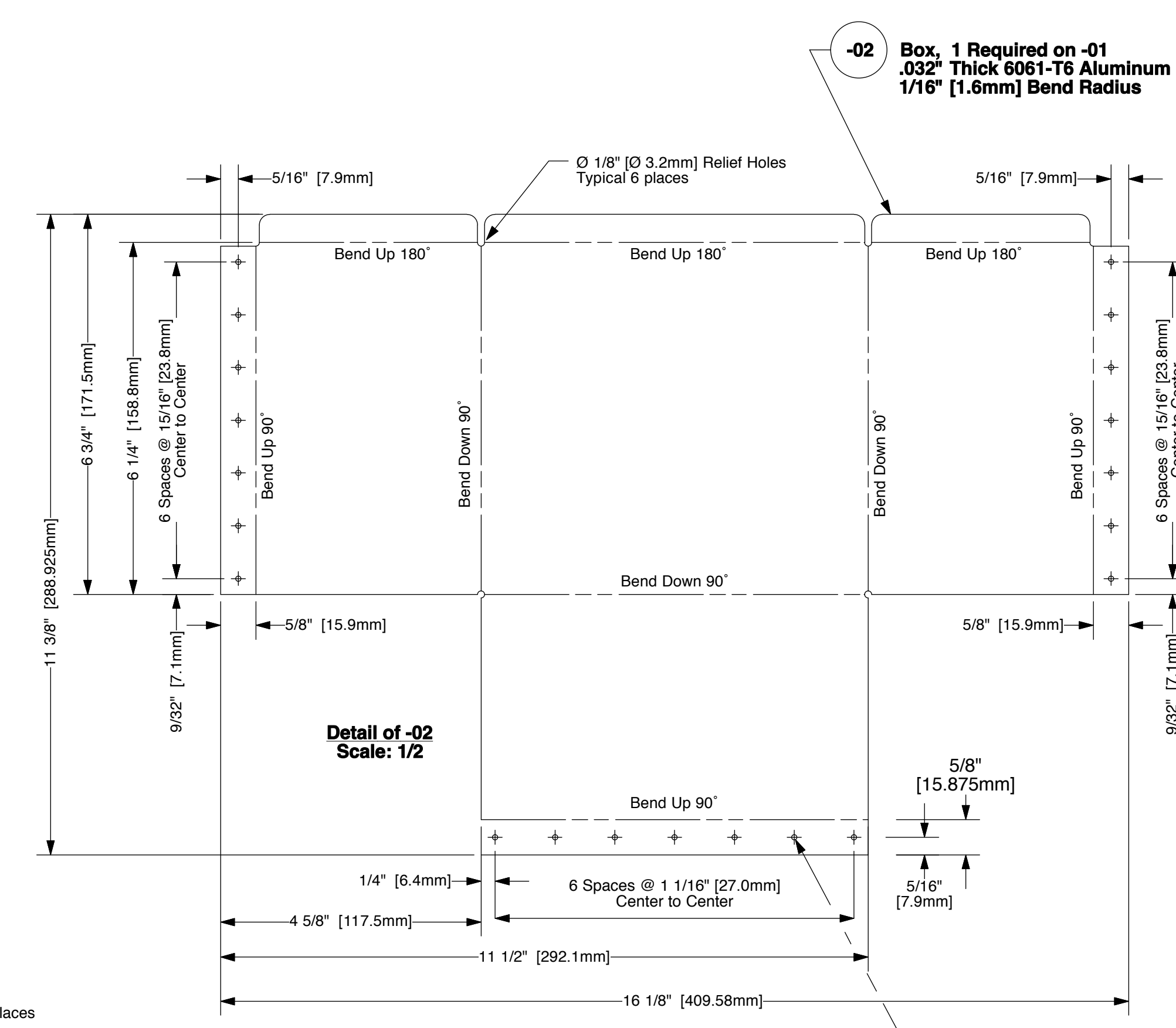
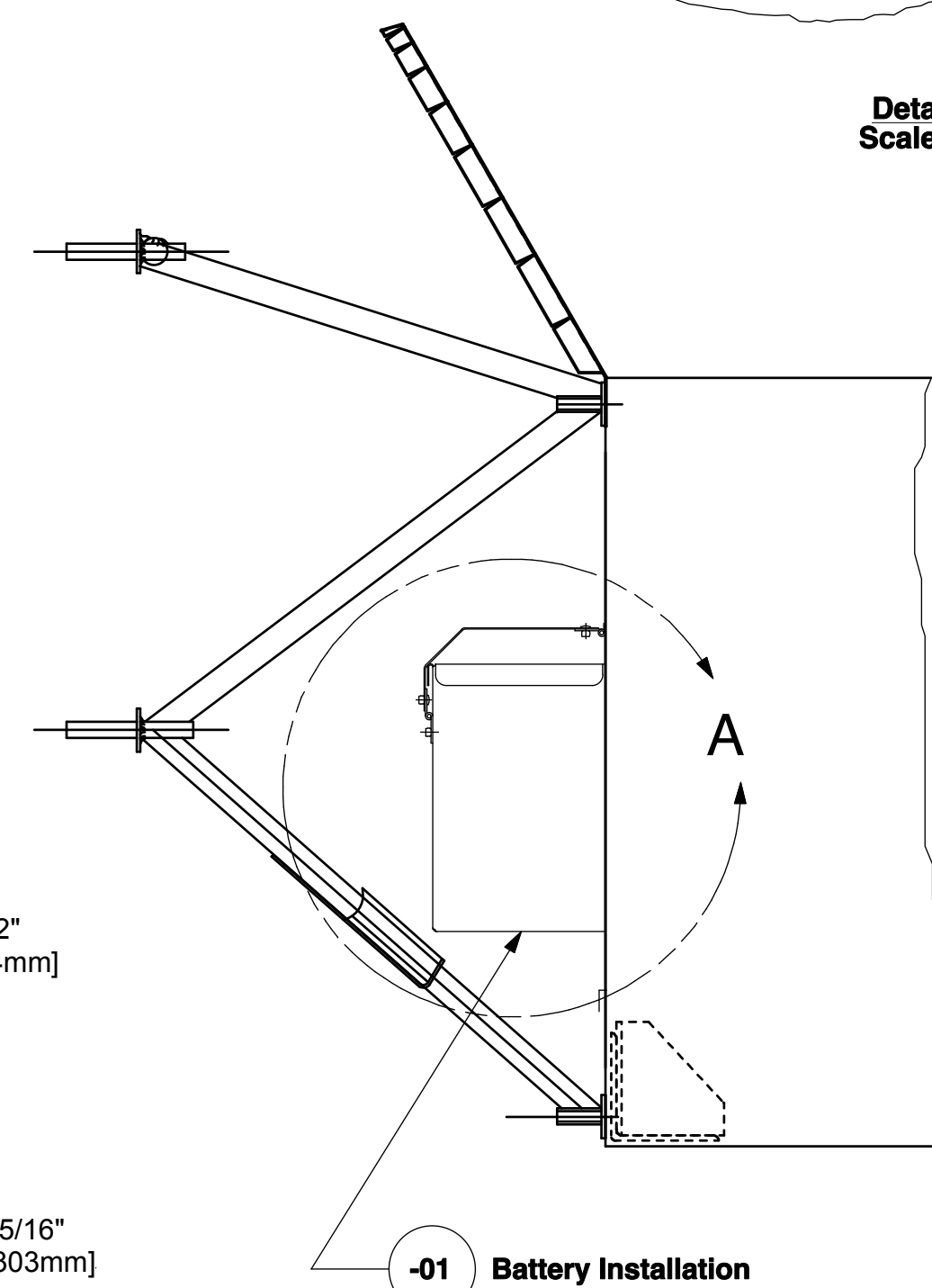
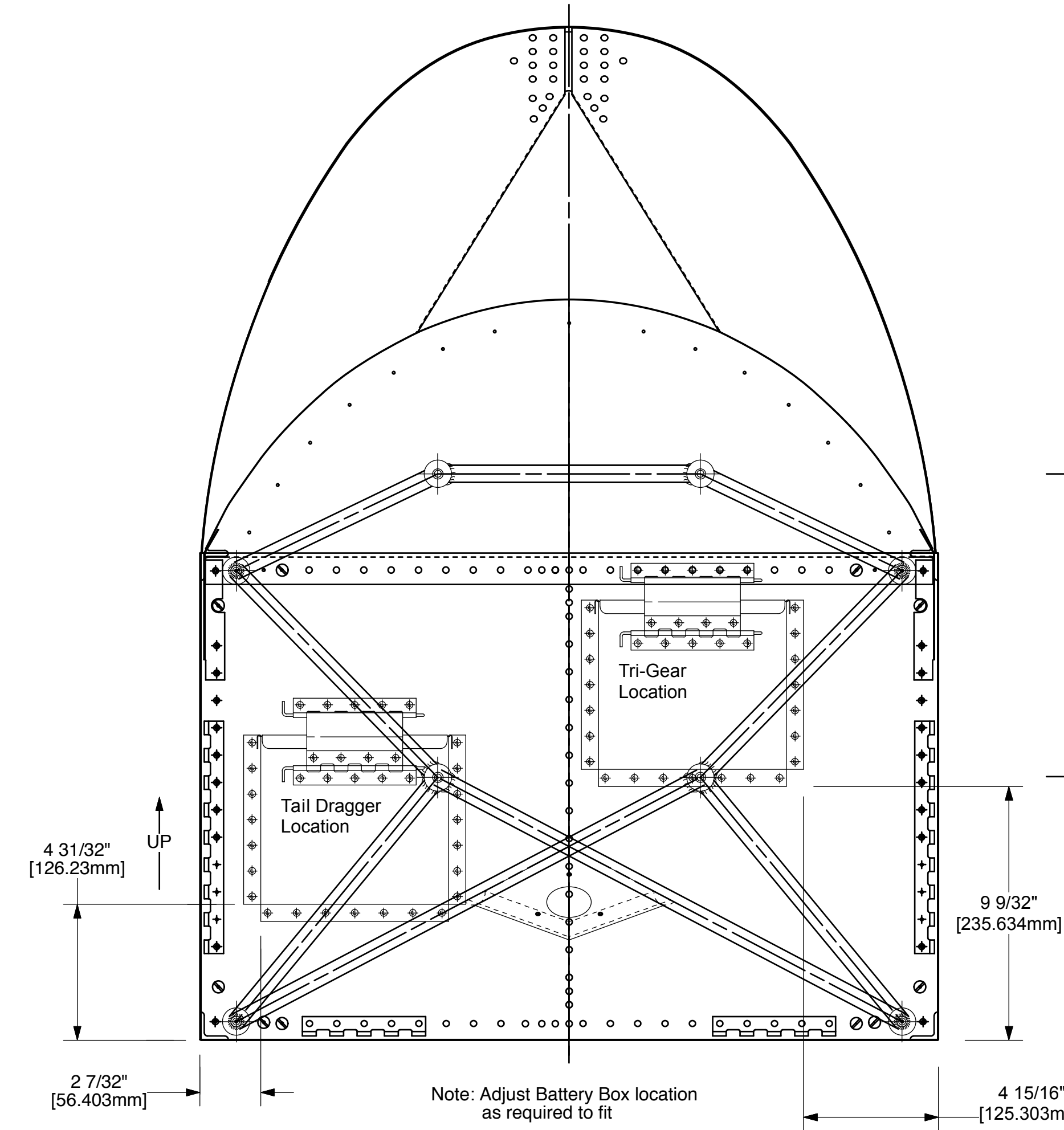


The information disclosed herein is the property of the originator who reserves all patent, design, proprietary, manufacturing, use and sales rights thereto, except for the rights expressly granted to others. This document shall not be reproduced nor shall the information contained within be used by or disclosed to others except as expressly authorized by the originator.

Revision Letter	Change Description	
A	Battery Box Blank Height was incorrect at 10 3/4". Correct height 11 3/8".	
B	Added Tri-Gear Battery Box Location to -01 Front View	2.28.12



Note: Size Battery Box to fit Battery being used. The Battery Box defined on this drawing is for a ODYSSEY PC625 Battery. Battery Box may need to be modified depending on builder's battery preference.



-01	1	Battery Installation	ONX-P01
Dash / Part Number	Qty Req'd	Part Title	Next Assembly

onex
Battery Box Details and Installation

Drawing Scale 1/8 & Noted	Drawing Number ONX-P03	Revision B
------------------------------	---------------------------	---------------