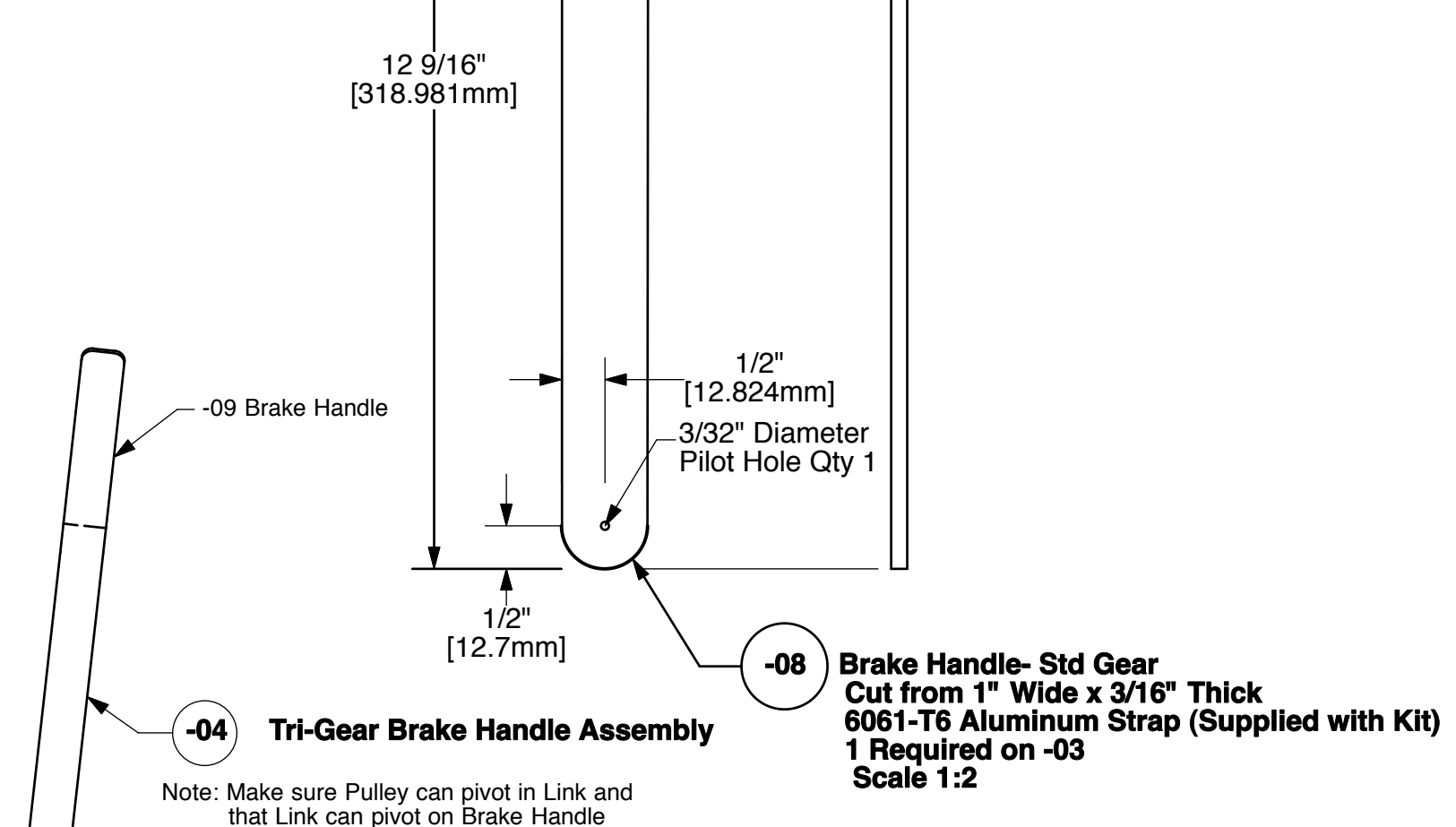
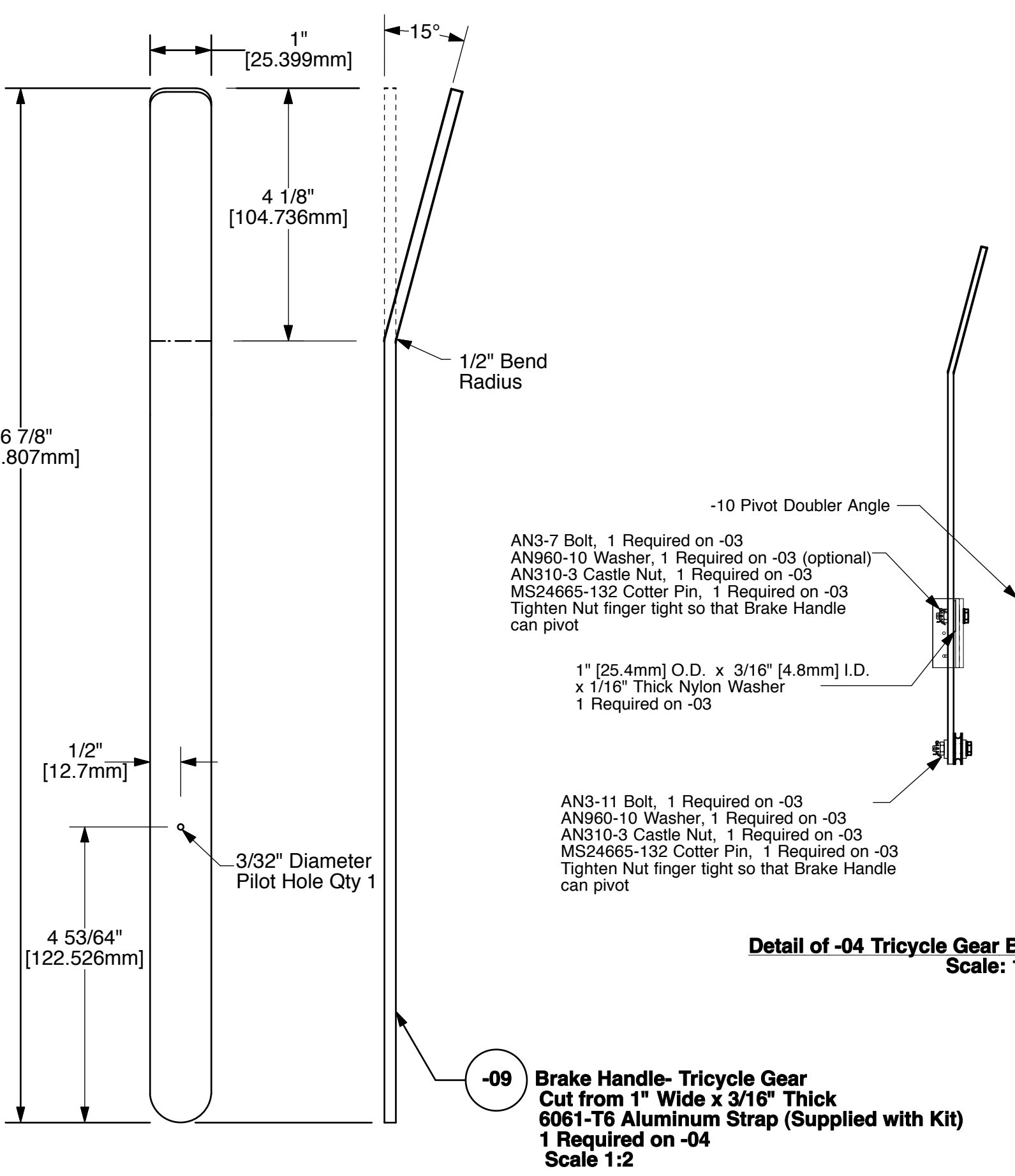
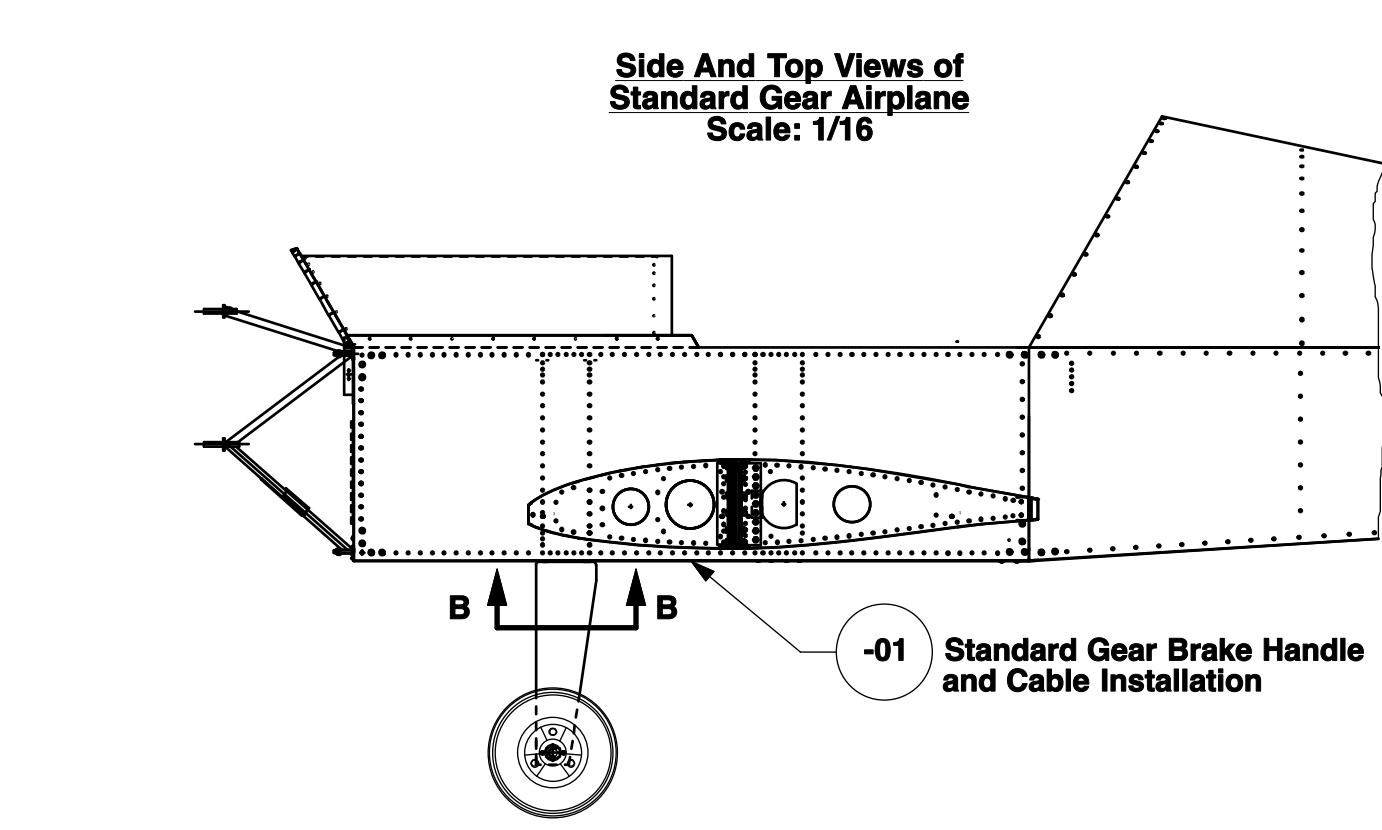
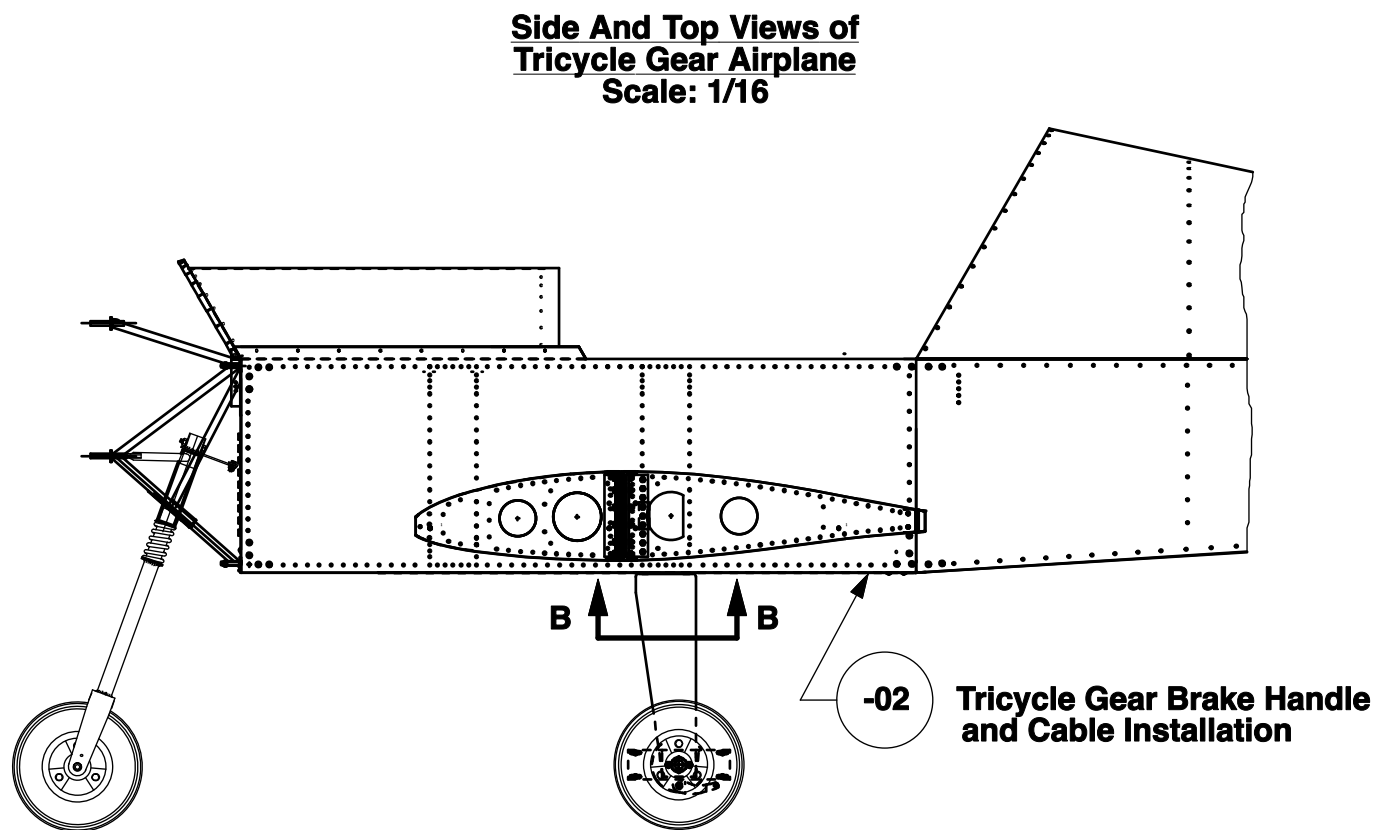
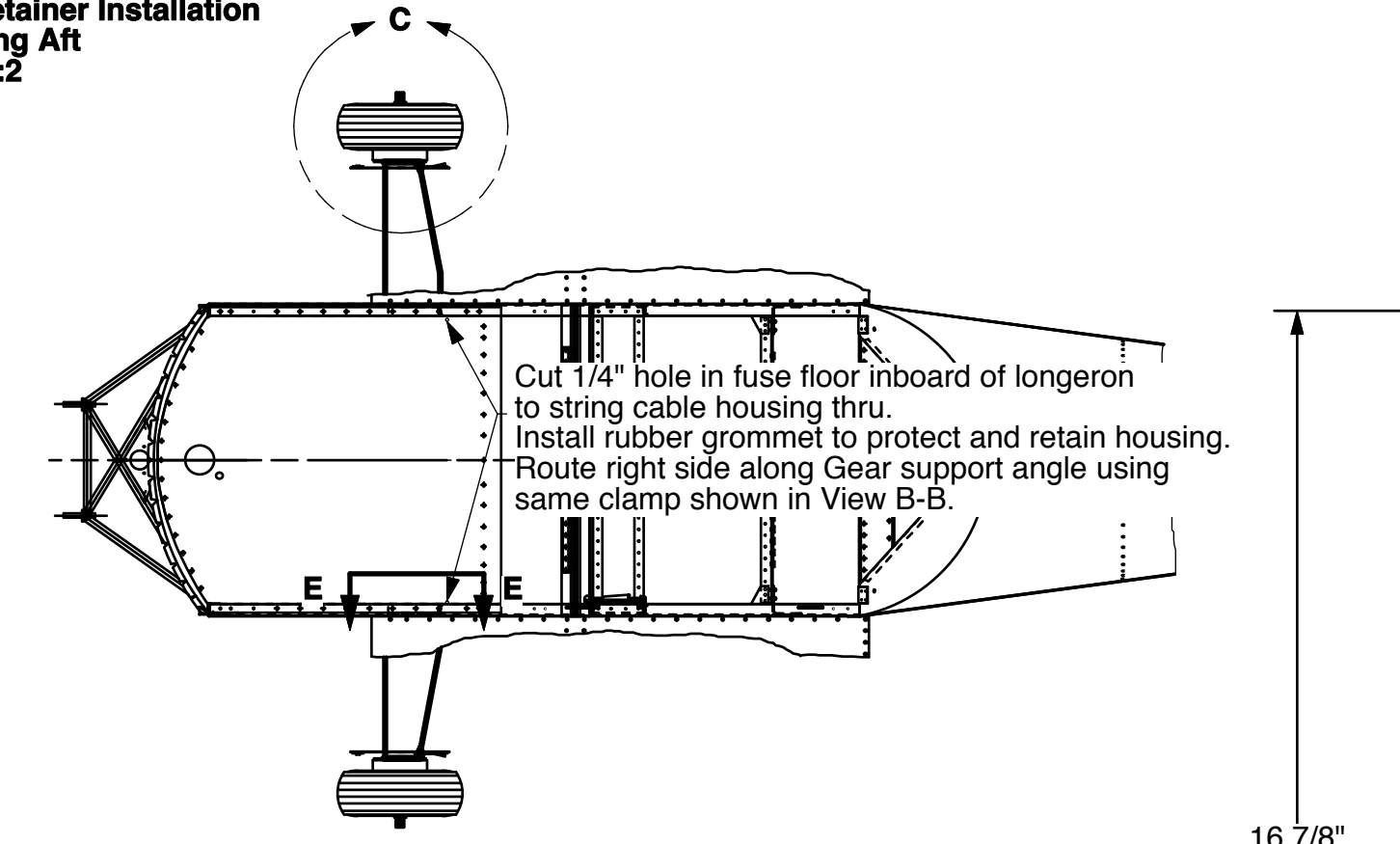
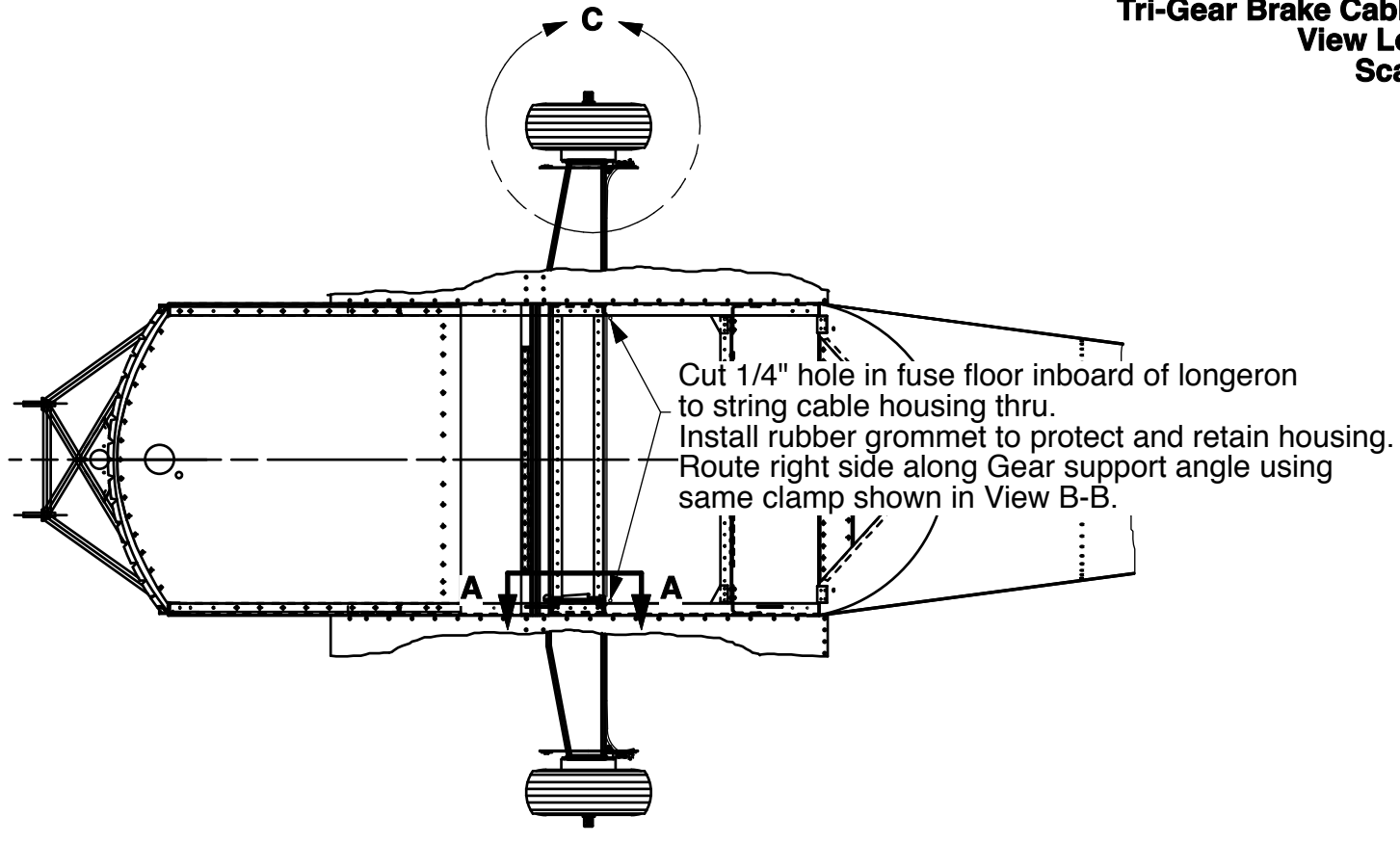
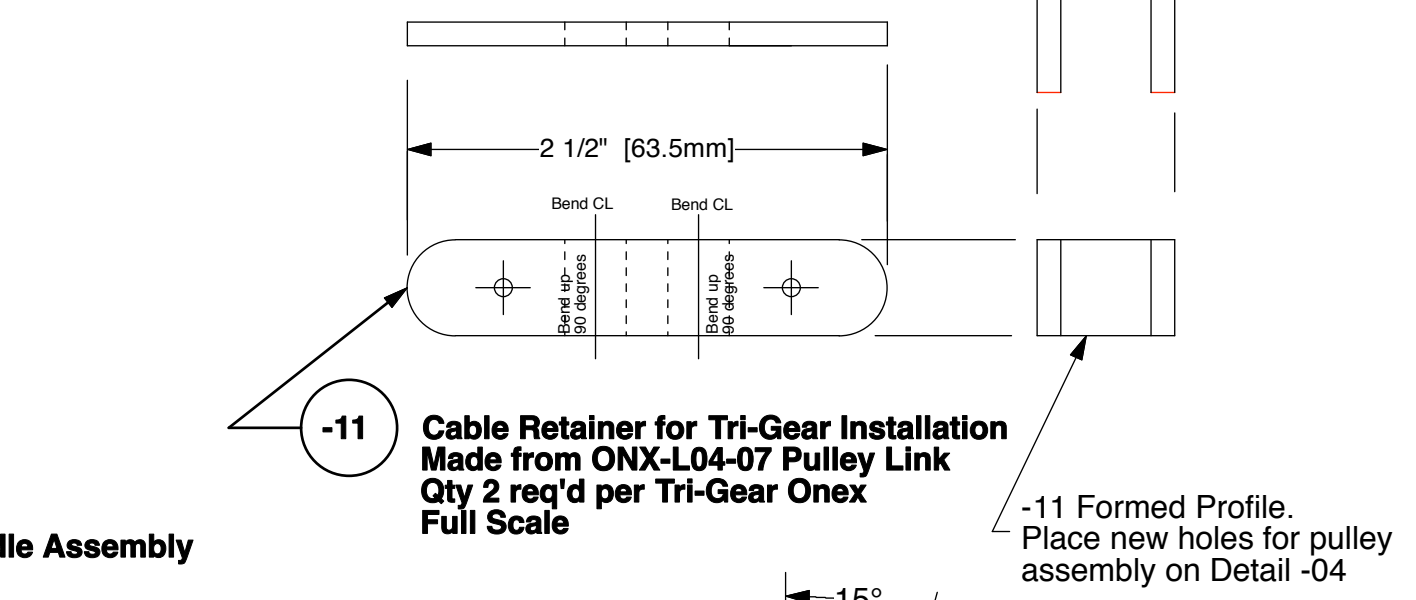
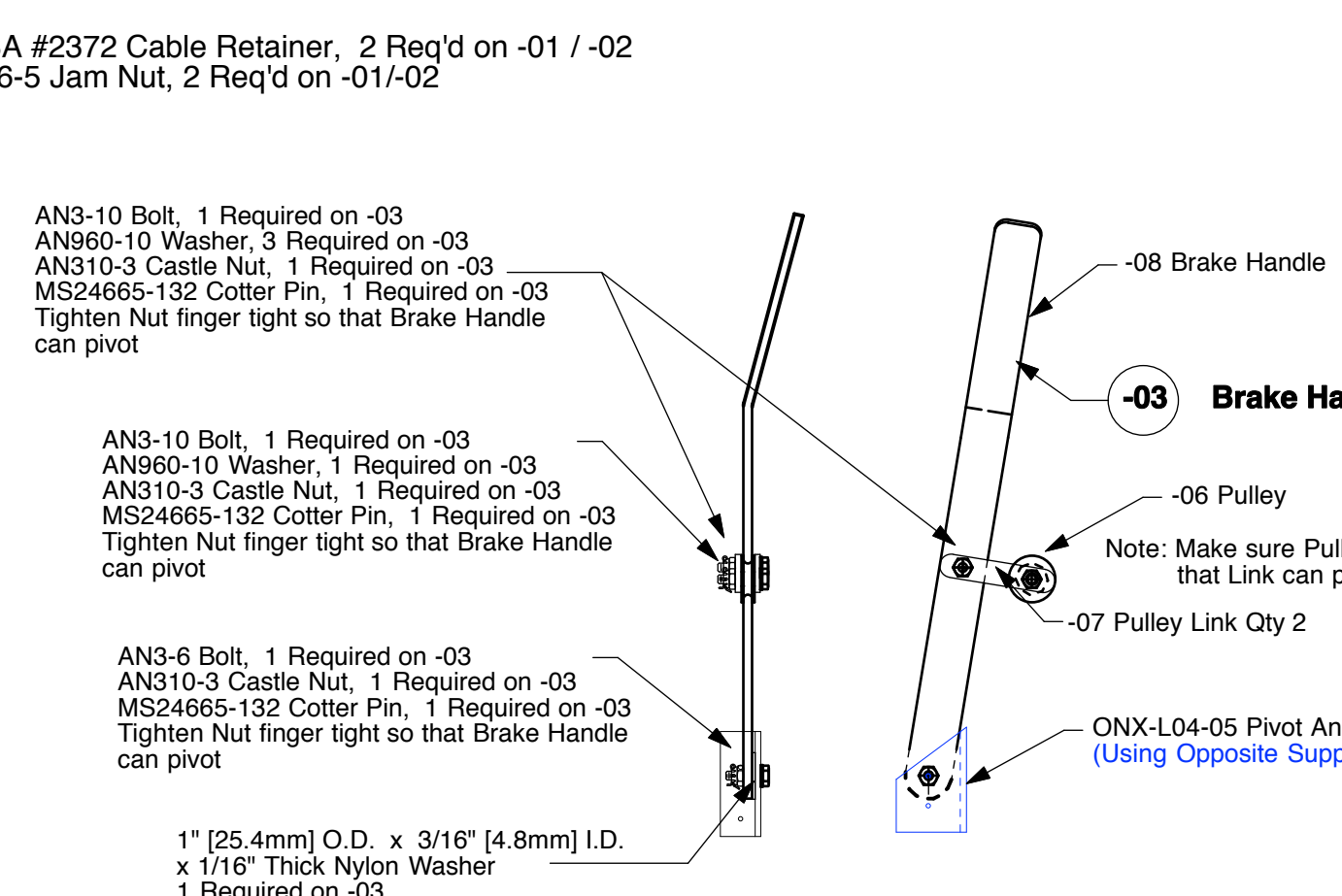
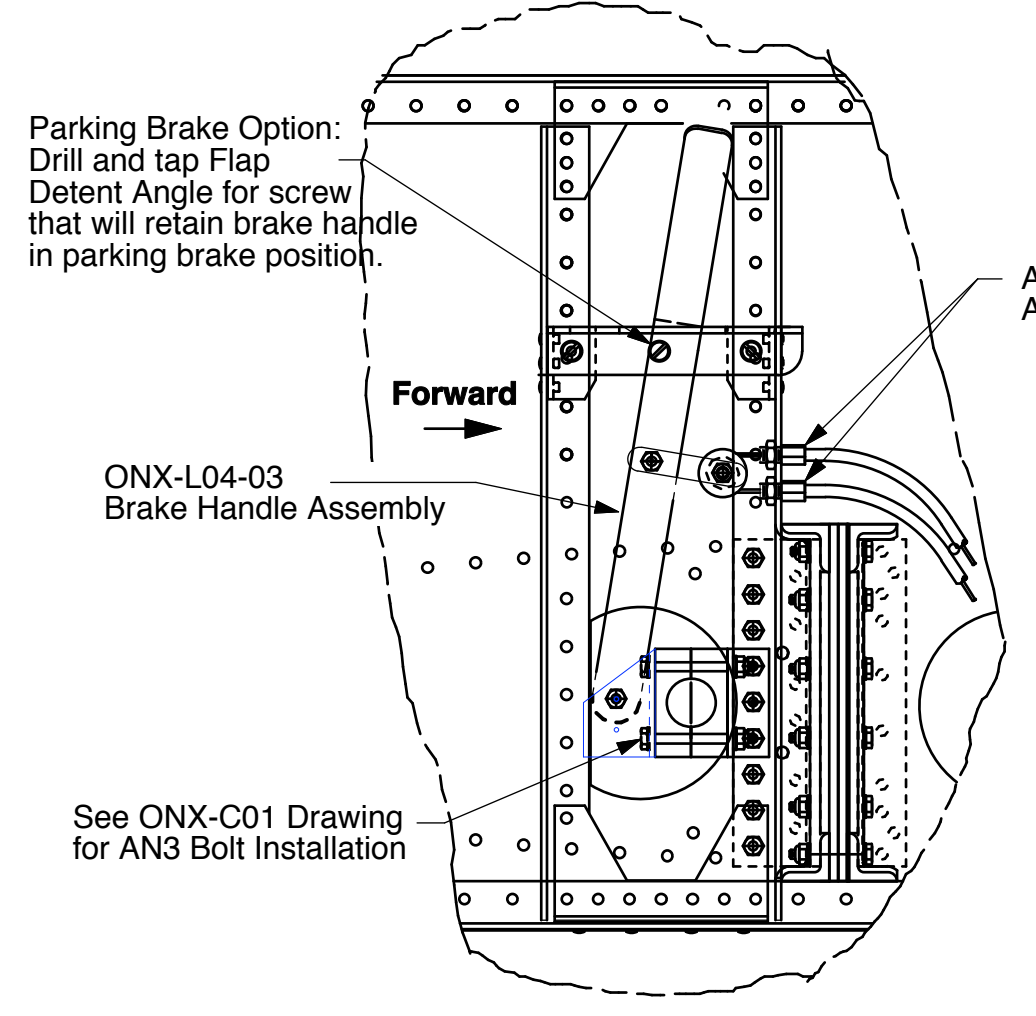
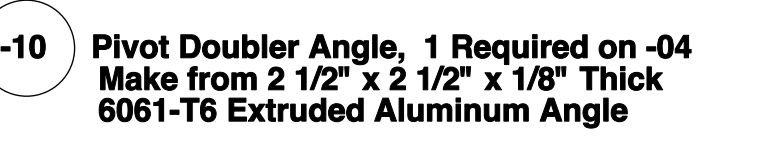
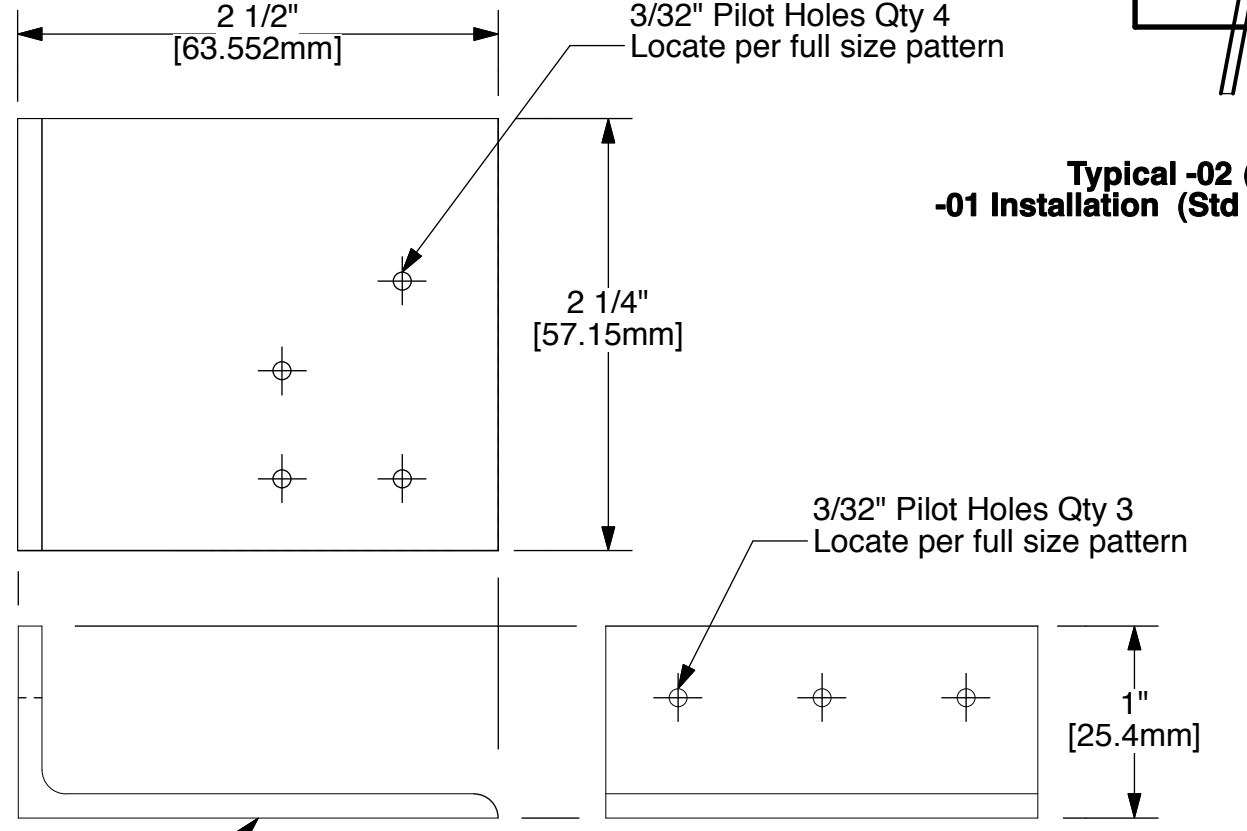
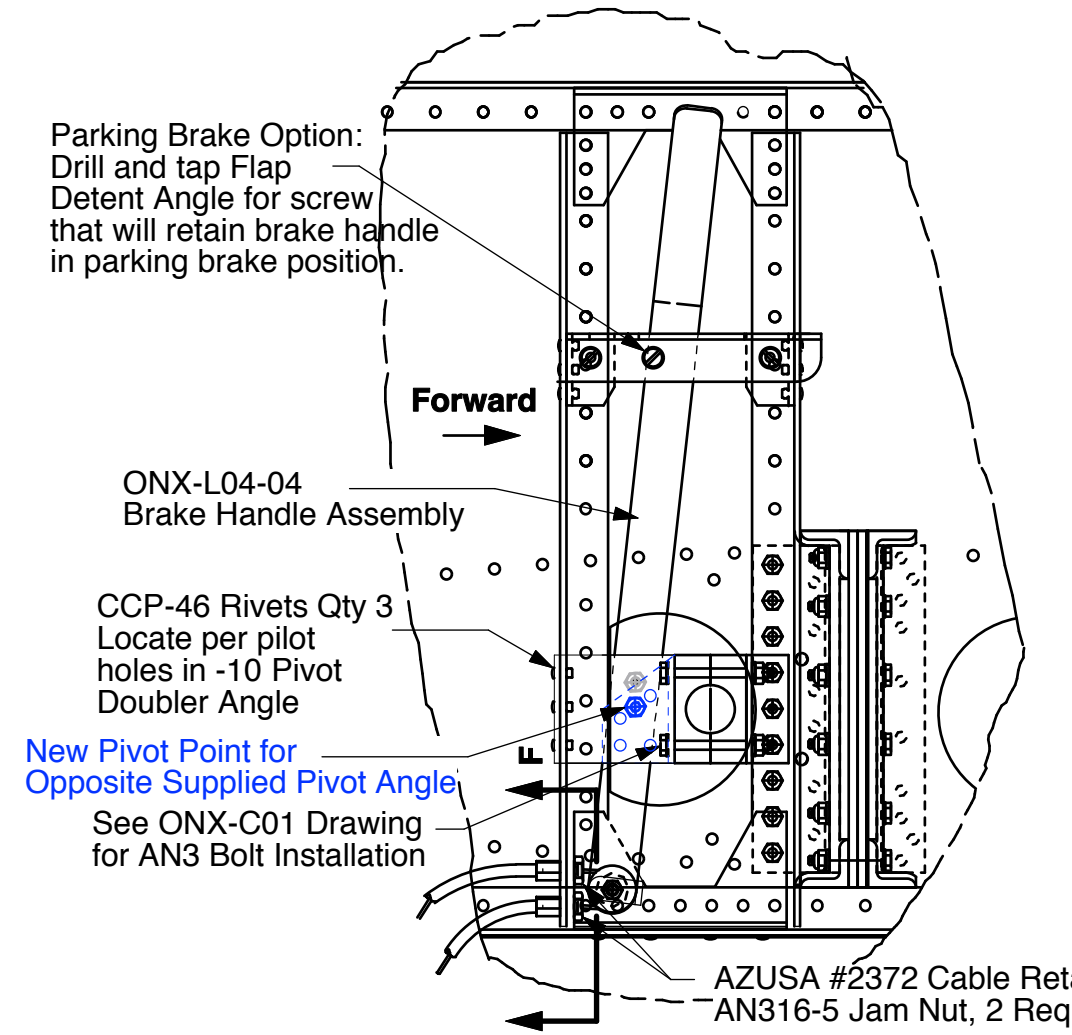
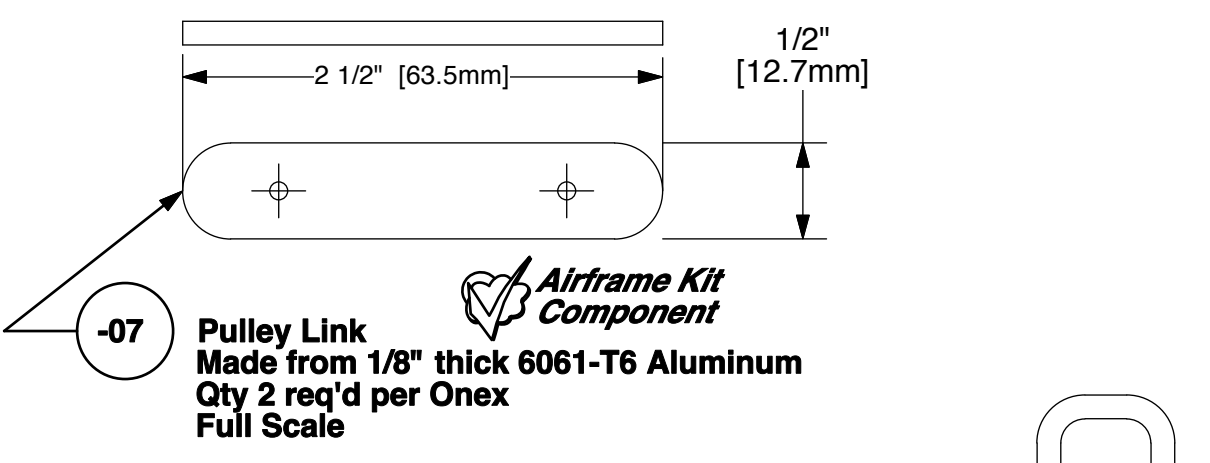
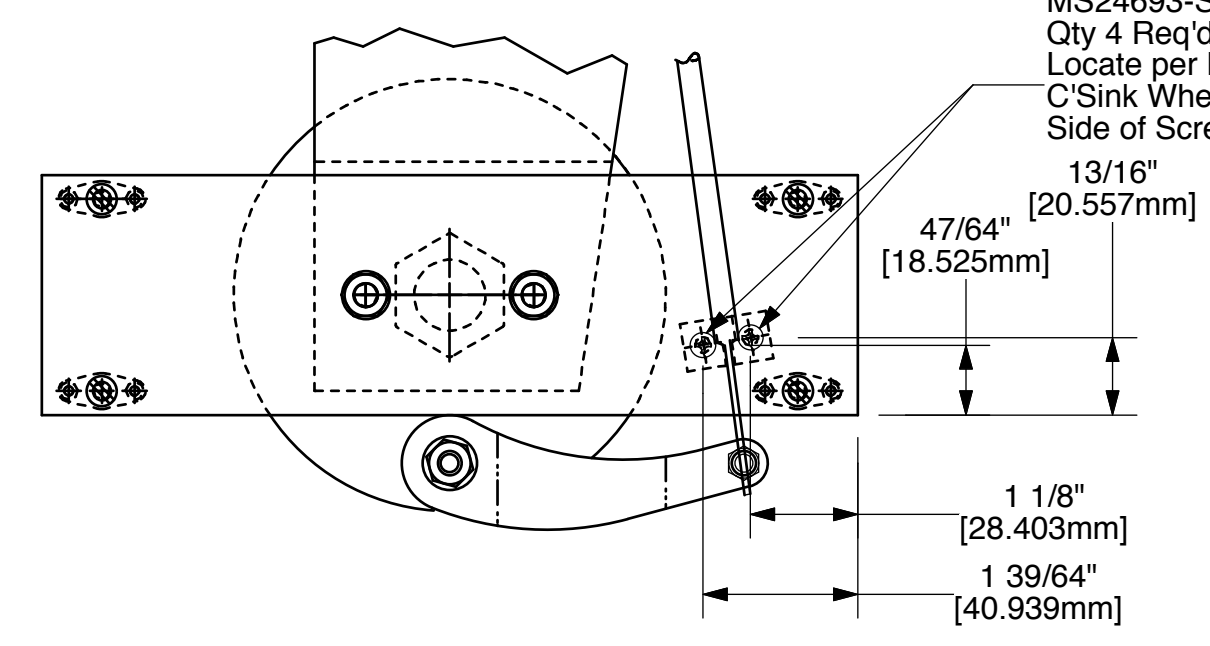
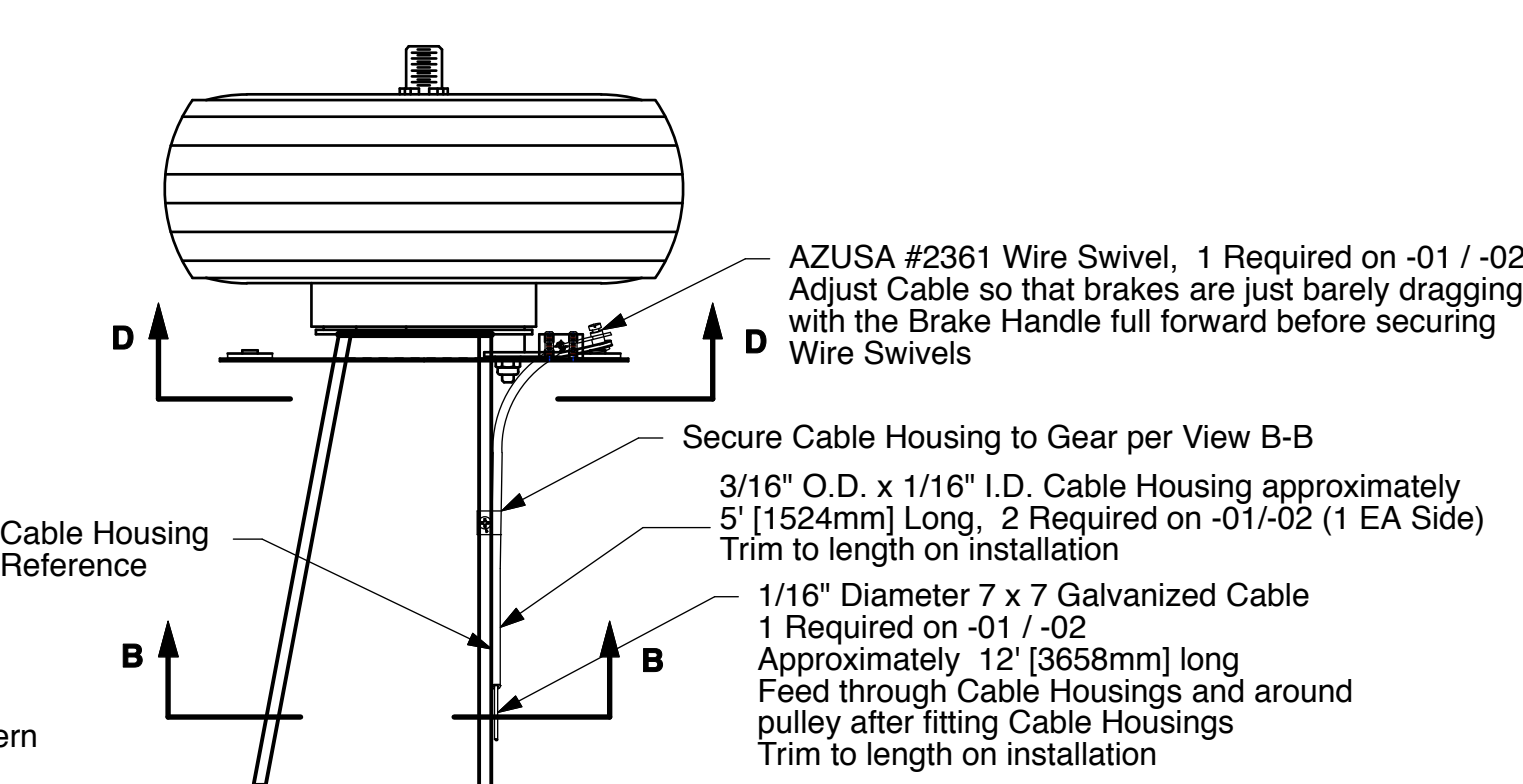
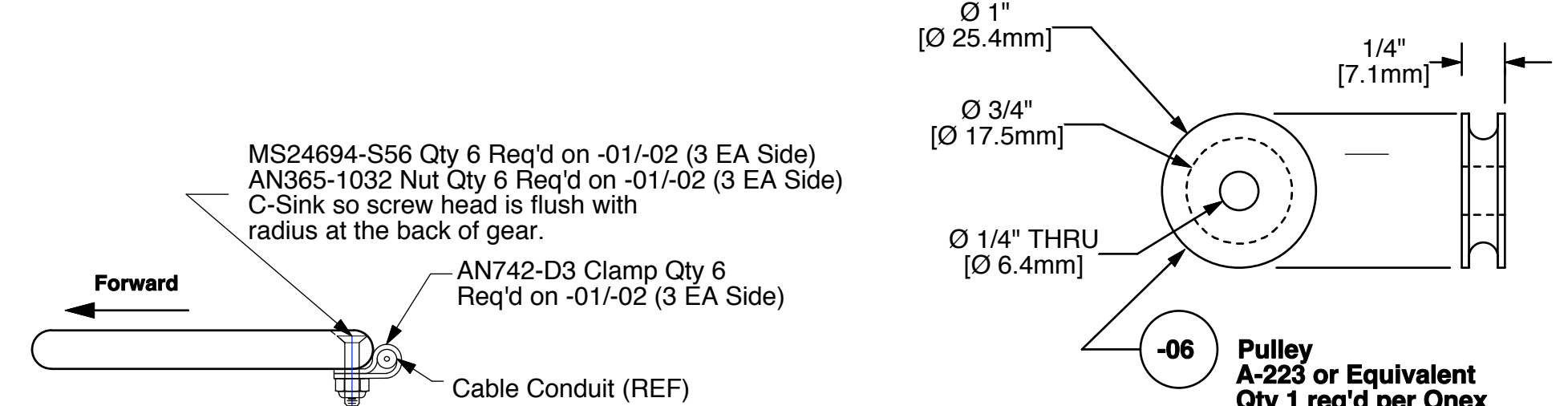


The information disclosed herein is the property of the originator who reserves all patent, design, proprietary, manufacturing, use and sales rights thereto, except for the rights expressly granted to others. This document shall not be reproduced nor shall the information contained within be used by or disclosed to others except as expressly authorized by the originator.

Revision Letter	Change Description



Dash Number	Engine Type / Size	Landing Gear Configuration
-01	AeroVee	Standard Gear
-02	AeroVee	Tricycle Gear

Configuration Dash Number

Dash / Part Number	Qty Req'd	Part Title	Next Assembly
-02	1*	Tricycle Gear Brake Handle Instl	ONX-B04
-01	1*	Std Gear Brake Handle Installation	ONX-B04

onex
Brake Handle and Cable Installation
REF: Using Supplied ONX-L04-05 Brake Pivot Angle

Drawing Scale	Drawing Number	Revision
1/4 & Noted	ONX-L04	N/C