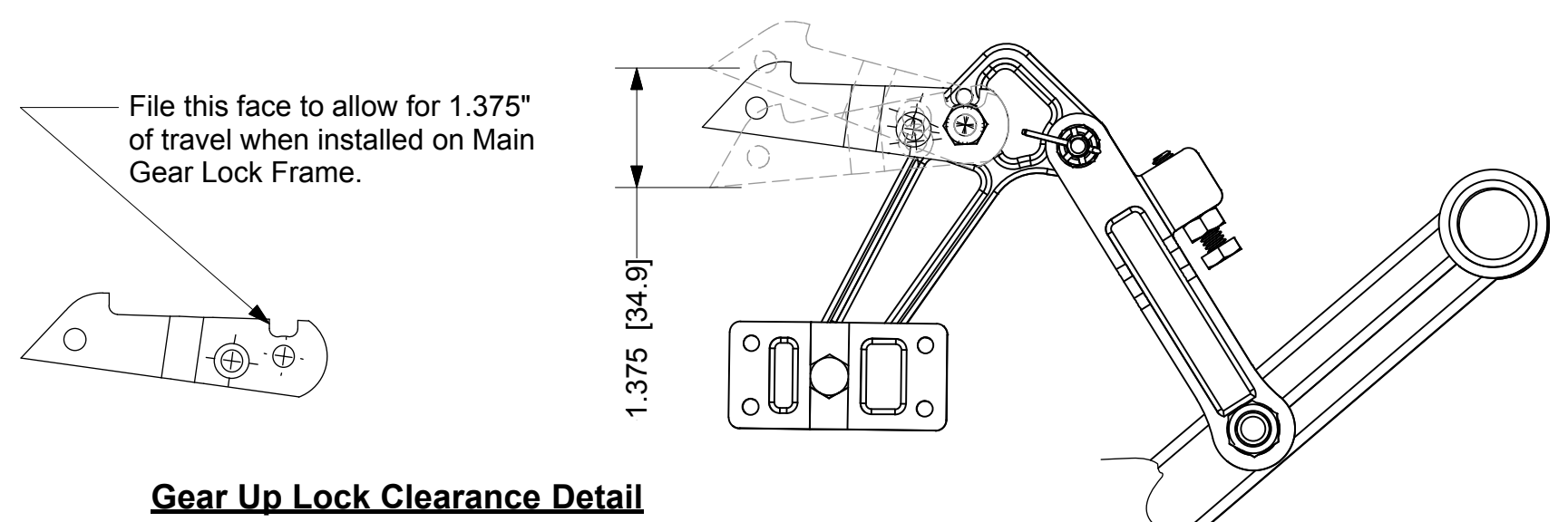
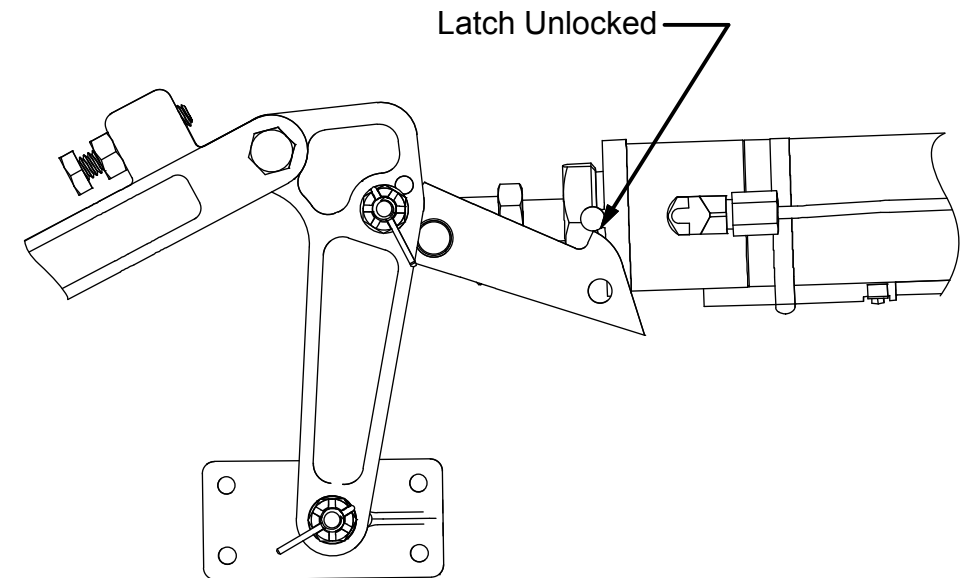
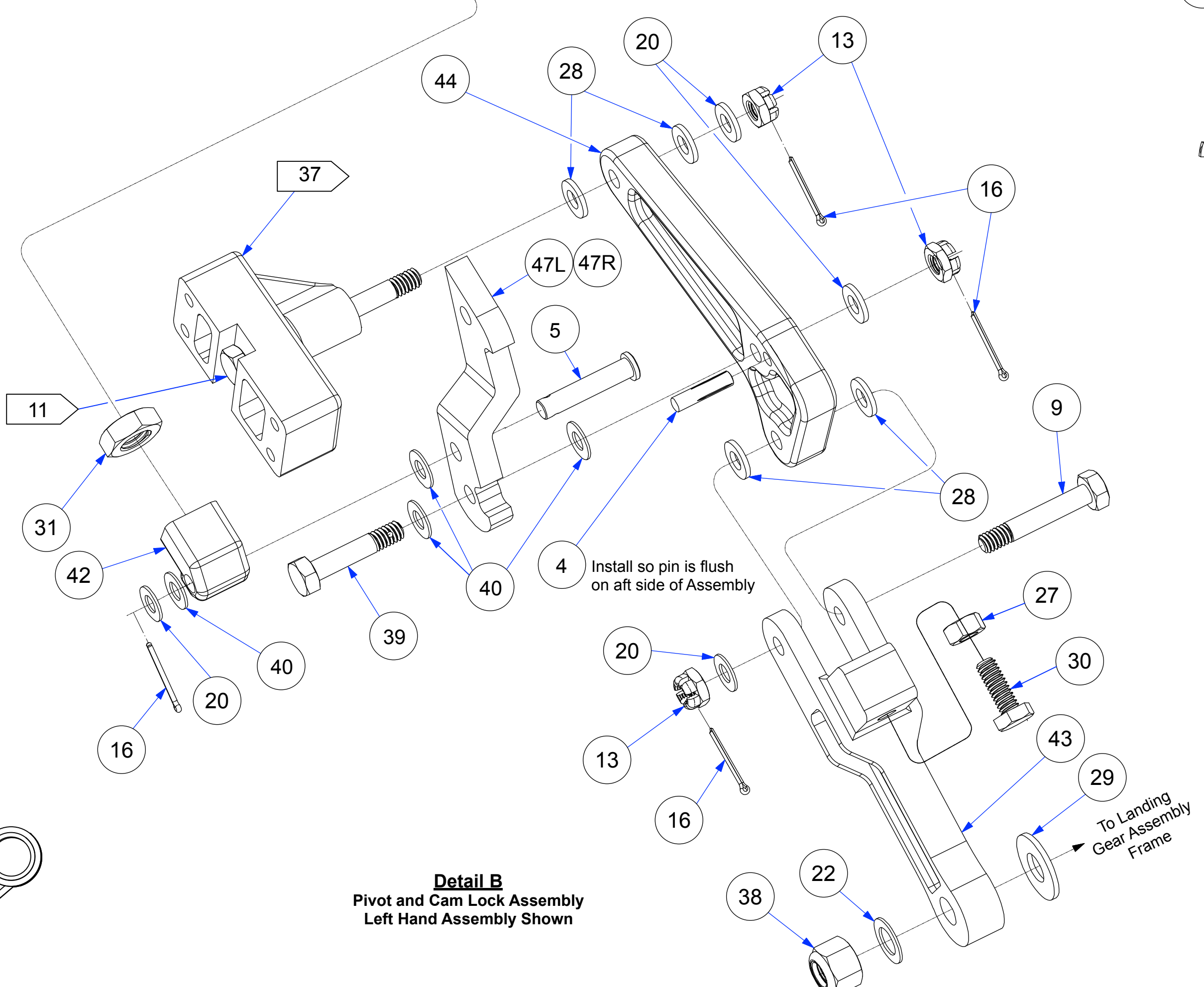
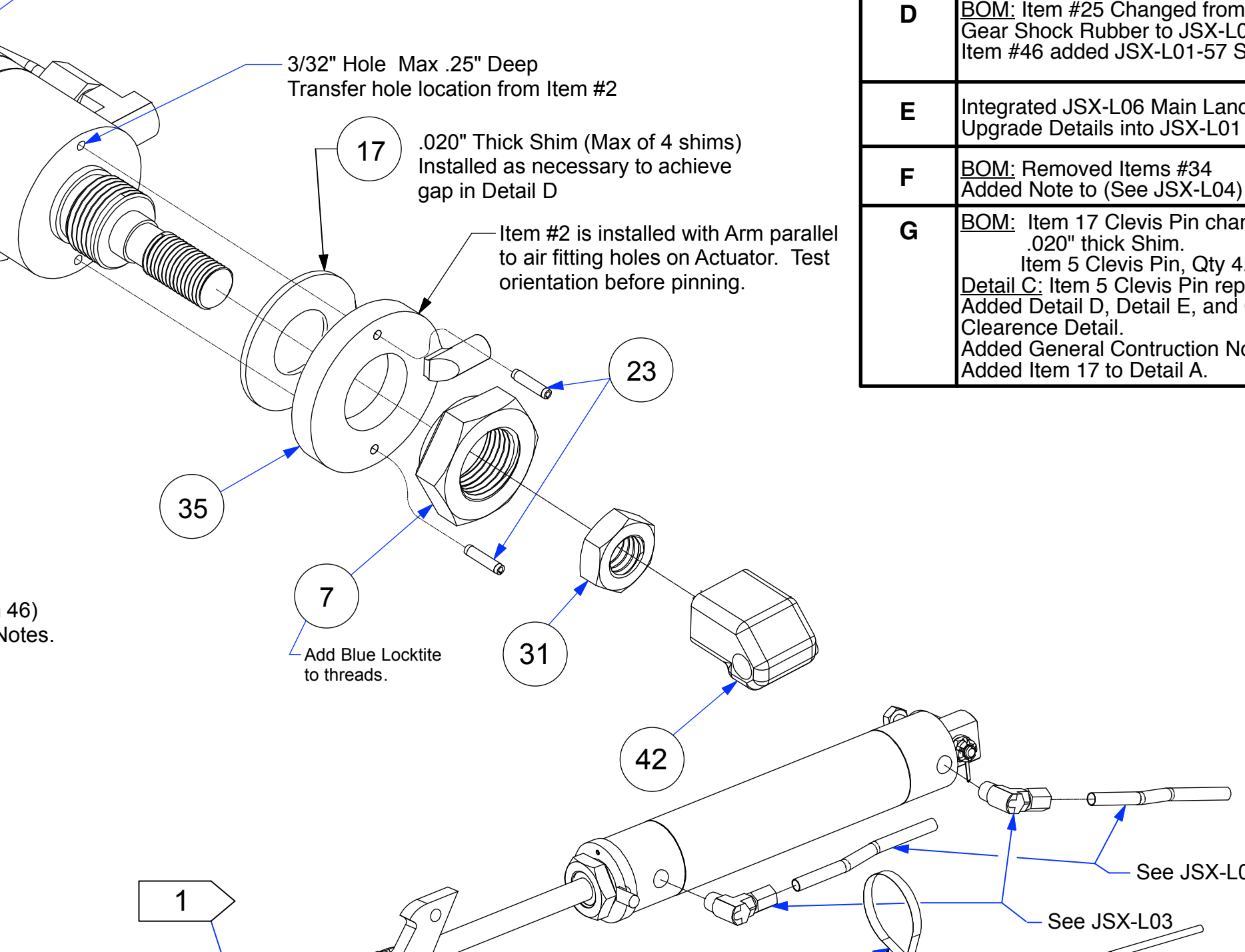
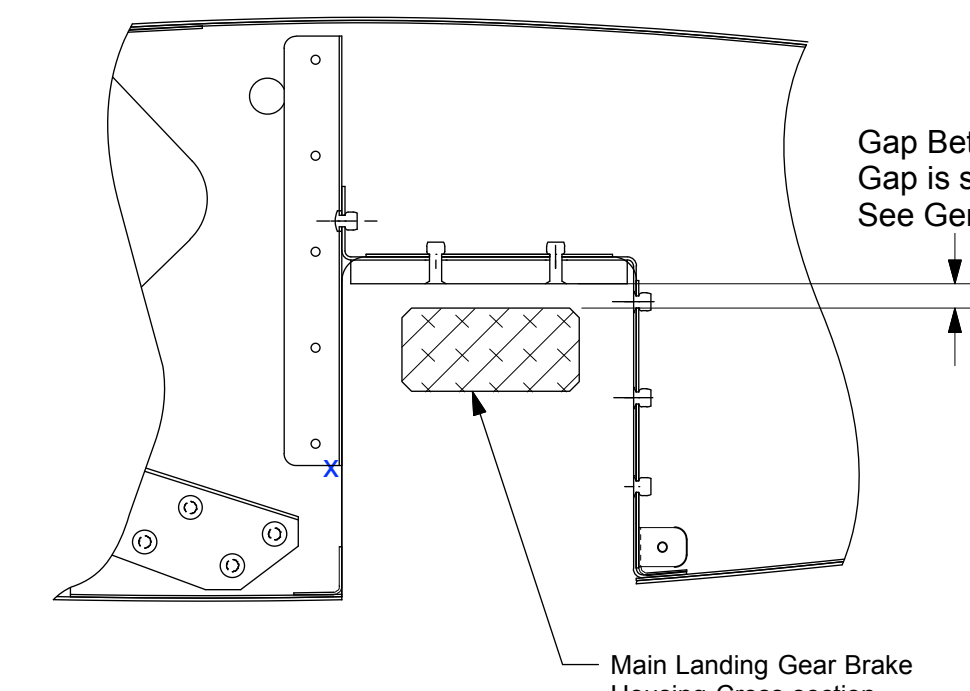
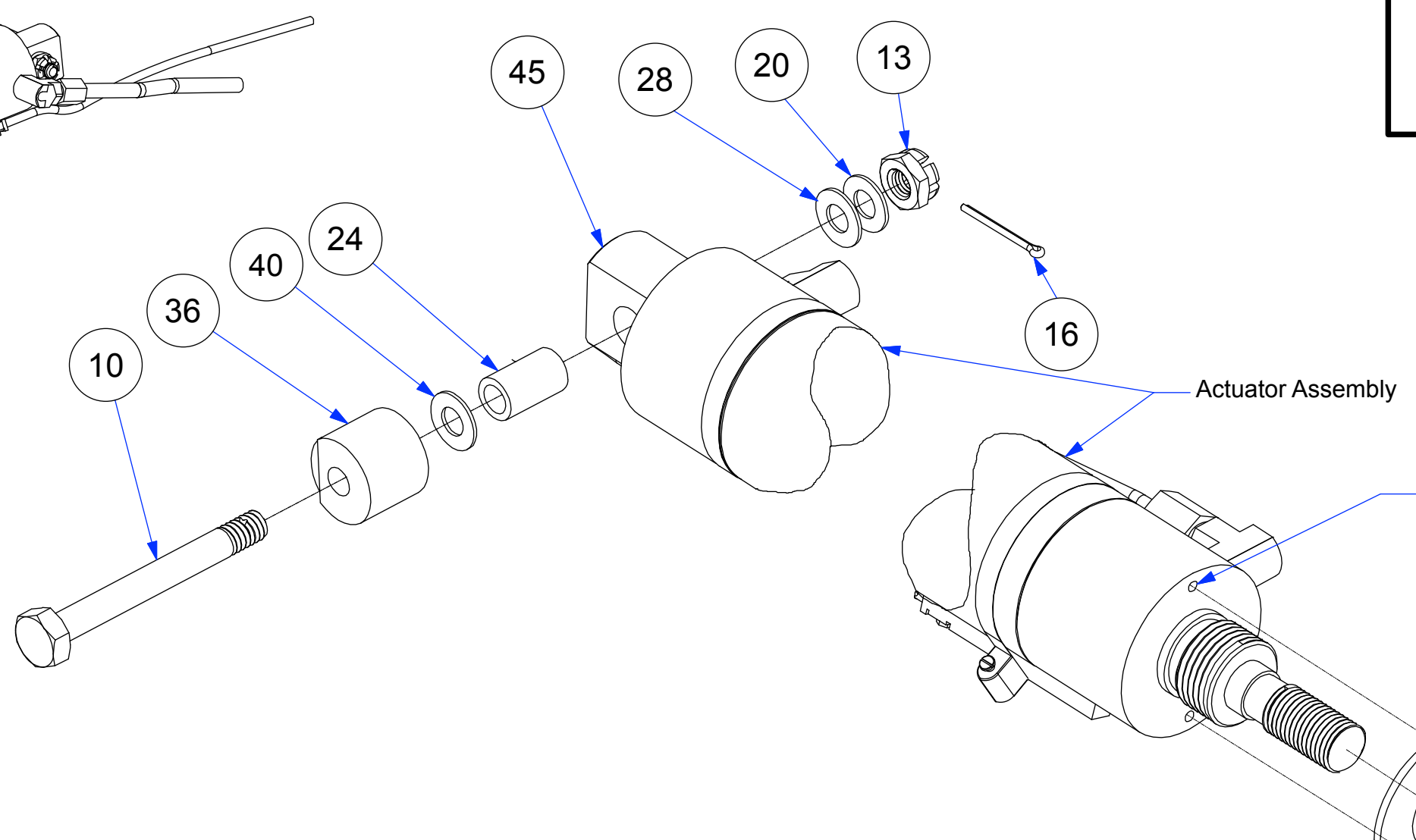
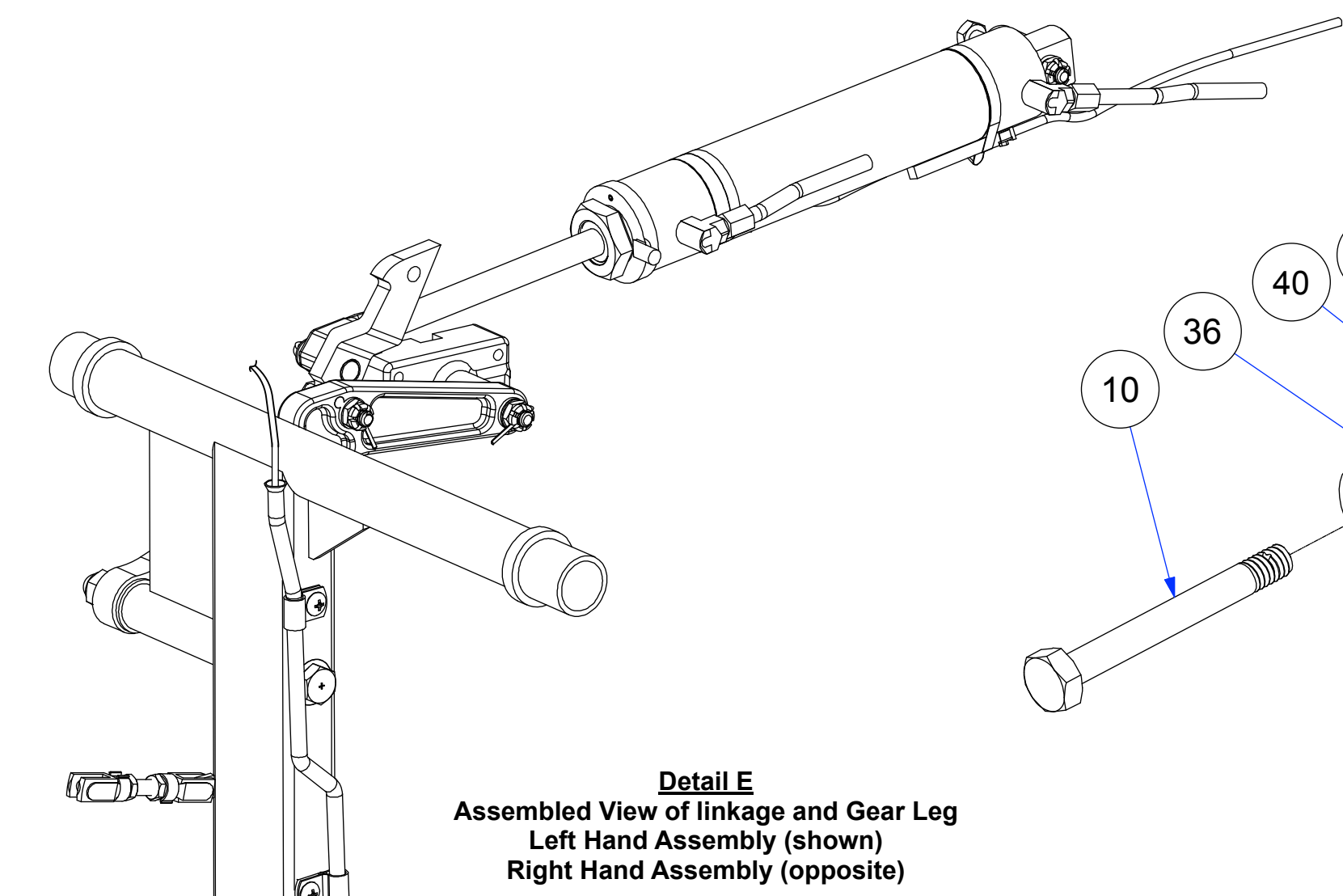


ITEM NO.	PART NUMBER	DESCRIPTION	QTY.	Both Assy (QTY)
1	JSX-L01-10	Main Landing Gear Frame	1	2
2L	JSX-L01-01L	Wheels and Brake Assembly LH	1	1
2R	JSX-L01-01R	Wheels and Brake Assembly RH	1	1
4	JSX-L01-66	Grooved Dowel Pin	1	2
5	AN394-35	Clevis Pin	2	4
6	JSX-L01-48	Threaded Rod 1.5" 10-32	1	2
7	JSX-L01-63	Machined Hex Nut	1	2
8	JSX-L01-49	Clevis Pin for Door Link	2	4
9	AN4-14	Bolt	1	2
10	AN4-22	Bolt	1	2
11	AN4-24	Bolt	1	2
12	AN6-55A	Bolt	1	2
13	AN310-4	Castle Nut	4	8
14	AN315-3R	Jam Nut	2	4
15	AN380-3-2	Cotter Pin	1	2
16	AN380-2-2	Cotter Pin	5	10
17	JSX-L01-67	Shim .020" thick	4	8
18	AN526-832-R5	Pan Head Machine Screw	2	4
19	AN742-D4	Tube Clamp	2	4
20	AN960-416	Washer	5	10
21	AN960-416L	Washer	1	2
22	AN960-616L	Washer	1	2
23	JSX-L01-65	Roll Pin	2	4
24	JSX-L01-37	SAE 863 Bronze Sleeve Bearing	1	1
25	JSX-L01-58	Shock Spring	2	4
26	03-40400	1/4" Aluminum Tube 12"	1	2
27	JSX-L01-50	Nut	1	2
28	JSX-L01-51	Nylon Washer	5	10
29	JSX-L01-52	Nylon Washer	1	2
30	JSX-L01-53	Bolt	1	2
31	JSX-L02-43	Jam Nut	1	2
32	JSX-L03-12	Cylinder Position Switch	2	4
33	JSX-L03-13	Switch Mount Band	2	4
35	JSX-L01-64	Locking Arm Washer	1	2
36	M-JSX-L01-19	Upper Actuator Pivot Stand off	1	2
37	M-JSX-L01-20	Lower Actuator Pivot Block	1	2
38	AN365-624A	Selflocking Nut	1	2
39	AN4-12	Bolt	1	2
40	JSX-L01-54	Nylon Washer	5	10
42	M-JSX-L03-14	Actuator Attachment Block	1	1
43	M-JSX-L01-18	Leg Lock Link	1	2
44	M-JSX-L01-17	Main Gear Lock Frame	1	2
45	JSX-L03-10	5" Actuator	1	2
46	JSX-L01-57	Spacer Block	1	2
47L	JSX-L01-62L	L.H. Lock Arm (shown)	1	1
47R	JSX-L01-62R	R.H. Lock Arm (opposite)	1	1

The information disclosed herein is the property of the originator who reserves all patent, design, proprietary, manufacturing, use and sales rights thereto, except for the rights expressly granted to others. This document shall not be reproduced nor shall the information contained within be used by or disclosed to others except as expressly authorized by the originator.

Revision Letter	Change Description	
A	Placed on standard drawing border, corrected spelling errors, eliminated duplicate use of item numbers.	3.26.15
B	Notes: Item #31 changed to Item #26. Item #33 changed to Item #18. BOM: Item #12 changed to AN380-2-2, Item #14 changed to AN315-3R, and Item #19 changed to AN742-D4.	4.16.15
C	JSX-L01L Exploded View: Item #23 changed to Item #5. BOM: Item #21 changed to AN960-416L, Item #22 changed to AN960-616L, Deleted Item #23, Changed Item #26 Part Number to 03-40400, Changed Item #38 to AN365-624A.	4.29.15
D	BOM: Item #25 Changed from JSX-L0-43 Main Landing Gear Shock Rubber to JSX-L01-58 Shock Spring, Item #46 added JSX-L01-57 Spacer Block.	3.03.17
E	Integrated JSX-L06 Main Landing Gear Up Lock Upgrade Details into JSX-L01 Drawing.	1.25.19
F	BOM: Removed Items #34. Added Note to (See JSX-L04).	2.21.19
G	BOM: Item 17 Clevis Pin changed to JSX-L01-63 .020" thick Shim. Item 5 Clevis Pin, Qty 4. Was Qty 2. Detail C: Item 5 Clevis Pin replaced Item 17. Added Detail D, Detail E, and Gear Uplock Clearance Detail. Added General Construction Note. Added Item 17 to Detail A.	6.21.19



- Notes:**
- Apply Blue Locktite to the threads of item 7.
 - Items with () are already installed on aircraft.
 - #18 Needs holes to be drilled and tapped to 8/32. Screw location should not interfere with lower 90% of Shock Spring. Location TBD by Customer.
 - Item #26 Requires Bending. TBD by Customer.
 - Items 42 and 44 are universal for LH and RH assemblies. They are shown in Left Hand configuration, RH is opposite.
 - Item 37 shown for clarity, do not remove from spar.
 - Item #45 Requires holes to be drilled. See: Detail A

- General Construction Notes:**
- 1) File lock arm for proper travel. See: **Gear Up Lock Clearance Detail**
 - 2) Assemble Pivot and Cam Lock Assembly. See: **Detail B** (Linkage and Actuator can be assembled before installing on aircraft.)
 - 3) Check for proper gap between brake housing and Delrin bumper. See: **Detail D**
 - 4) Add Item 17 in area indicated in **Detail A** to achieve gap shown in **Detail D**.

-01L	1	LH Main Landing Gear Installation	JSX-B04
-01R	1	RH Main Landing Gear Installation	JSX-B04
Dash / Part Number	Qty Req'd	Part Title	Next Assembly
Sub Sonex			
Main Landing Gear Details and Installation			
Drawing Scale	Drawing Number	Revision	
NONE	JSX-L01	G	