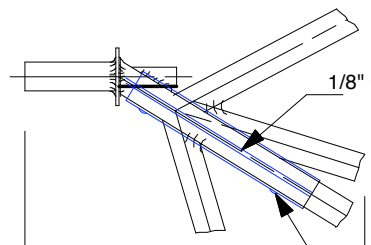
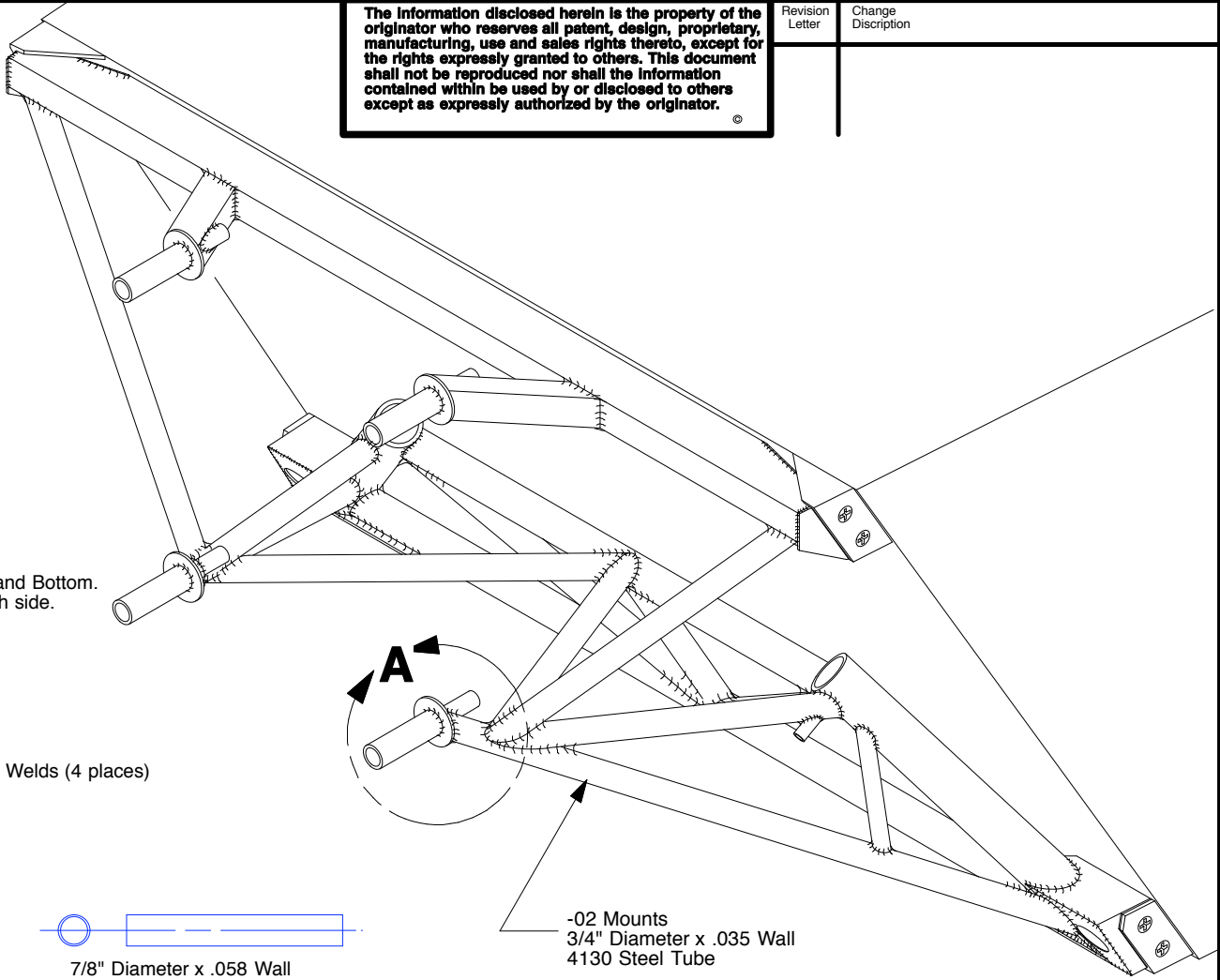


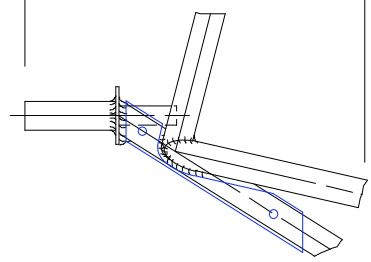
The information disclosed herein is the property of the originator who reserves all patent, design, proprietary, manufacturing, use and sales rights thereto, except for the rights expressly granted to others. This document shall not be reproduced nor shall the information contained within be used by or disclosed to others except as expressly authorized by the originator. ©

| Revision Letter | Change Description |
|-----------------|--------------------|
| | |



Detail A (Top View)

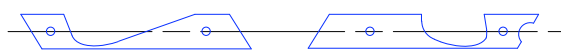
Rosette Welds (4 places)



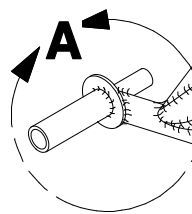
Detail A (Side View)
Remove Powder coating from this area.
Weld both ends and sides.



7/8" Diameter x .058 Wall
4130 Steel Tube
6" Long (Qty 2 Req'd)



Cut to rough profiles shown:
(provide 1/8" clearance with all cross-tubes.)



-02 Mounts
3/4" Diameter x .035 Wall
4130 Steel Tube

Sonex Aircraft, LLC
Optional Sonex Motor
Mount Repair

| | | |
|------------------------------|---|------------------------|
| Drawing Scale NONE | Drawing Number SNX-Mount-Repair | Revision N/C |
|------------------------------|---|------------------------|