



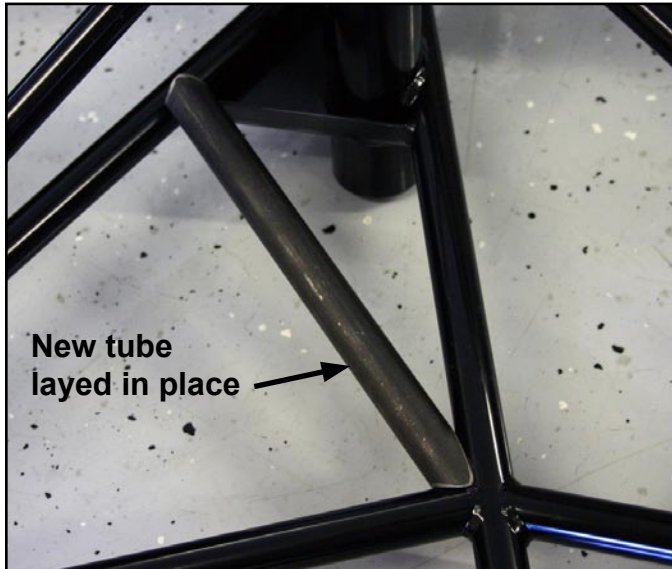
sonex aircraft^{LLC}

P.O. Box 2521 Oshkosh, WI 54903-2521
Tel. (920)-231-8297 Fax. (920)-426-8333
www.sonexaircraft.com

Jabiru 3300 Tri Gear Motor Mount Tube Installation

(Rev N/C 091911)

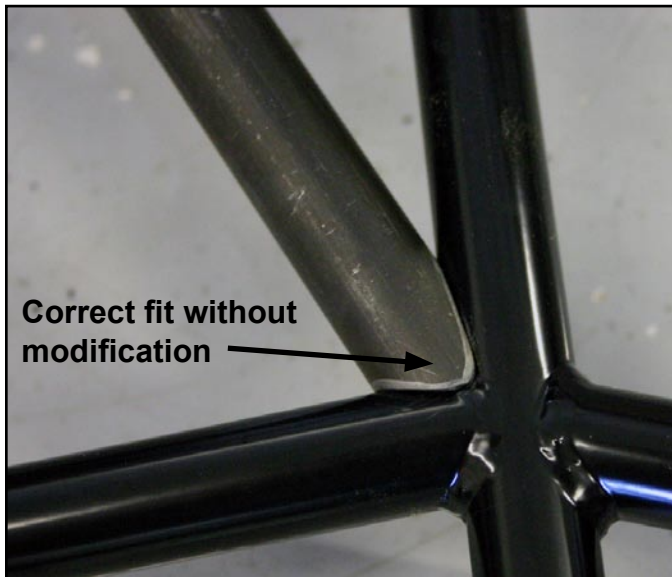
The tube provided by Sonex Aircraft LLC to accomplish Service Bulletin 007 is the same tube used in the production of new motormounts. As such, you will find it does not slip in to place on a completed mount and must be slightly modified.



This photo shows the correct placement of the tube.



This photo shows the end of the tube which interfaces with the triangular nose gear gusset. This end of the tube must be shortened until it fits in place against the triangular gusset and tube.



This photos shows how the provided tube interfaces with the existing cluster without modification.