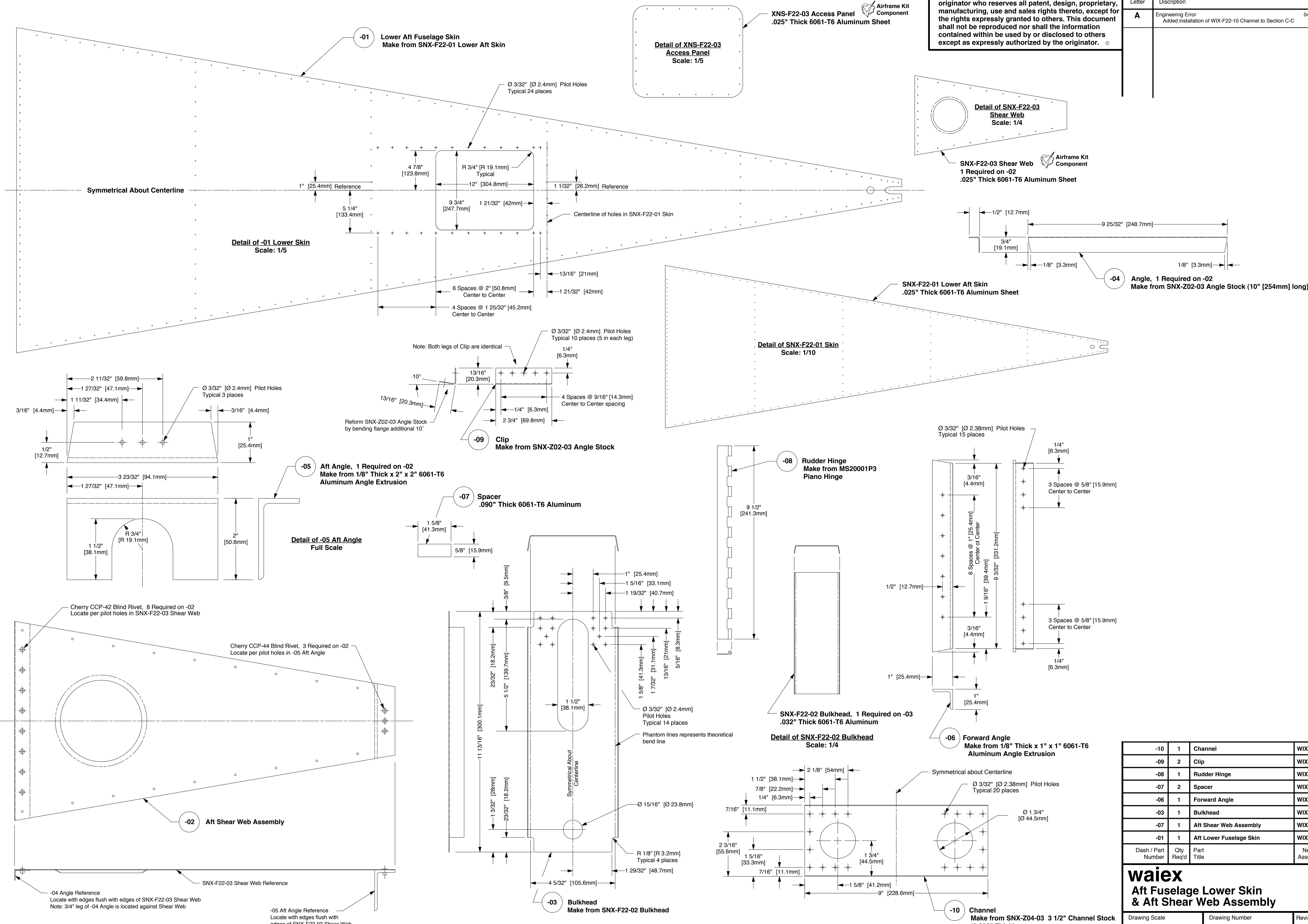


The information disclosed herein is the property of the originator who reserves all patent, design, proprietary, manufacturing, use and sales rights thereto, except for the rights expressly granted to others. This document shall not be reproduced nor shall the information contained within be used by or disclosed to others except as expressly authorized by the originator.

Revision Letter	Change Description	04/12/05
A	Engineering Error Added installation of WIX-F22-10 Channel to Section C-C	



-10	1	Channel	WIX-F21
-09	2	Clip	WIX-F21
-08	1	Rudder Hinge	WIX-F21
-07	2	Spacer	WIX-F21
-06	1	Forward Angle	WIX-F21
-03	1	Bulkhead	WIX-F21
-07	1	Aft Shear Web Assembly	WIX-F21
-01	1	Aft Lower Fuselage Skin	WIX-F21
Dash / Part Number	Qty Req'd	Part Title	Next Assembly

**waix**  
**Aft Fuselage Lower Skin & Aft Shear Web Assembly**

Drawing Scale	Drawing Number	Revision
1/2 & Noted	WIX-F22	A