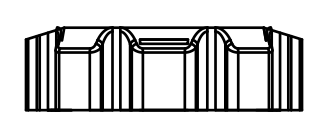
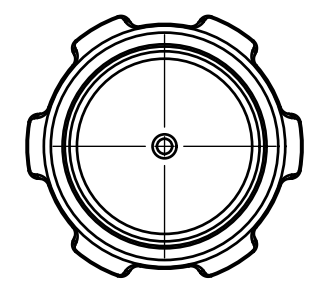
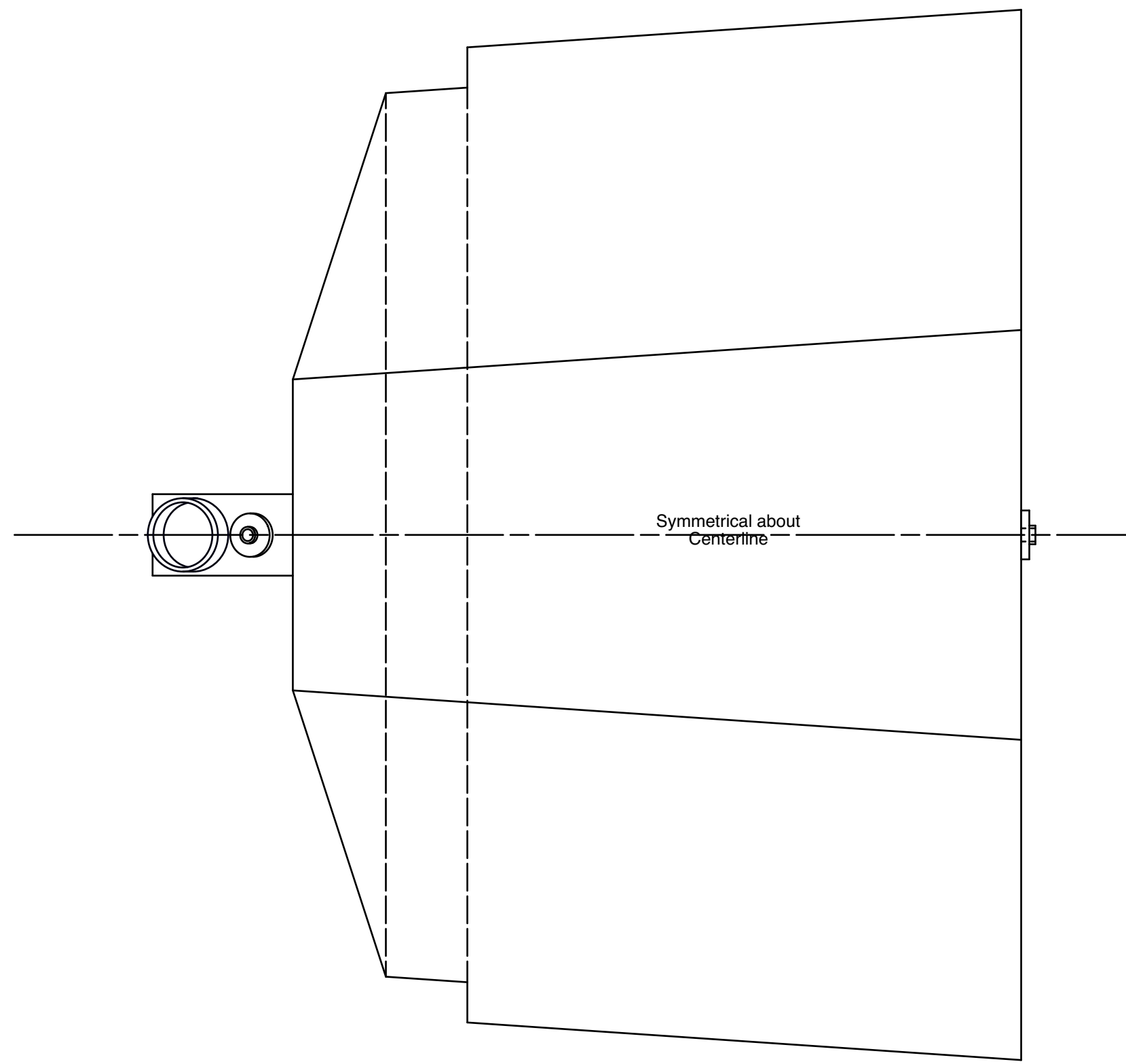


The information disclosed herein is the property of the originator who reserves all patent, design, proprietary, manufacturing, use and sales rights thereto, except for the rights expressly granted to others. This document shall not be reproduced nor shall the information contained within be used by or disclosed to others except as expressly authorized by the originator.

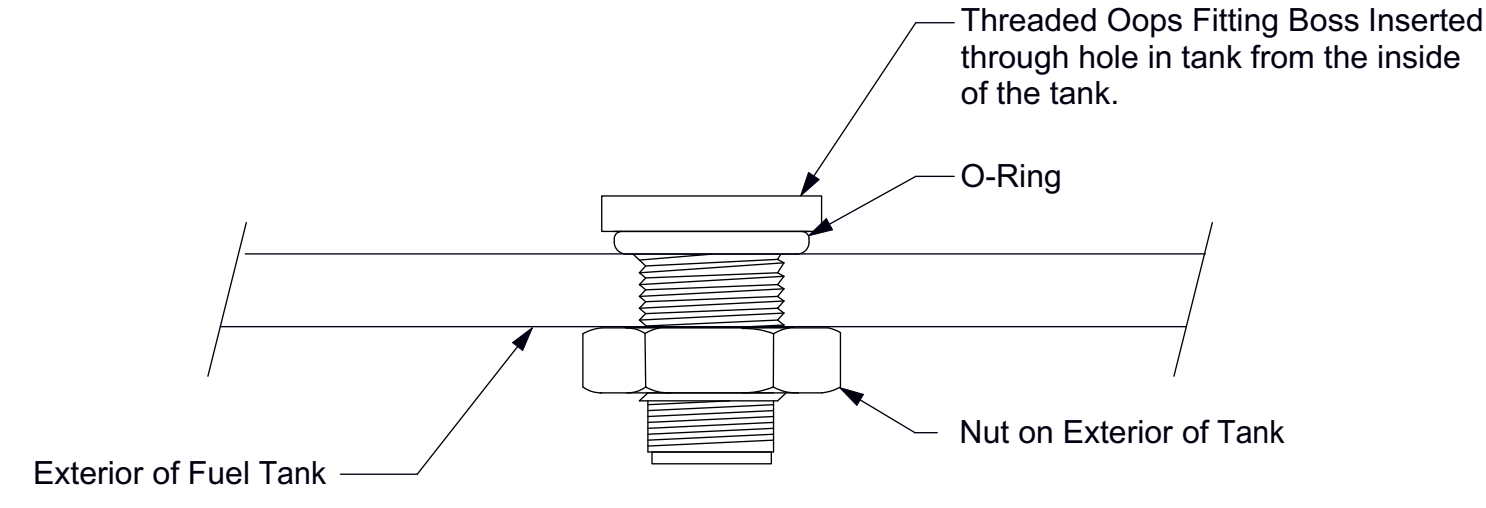
Revision Letter	Change Description
A	Deleted Details for scratch-building a fuel tank. Deleted Pre-molded NPT fittings. Added Ops Fitting Installation Details. Deleted SnapTite Fuel Cap Added Screw-on Fuel Cap Added Warning about Sloshing Compounds 10/02/15
B	<b>Detail A</b> Removed O-Ring from under the nut of the Ops fitting. 06/08/2023



**Threaded Fuel Cap**  
Replacement Part Number FC-202510

**IMPORTANT**  
Fuel Tank is manufactured from rotationally molded Polyethylene. **Do Not use "Sloshing" compounds or other sealants** inside the tank as they will not adhere and they will block your fuel system.

**Fuel Tank Capacity:**  
Standard Gear Aircraft (sitting 3 point): 16.8 U.S. Gallons (63.6 Liters)  
Tricycle Gear Aircraft (sitting level): 16.0 U.S. Gallons (60.6 Liters)  
Total Fuel Tank Volume: 17.2 U.S. Gallons (65.1 Liters)



**Detail A**  
**Ops Fitting Installation Detail**  
Typical for Both Sizes  
Scale 2:1

**Installing An Ops Fitting:**

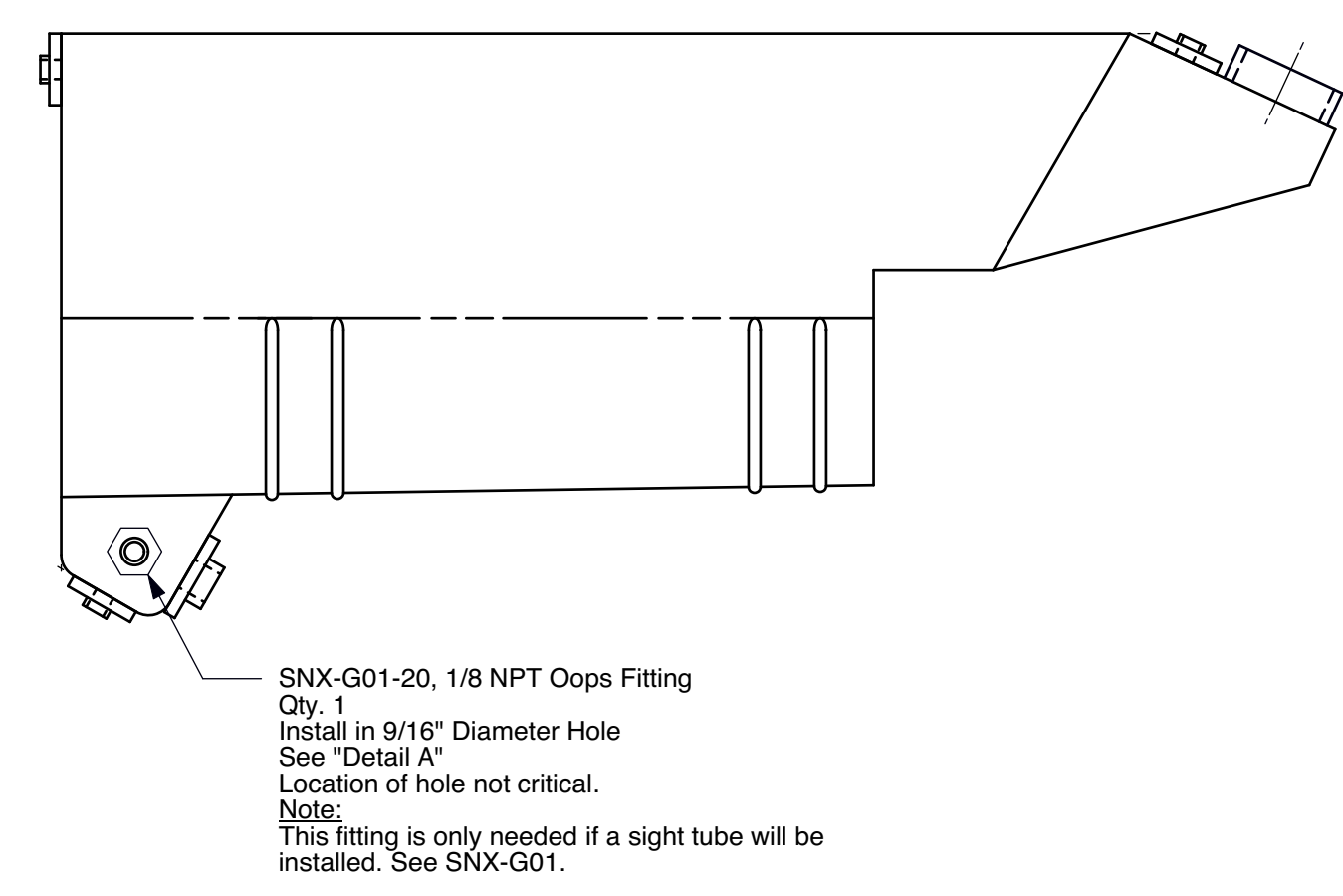
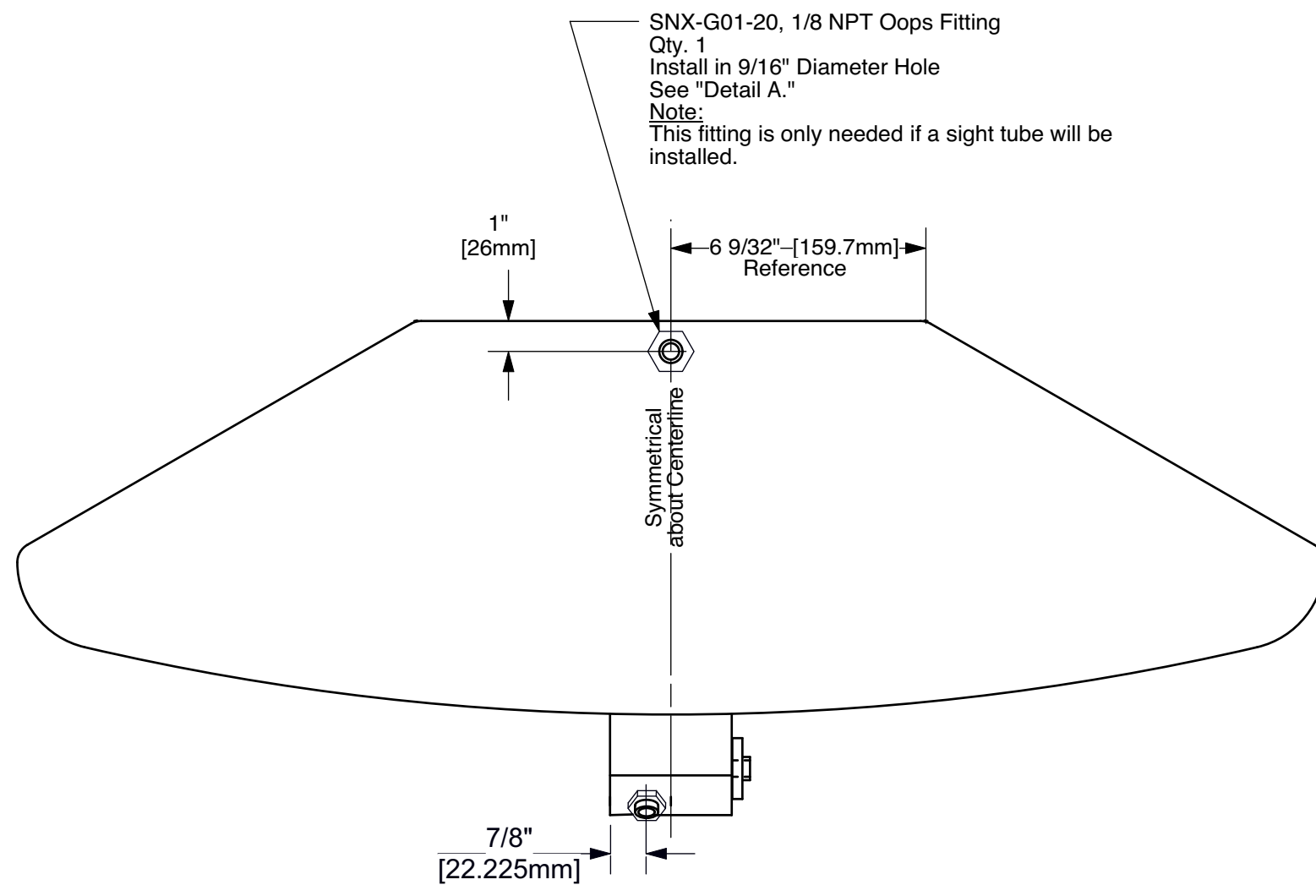
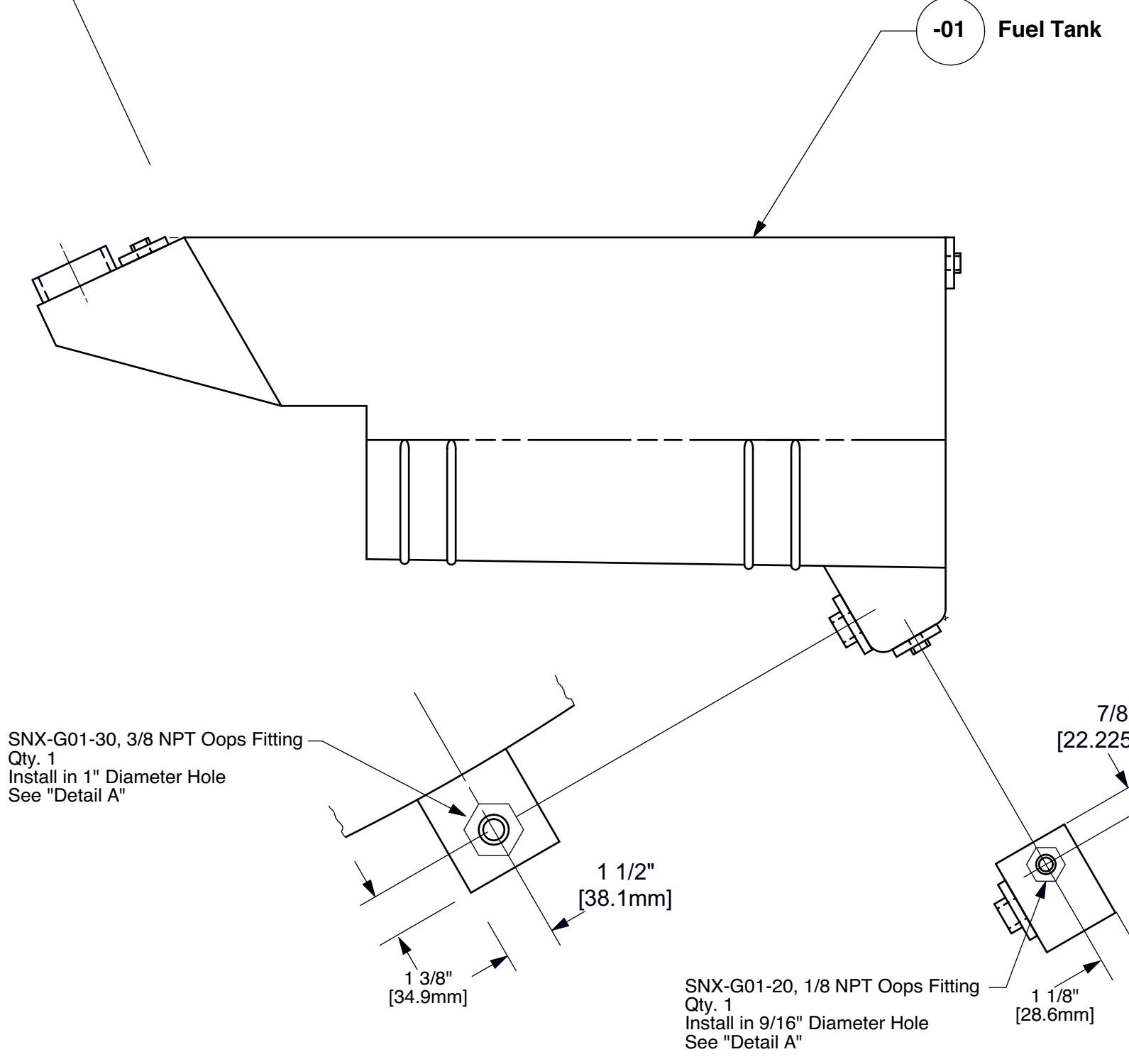
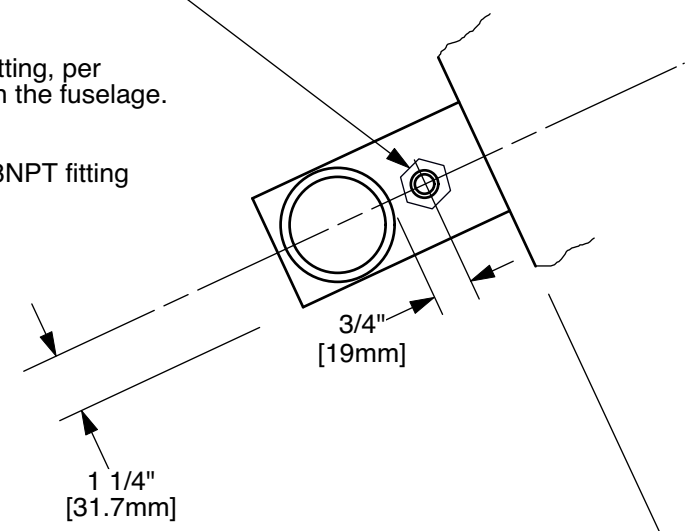
*Note: This is just one method which can be used to position an Ops fitting in the tank. Any tools or methods that accomplish the task are acceptable.*

1. Drill holes as required.
2. Use a sharp knife, sandpaper, and other tools as required to smooth both sides of each hole to create a smooth sealing surface.
3. Thoroughly clean the inside of the tank.
4. Guide a flexible wire (electrical wire, coat hanger, safety wire, etc.) through the hole in which you are installing a fitting and out the filler neck.
5. Place the Ops fitting (nut removed, and one o-ring installed) over the wire and let it slide through the tank to the hole.
6. Attach a 3/4" diameter washer to the end of the wire which extends from the filler neck and pull the wire/washer into the tank until the washer contacts the Ops fitting and "pushes" it through the hole.
7. Slide the Ops fitting's nut over the wire and onto the fitting. Tighten the lock nut by turning it counter-clockwise. Wrench flats on the end of the internal fitting allow it to be held with a wrench while the nut is tightened.
8. Remove the wire and washer from the tank.
9. Repeat steps 4 through 8 until all fittings are installed.
10. It is wise to test the fittings for leaks before installing the tank. If you use air pressure, do not apply more than 5 psi.

**Breather Port Options:**

**Option A:**  
1. Drill 9/16" hole in the fuel tank.  
2. Install SNX-G01-20, 1/8 NPT Ops Fitting, per "Detail A", AFTER installing the tank in the fuselage.

**Option B:**  
Drill and tap the tank wall to accept a 1/8NPT fitting directly, without using an Ops fitting.



Dash Number	Quantity Required	Part Title	Next Assembly
-01	1	Fuel Tank	

<b>sonex</b>		<b>Fuel Tank</b>	
Drawing Scale	Drawing Number	Revision	
1/4 & Noted	SNX-G02	B	